

UK Office

Everest Biotech Ltd

Cherwell Innovation Centre
77 Heyford Park
Upper Heyford
Oxfordshire
OX25 5HD
UK

Enquiries:

info@everestbiotech.com

Sales:

sales@everestbiotech.com

Tech support:

support@everestbiotech.com

Tel: +44 (0)1869 238326

www.everestbiotech.com

**Research Use Only. Not for
diagnostic or therapeutic use.**

EB10642 - Goat Anti-Creatine transporter 1 / SLC6A8 Antibody

Size: 100µg specific antibody in 200µl



Target Protein

Principal Names: SLC6A8, solute carrier family 6 (neurotransmitter transporter, creatine), member 8, CRT, CRTR, CT1, MGC87396, creatine transporter 1, creatine transporter SLC6A8, sodium- and chloride-dependent creatine transporter 1

Official Symbol: SLC6A8

Accession Number(s): NP_005620.1; NP_001136277.1; NP_001136278.1

Human GeneID(s): [6535](#)

Non-Human GeneID(s): 102857 (mouse), 50690 (rat)

Important Comments: This antibody is expected to recognize all reported isoforms (NP_005620.1; NP_001136277.1; NP_001136278.1).

Immunogen

Peptide with sequence ASLANLTCDQLADRR, from the internal region of the protein sequence according to NP_005620.1; NP_001136277.1; NP_001136278.1.

Please note the [peptide](#) is available for sale.

Purification and Storage

Purified from goat serum by ammonium sulphate precipitation followed by antigen affinity chromatography using the immunizing peptide.

Supplied at 0.5 mg/ml in Tris saline, 0.02% sodium azide, pH7.3 with 0.5% bovine serum albumin.

Aliquot and store at -20°C. Minimize freezing and thawing.

Applications Tested

Peptide ELISA: antibody detection limit dilution 1:8000.

Western blot: Approx 70kDa band observed in Mouse Heart lysates (calculated MW of 71.0kDa according to Mouse NP_598748.1). Recommended concentration: 0.1-0.3µg/ml. Primary incubation was 1 hour.

IHC: Paraffin embedded Human Kidney. Recommended concentration: 5µg/ml.

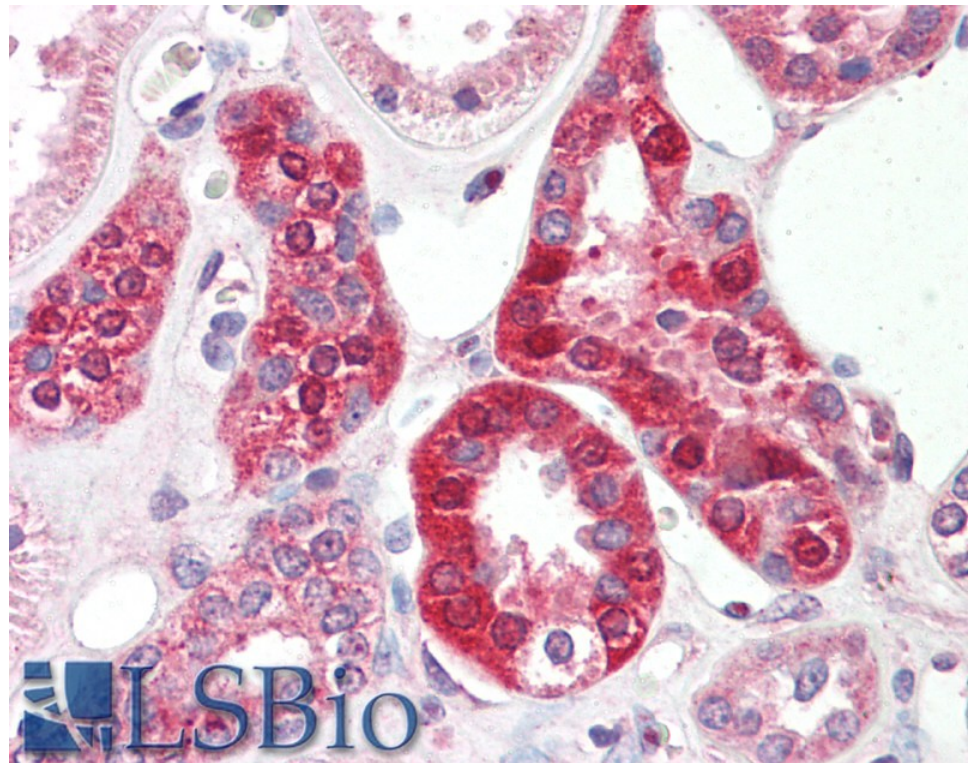
Species Reactivity

Tested: Mouse, Human

Expected from sequence similarity: Human, Mouse, Rat, Dog, Pig, Cow



EB10642 (0.1 μ g/ml) staining of Mouse Heart lysate (35 μ g protein in RIPA buffer). Detected by chemiluminescence.



EB10642 (5 μ g/ml) staining of paraffin embedded Human Kidney. Steamed antigen retrieval with citrate buffer pH 6, AP-staining.