

## UK Office

### Everest Biotech Ltd

Cherwell Innovation Centre  
77 Heyford Park  
Upper Heyford  
Oxfordshire  
OX25 5HD  
UK

Enquiries:

[info@everestbiotech.com](mailto:info@everestbiotech.com)

Sales:

[sales@everestbiotech.com](mailto:sales@everestbiotech.com)

Tech support:

[support@everestbiotech.com](mailto:support@everestbiotech.com)

Tel: +44 (0)1869 238326

Fax: +44 (0)1869 238327

## US Office

### Everest Biotech c/o Abcore

405 Maple Street, Suite A106  
Ramona,  
CA 92065  
USA

Inquiries:

[info@everestbiotech.com](mailto:info@everestbiotech.com)

Sales:

[usasales@everestbiotech.com](mailto:usasales@everestbiotech.com)

Tech support:

[support@everestbiotech.com](mailto:support@everestbiotech.com)

Tel: 888-320-4628 (toll-free)

Fax: 888-841-9041

[www.everestbiotech.com](http://www.everestbiotech.com)

**Research Use Only. Not for  
diagnostic or therapeutic use.**

## EB12171 - Goat Anti-CREB1 (aa96-109) Antibody

Size: 100µg specific antibody in 200µl



### Target Protein

**Principal Names:** CREB1, cAMP responsive element binding protein 1, CREB, CREB-1, active transcription factor CREB, cAMP-response element-binding protein-1, cAMP-responsive element-binding protein 1, cyclic AMP-responsive element-binding protein 1, transactivator protein

**Official Symbol:** CREB1

**Accession Number(s):** NP\_004370.1; NP\_604391.1

**Human GeneID(s):** [1385](#)

**Non-Human GeneID(s):** 12912 (mouse)

**Important Comments:** This antibody is expected to recognize both reported isoforms (NP\_004370.1; NP\_604391.1).

### Immunogen

Peptide with sequence C-DSQESVDSVTDSQK, from the internal region of the protein sequence according to NP\_004370.1; NP\_604391.1.

Please note the [peptide](#) is available for sale.

### Purification and Storage

Purified from goat serum by ammonium sulphate precipitation followed by antigen affinity chromatography using the immunizing peptide.

Supplied at 0.5 mg/ml in Tris saline, 0.02% sodium azide, pH7.3 with 0.5% bovine serum albumin.

Aliquot and store at -20°C. Minimize freezing and thawing.

### Applications Tested

**Peptide ELISA:** antibody detection limit dilution 1:128000.

**Western blot:** Approx 45kDa band observed in nuclear lysates of cell lines Jurkat and NIH3T3 (calculated MW of 36.7kDa according to NP\_604391.1). This molecular weight is routinely observed by other sources. Recommended concentration: 0.1-0.3µg/ml. Primary incubation was 1 hour.

**IHC:** Paraffin embedded Human Prostate. Recommended concentration: 2.5µg/ml.

**Additional validation:** This antibody has been successfully used in the following paper: Sikorski et al. (2018) PMID: 30377371.

### Species Reactivity

**Tested:** Human, Mouse

**Expected from sequence similarity:** Human, Mouse, Dog, Pig, Cow

### Specific Reference

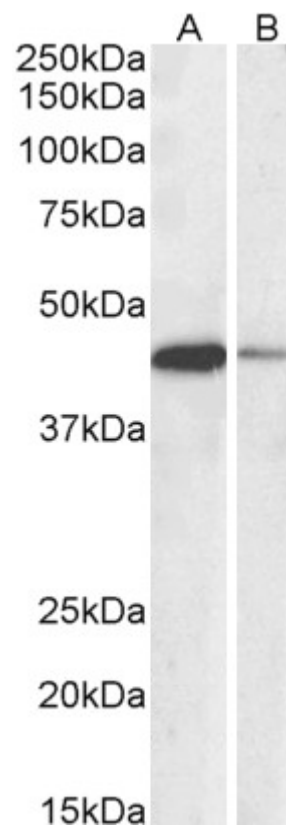
**This antibody has been successfully used in the following paper:**

Krzysztof Sikorski, Adi Mehta, Marit Inngjerdingen, Flourina Thakor, Simon Kling, Tomas Kalina, Tuula A. Nyman, Maria Ekman Stensland, Wei Zhou, Gustavo A. De Souza, Lars Holden, Jan Stuchly, Markus Templin and Fridtjof Lund-Johansen

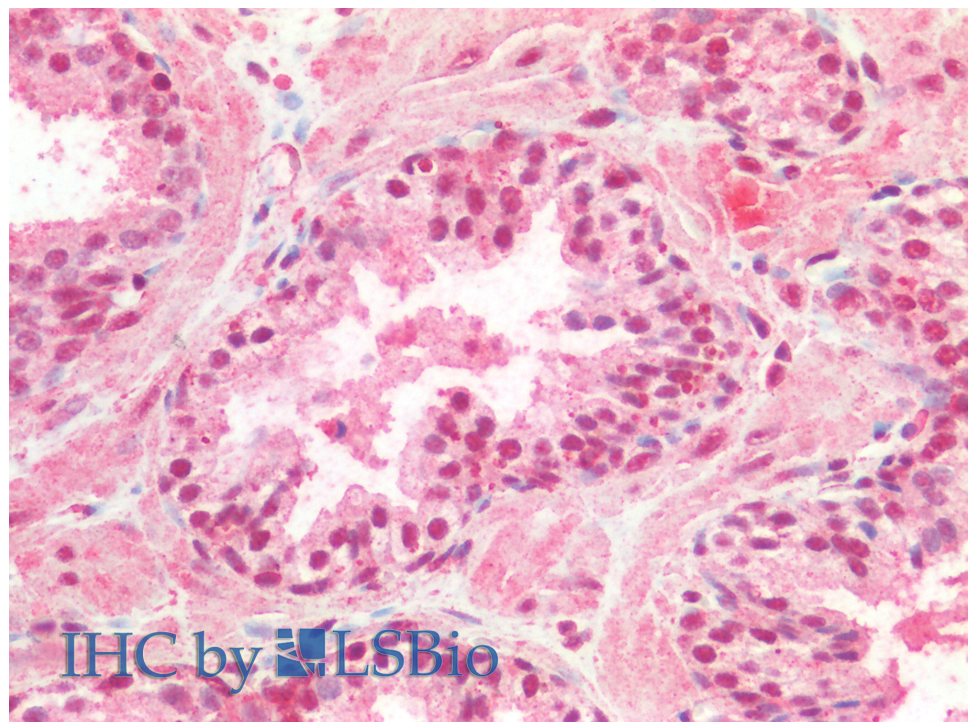
A high-throughput pipeline for validation of antibodies

Nat Methods. 2018 Nov;15(11):909-912

PMID: 30377371



EB12171 (0.1µg/ml) staining of Jurkat (A) and NIH3T3 (B) nuclear lysates (35µg protein in RIPA buffer).  
Detected by chemiluminescence.



EB12171 (2.5µg/ml) staining of paraffin embedded Human Prostate. Steamed antigen retrieval with citrate buffer pH 6, AP-staining.