

## UK Office

### Everest Biotech Ltd

Cherwell Innovation Centre  
77 Heyford Park  
Upper Heyford  
Oxfordshire  
OX25 5HD  
UK

Enquiries:

[info@everestbiotech.com](mailto:info@everestbiotech.com)

Sales:

[sales@everestbiotech.com](mailto:sales@everestbiotech.com)

Tech support:

[support@everestbiotech.com](mailto:support@everestbiotech.com)

Tel: +44 (0)1869 238326

[www.everestbiotech.com](http://www.everestbiotech.com)

**Research Use Only. Not for  
diagnostic or therapeutic use.**

## EB12174 - Goat Anti-CREB3L2 Antibody

Size: 100µg specific antibody in 200µl



### Target Protein

**Principal Names:** CREB3L2, cAMP responsive element binding protein 3-like 2, BBF2H7, B-ZIB transcription factor, BBF2 human homolog on chromosome 7, FUS/BBF2H7 protein, TCAG\_1951439, basic transcription factor 2, cAMP-responsive element-binding protein 3-like protein 2, cyclic AMP-responsive element-binding protein 3-like protein 2

**Official Symbol:** CREB3L2

**Accession Number(s):** NP\_919047.2; NP\_001240704.1

**Human GeneID(s):** [64764](#)

**Important Comments:** This antibody is expected to recognize both reported isoforms (NP\_919047.2; NP\_001240704.1).

### Immunogen

Peptide with sequence DRKLSELPDGE-C, from the N Terminus of the protein sequence according to NP\_919047.2; NP\_001240704.1.

Please note the [peptide](#) is available for sale.

### Purification and Storage

Purified from goat serum by ammonium sulphate precipitation followed by antigen affinity chromatography using the immunizing peptide.

Supplied at 0.5 mg/ml in Tris saline, 0.02% sodium azide, pH7.3 with 0.5% bovine serum albumin.

Aliquot and store at -20°C. Minimize freezing and thawing.

### Applications Tested

**Peptide ELISA:** antibody detection limit dilution 1:128000.

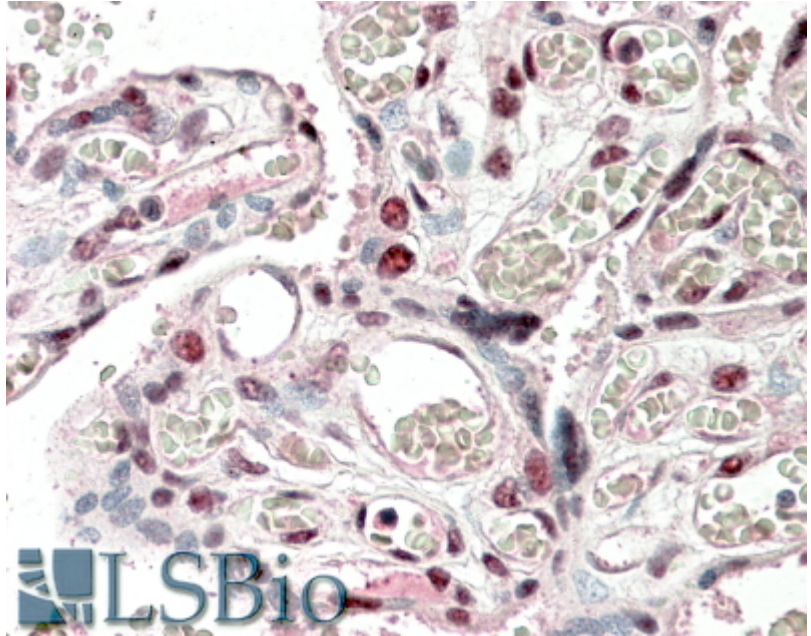
**Western blot:** Approx 26kDa band observed in Human Placenta lysates (calculated MW of 27.7kDa according to NP\_001240704.1). Recommended concentration: 1-3µg/ml.

**IHC:** In paraffin embedded Human Placenta shows staining in select nuclei. Recommended concentration, 5-10µg/ml.

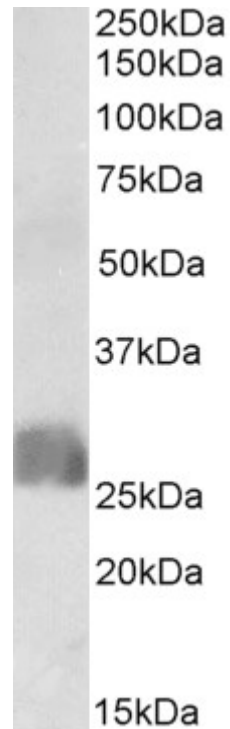
### Species Reactivity

**Tested:** Human

**Expected from sequence similarity:** Human



EB12174 (5µg/ml) staining of paraffin embedded Human Placenta. Steamed antigen retrieval with citrate buffer pH 6, AP-staining.



EB12174 (1µg/ml) staining of Human Placenta lysate (35µg protein in RIPA buffer). Primary incubation was 1 hour. Detected by chemiluminescence.