



UK Office

Everest Biotech Ltd

Cherwell Innovation Centre
77 Heyford Park
Upper Heyford
Oxfordshire
OX25 5HD
UK

Enquiries:

info@everestbiotech.com

Sales:

sales@everestbiotech.com

Tech support:

support@everestbiotech.com

Tel: +44 (0)1869 238326

Fax: +44 (0)1869 238327

US Office

Everest Biotech c/o Abcore

405 Maple Street, Suite A106
Ramona,
CA 92065
USA

Inquiries:

info@everestbiotech.com

Sales:

usasales@everestbiotech.com

Tech support:

support@everestbiotech.com

Tel: 888-320-4628 (toll-free)

Fax: 888-841-9041

www.everestbiotech.com

**Research Use Only. Not for
diagnostic or therapeutic use.**

EB12174 - Goat Anti-CREB3L2 Antibody

Size: 100µg specific antibody in 200µl



Target Protein

Principal Names: CREB3L2, cAMP responsive element binding protein 3-like 2, BBF2H7, B-ZIB transcription factor, BBF2 human homolog on chromosome 7, FUS/BBF2H7 protein, TCAG_1951439, basic transcription factor 2, cAMP-responsive element-binding protein 3-like protein 2, cyclic AMP-responsive element-binding protein 3-like protein 2

Official Symbol: CREB3L2

Accession Number(s): NP_919047.2; NP_001240704.1

Human GeneID(s): [64764](#)

Important Comments: This antibody is expected to recognize both reported isoforms (NP_919047.2; NP_001240704.1).

Immunogen

Peptide with sequence DRKLSELPDGE-C, from the N Terminus of the protein sequence according to NP_919047.2; NP_001240704.1.

Please note the [peptide](#) is available for sale.

Purification and Storage

Purified from goat serum by ammonium sulphate precipitation followed by antigen affinity chromatography using the immunizing peptide.

Supplied at 0.5 mg/ml in Tris saline, 0.02% sodium azide, pH7.3 with 0.5% bovine serum albumin.

Aliquot and store at -20°C. Minimize freezing and thawing.

Applications Tested

Peptide ELISA: antibody detection limit dilution 1:128000.

Western blot: Approx 26kDa band observed in Human Placenta lysates (calculated MW of 27.7kDa according to NP_001240704.1). Recommended concentration: 1-3µg/ml.

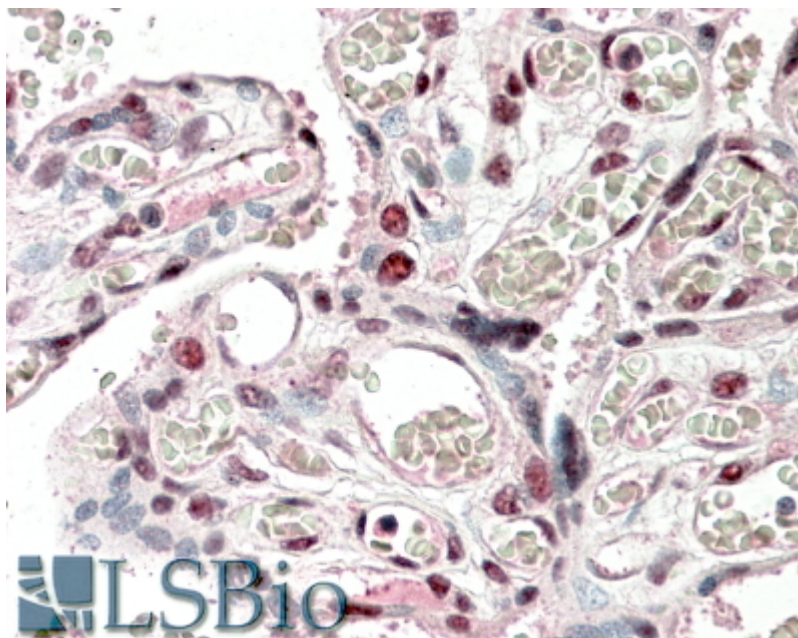
IHC: In paraffin embedded Human Placenta shows staining in select nuclei.

Recommended concentration, 5-10µg/ml.

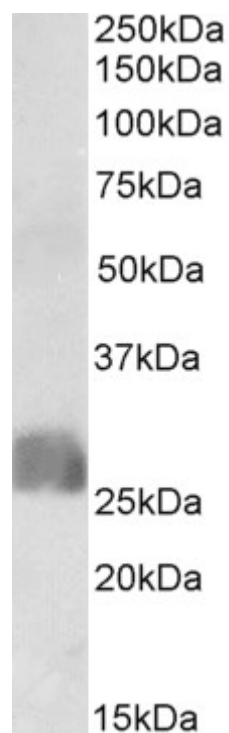
Species Reactivity

Tested: Human

Expected from sequence similarity: Human



EB12174 (5µg/ml) staining of paraffin embedded Human Placenta. Steamed antigen retrieval with citrate buffer pH 6, AP-staining.



EB12174 (1µg/ml) staining of Human Placenta lysate (35µg protein in RIPA buffer). Primary incubation was 1 hour. Detected by chemiluminescence.