



UK Office

Everest Biotech Ltd

Cherwell Innovation Centre
77 Heyford Park
Upper Heyford
Oxfordshire
OX25 5HD
UK

Enquiries:

info@everestbiotech.com

Sales:

sales@everestbiotech.com

Tech support:

support@everestbiotech.com

Tel: +44 (0)1869 238326

Fax: +44 (0)1869 238327

US Office

Everest Biotech c/o Abcore

405 Maple Street, Suite A106
Ramona,
CA 92065
USA

Inquiries:

info@everestbiotech.com

Sales:

usasales@everestbiotech.com

Tech support:

support@everestbiotech.com

Tel: 888-320-4628 (toll-free)

Fax: 888-841-9041

www.everestbiotech.com

**Research Use Only. Not for
diagnostic or therapeutic use.**

EB09778 - Goat Anti-CREB3L2 / BBF2H7 Antibody

Size: 100µg specific antibody in 200µl



Target Protein

Principal Names: basic transcription factor 2, BBF2H7, B-ZIB transcription factor, cAMP responsive element binding protein 3-like 2, FUS/BBF2H7 protein, MGC131709, MGC71006, TCAG_1951439, CREB3L2

Official Symbol: CREB3L2

Accession Number(s): NP_919047.2

Human GeneID(s): [64764](#)

Non-Human GeneID(s): 208647 (mouse), 362339 (rat)

Immunogen

Peptide with sequence C-HSLQEPYTASVVR, from the internal region of the protein sequence according to NP_919047.2.

Please note the [peptide](#) is available for sale.

Purification and Storage

Purified from goat serum by ammonium sulphate precipitation followed by antigen affinity chromatography using the immunizing peptide.

Supplied at 0.5 mg/ml in Tris saline, 0.02% sodium azide, pH7.3 with 0.5% bovine serum albumin.

Aliquot and store at -20°C. Minimize freezing and thawing.

Applications Tested

Peptide ELISA: antibody detection limit dilution 1:16000.

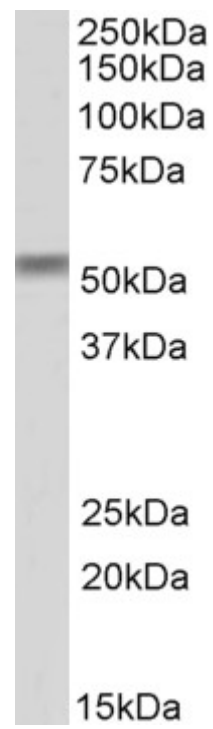
Western blot: Approx 55kDa band observed in Mouse and Rat Testis lysates (calculated MW of 57.4kDa according to Mouse NP_848776.2 and Rat NP_001012188.1).

Recommended concentration: 1-3µg/ml.

Species Reactivity

Tested: Mouse, Rat

Expected from sequence similarity: Human, Mouse, Rat, Dog, Cow



EB09778 (1µg/ml) staining of Rat Testis lysate (35µg protein in RIPA buffer). Primary incubation was 1 hour.
Detected by chemiluminescence.