



## UK Office

### Everest Biotech Ltd

Cherwell Innovation Centre  
77 Heyford Park  
Upper Heyford  
Oxfordshire  
OX25 5HD  
UK

Enquiries:

[info@everestbiotech.com](mailto:info@everestbiotech.com)

Sales:

[sales@everestbiotech.com](mailto:sales@everestbiotech.com)

Tech support:

[support@everestbiotech.com](mailto:support@everestbiotech.com)

Tel: +44 (0)1869 238326

Fax: +44 (0)1869 238327

## US Office

### Everest Biotech c/o Abcore

405 Maple Street, Suite A106  
Ramona,  
CA 92065  
USA

Inquiries:

[info@everestbiotech.com](mailto:info@everestbiotech.com)

Sales:

[usasales@everestbiotech.com](mailto:usasales@everestbiotech.com)

Tech support:

[support@everestbiotech.com](mailto:support@everestbiotech.com)

Tel: 888-320-4628 (toll-free)

Fax: 888-841-9041

[www.everestbiotech.com](http://www.everestbiotech.com)

**Research Use Only. Not for  
diagnostic or therapeutic use.**

## EB09884 - Goat Anti-Cryopirin / NALP3 / NLRP3 Antibody

Size: 100µg specific antibody in 200µl



### Target Protein

**Principal Names:** AGTAVPRL, AII, AII/AVP, AII/AVP receptor-like, AVP, C1orf7, CIAS1, CLR1.1, FCAS, FCU, FLJ95925, MWS, NACHT domain-, leucine-rich repeat-, and PYD-containing protein 3, NACHT, LRR and PYD contain, NALP3, NLR family, pyrin domain containing 3, NLRP3

**Official Symbol:** NLRP3

**Accession Number(s):** NP\_004886.3; NP\_899632.1; NP\_001120933.1;  
NP\_001120934.1

**Human GenelD(s):** [114548](#)

**Important Comments:** This antibody is expected to recognize all reported isoforms (NP\_004886.3; NP\_899632.1; NP\_001120933.1; NP\_001120934.1). Reported variants NP\_001073289.1 and NP\_004886.3 represent identical protein.

### Immunogen

Peptide with sequence RDLYEKAKRDEPK-C, from the N-Terminus (near) of the protein sequence according to NP\_004886.3; NP\_899632.1; NP\_001120933.1; NP\_001120934.1.

Please note the [peptide](#) is available for sale.

### Purification and Storage

Purified from goat serum by ammonium sulphate precipitation followed by antigen affinity chromatography using the immunizing peptide.

Supplied at 0.5 mg/ml in Tris saline, 0.02% sodium azide, pH7.3 with 0.5% bovine serum albumin.

Aliquot and store at -20°C. Minimize freezing and thawing.

### Applications Tested

**Peptide ELISA:** antibody detection limit dilution 1:32000.

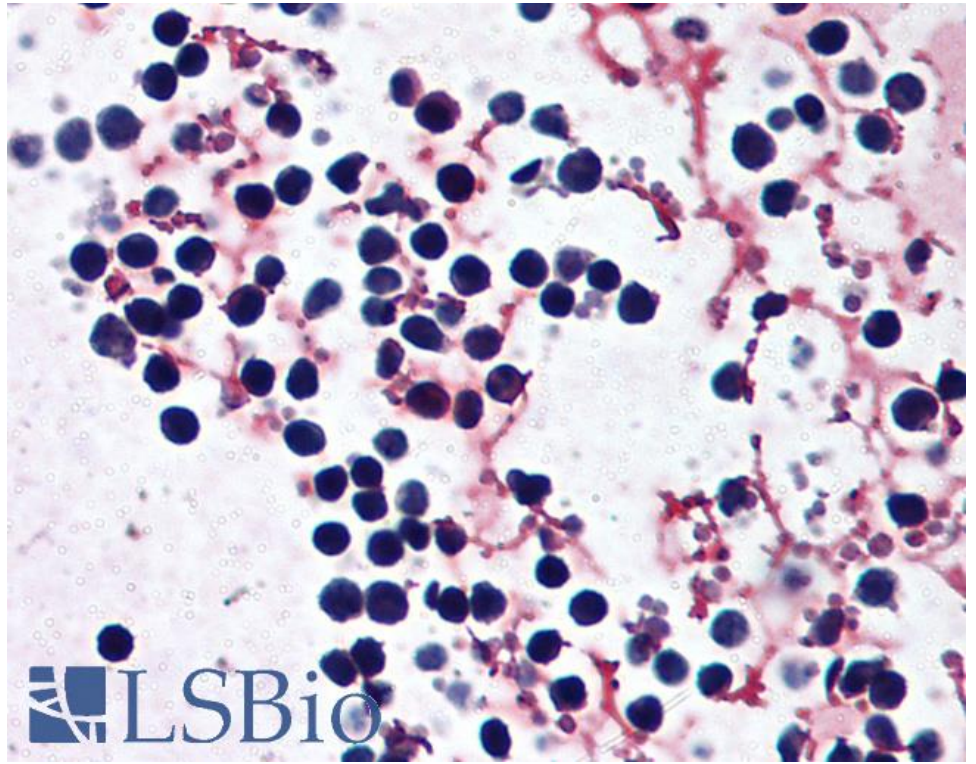
**Western blot:** Preliminary experiments gave an approx 36kDa band in Human Peripheral Blood Mononucleocytes lysates and in lysates of cell line MOLT4, after 0.3-1µg/ml antibody staining. Please note that currently we cannot find an explanation in the literature for the band we observe given the smallest calculated size of 106kDa according to NP\_899632.1. The 36kDa band was successfully blocked by incubation with the immunizing peptide.

**IHC:** Paraffin embedded Human peripheral blood leukocytes. Recommended concentration: 5µg/ml.

### Species Reactivity

**Tested:** Human

**Expected from sequence similarity:** Human



EB09884 (5µg/ml) staining of paraffin embedded Human peripheral blood leukocytes. Steamed antigen retrieval with citrate buffer pH 6, AP-staining.