



UK Office

Everest Biotech Ltd

Cherwell Innovation Centre
77 Heyford Park
Upper Heyford
Oxfordshire
OX25 5HD
UK

Enquiries:

info@everestbiotech.com

Sales:

sales@everestbiotech.com

Tech support:

support@everestbiotech.com

Tel: +44 (0)1869 238326

www.everestbiotech.com

**Research Use Only. Not for
diagnostic or therapeutic use.**

EB10257 - Goat Anti-CSF1R (aa 700-710) Antibody

Size: 100µg specific antibody in 200µl



Target Protein

Principal Names: CD115, CD115 antigen, C-FMS, colony stimulating factor 1 receptor, CSFR, FIM2, FMS, FMS proto-oncogene, macrophage colony stimulating factor I receptor, McDonough feline sarcoma viral (v-fms) oncogene homolog, CSF1R

Official Symbol: CSF1R

Accession Number(s): NP_005202.2

Human GeneID(s): [1436](#)

Non-Human GeneID(s): 12978 (mouse), 307403 (rat)

Immunogen

Peptide with sequence C-KNIHLEKKYVR, from the internal region of the protein sequence according to NP_005202.2.

Please note the [peptide](#) is available for sale.

Purification and Storage

Purified from goat serum by ammonium sulphate precipitation followed by antigen affinity chromatography using the immunizing peptide.

Supplied at 0.5 mg/ml in Tris saline, 0.02% sodium azide, pH7.3 with 0.5% bovine serum albumin.

Aliquot and store at -20°C. Minimize freezing and thawing.

Applications Tested

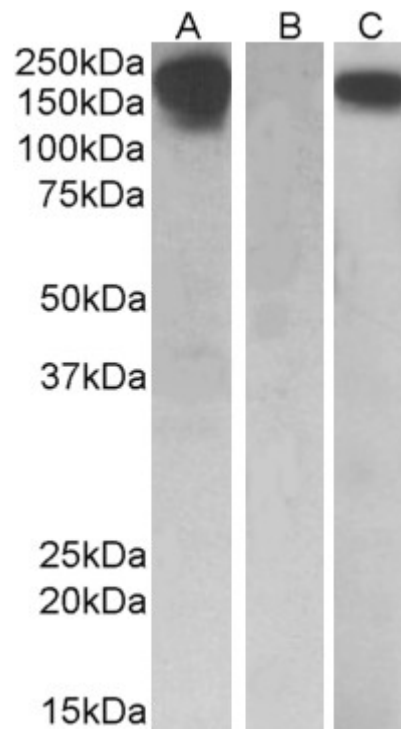
Peptide ELISA: antibody detection limit dilution 1:32000.

Western blot: In transfected HEK293 transiently expressing full-length Human CSF1R (myc and DYKDDDDK tagged), a band of approx. 200kDa was observed. No bands were observed in mock-transfected HEK293 and the same band was observed using anti-myc tag antibody. Recommended concentration, 0.1-0.5µg/ml.

Species Reactivity

Tested: Human

Expected from sequence similarity: Human, Mouse, Rat, Dog, Cow



HEK293 lysate (10ug protein in RIPA buffer) overexpressing Human CSF1R with C-terminal MYC tag probed with EB10257 (0.5ug/ml) in Lane A and probed with anti-MYC Tag (1/1000) in lane C. Mock-transfected HEK293 probed with EB10257 (1mg/ml) in Lane B. Primary incubations were for 1 hour. Detected by chemiluminescence.