



## UK Office

### Everest Biotech Ltd

Cherwell Innovation Centre  
77 Heyford Park  
Upper Heyford  
Oxfordshire  
OX25 5HD  
UK

Enquiries:

[info@everestbiotech.com](mailto:info@everestbiotech.com)

Sales:

[sales@everestbiotech.com](mailto:sales@everestbiotech.com)

Tech support:

[support@everestbiotech.com](mailto:support@everestbiotech.com)

Tel: +44 (0)1869 238326

[www.everestbiotech.com](http://www.everestbiotech.com)

**Research Use Only. Not for  
diagnostic or therapeutic use.**

## EB10070 - Goat Anti-CSTF3 Antibody

Size: 100µg specific antibody in 200µl



### Target Protein

**Principal Names:** cleavage stimulation factor subunit 3, cleavage stimulation factor subunit 3, isoform 1, cleavage stimulation factor, 3' pre-RNA, subunit 3, 77kDa, CSTF 77 kDa subunit, CSTF-77, MGC117398, MGC43001, MGC75122, CSTF3

**Official Symbol:** CSTF3

**Accession Number(s):** NP\_001317.1

**Human GeneID(s):** [1479](#)

**Non-Human GeneID(s):** 228410 (mouse), 362178 (rat)

**Important Comments:** This antibody is expected to recognize isoform 1 (NP\_001317.1) only.

### Immunogen

Peptide with sequence C-RETKGKLPSYKE, from the internal region of the protein sequence according to NP\_001317.1.

Please note the [peptide](#) is available for sale.

### Purification and Storage

Purified from goat serum by ammonium sulphate precipitation followed by antigen affinity chromatography using the immunizing peptide.

Supplied at 0.5 mg/ml in Tris saline, 0.02% sodium azide, pH7.3 with 0.5% bovine serum albumin.

Aliquot and store at -20°C. Minimize freezing and thawing.

### Applications Tested

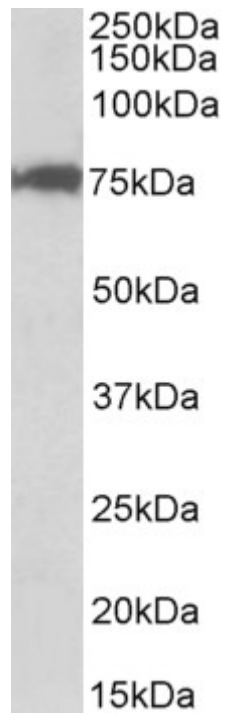
**Peptide ELISA:** antibody detection limit dilution 1:128000.

**Western blot:** Approx 75kDa band observed in nuclear lysates of cell line HeLa (calculated MW of 82.9kDa according to NP\_001317.1). The observed molecular weight corresponds to the expected size of 77kDa. Recommended concentration: 0.03-0.1µg/ml.

### Species Reactivity

**Tested:** Human

**Expected from sequence similarity:** Human, Mouse, Rat, Dog



EB10070 (0.1 $\mu$ g/ml) staining of nuclear HeLa lysate (35 $\mu$ g protein in RIPA buffer). Primary incubation was 1 hour. Detected by chemiluminescence.