

UK Office

Everest Biotech Ltd

Cherwell Innovation Centre
77 Heyford Park
Upper Heyford
Oxfordshire
OX25 5HD
UK

Enquiries:

info@everestbiotech.com

Sales:

sales@everestbiotech.com

Tech support:

support@everestbiotech.com

Tel: +44 (0)1869 238326

Fax: +44 (0)1869 238327

US Office

Everest Biotech c/o Abcore

405 Maple Street, Suite A106
Ramona,
CA 92065
USA

Inquiries:

info@everestbiotech.com

Sales:

usasales@everestbiotech.com

Tech support:

support@everestbiotech.com

Tel: 888-320-4628 (toll-free)

Fax: 888-841-9041

www.everestbiotech.com

**Research Use Only. Not for
diagnostic or therapeutic use.**

Target Protein

Principal Names: NKX2-5, NK2 transcription factor related, locus 5 (Drosophila), CHNG5, CSX, CSX1, NKX2.5, NKX2E, NKX4-1, NK2 transcription factor homolog E, NK2 transcription factor related, locus 5, cardiac-specific homeo box, tinman paralog

Official Symbol: NKX2-5

Accession Number(s): NP_004378.1; NP_001159647.1; NP_001159648.1

Human GeneID(s): [1482](#)

Non-Human GeneID(s): 18091 (mouse), 114109 (rat)

Important Comments: This antibody is expected to recognize all three reported isoforms (NP_004378.1; NP_001159647.1; NP_001159648.1).

Immunogen

Peptide with sequence C-PRAYSDPDPKDKPR, from the internal region of the protein sequence according to NP_004378.1; NP_001159647.1; NP_001159648.1.

Please note the [peptide](#) is available for sale.

Purification and Storage

Purified from goat serum by ammonium sulphate precipitation followed by antigen affinity chromatography using the immunizing peptide.

Supplied at 0.5 mg/ml in Tris saline, 0.02% sodium azide, pH7.3 with 0.5% bovine serum albumin.

Aliquot and store at -20°C. Minimize freezing and thawing.

Applications Tested

Peptide ELISA: antibody detection limit dilution 1:32000.

Western blot: Approx 45kDa band observed in Human Heart lysates (calculated MW of 34.9kDa according to NP_004378.1). The observed molecular weight corresponds to earlier findings in literature with different antibodies (Shiojima et al, Circ Res. 1996 Nov;79(5):920-9.; PMID: 8888684). Recommended concentration: 0.3-1µg/ml. Primary incubation was 1 hour. Preliminary testing was unsuccessful on Mouse, Rat and Pig Heart for this particular batch.

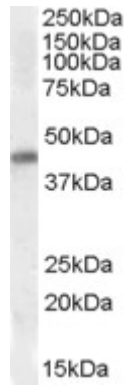
IHC: Paraffin embedded Human Heart. Recommended concentration: 3.75µg/ml.

Immunofluorescence: Strong expression of the protein seen in the nucleus and cytoplasm of U2OS cells. Recommended concentration: 5µg/ml.

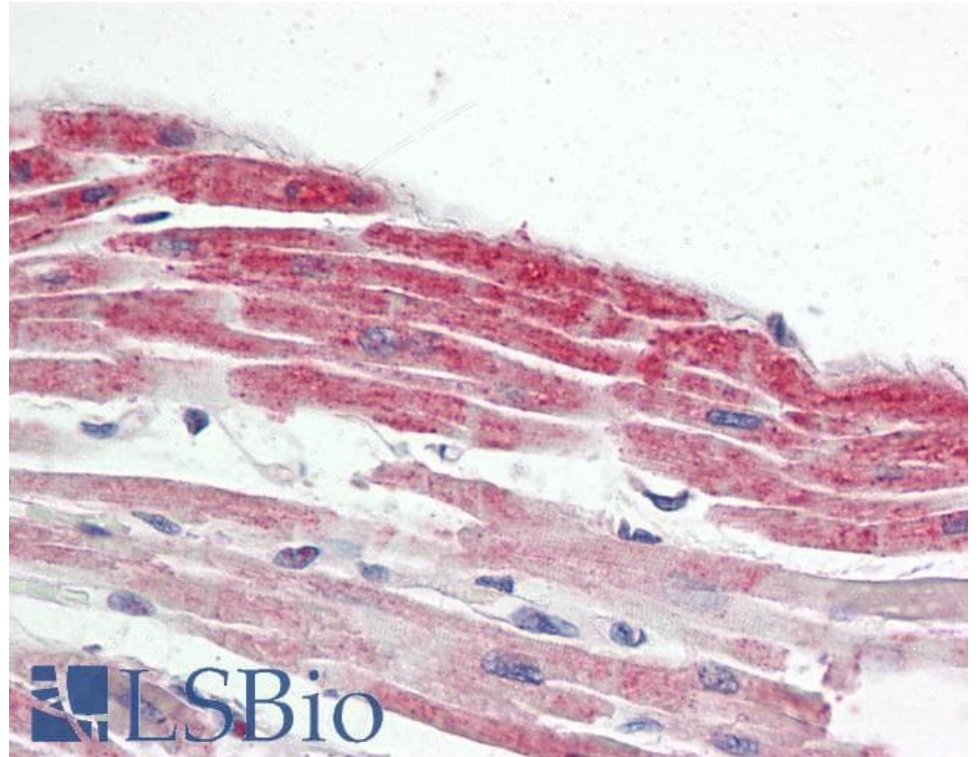
Species Reactivity

Tested: Human

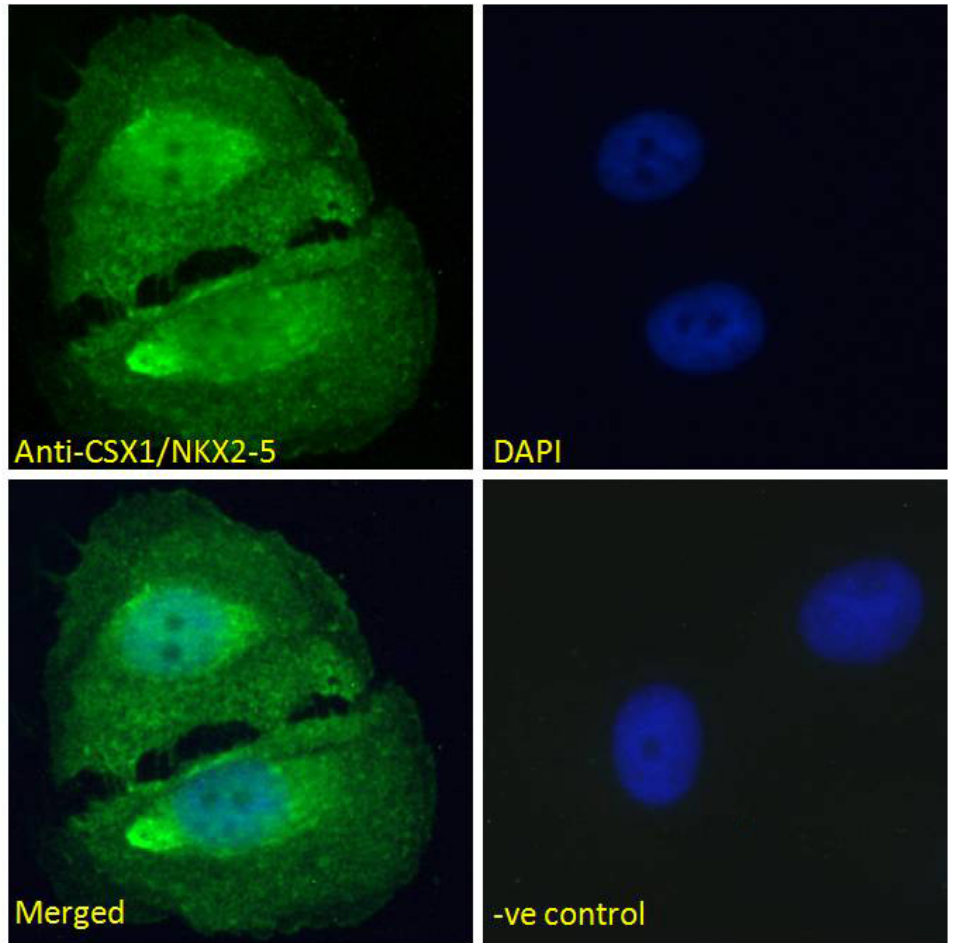
Expected from sequence similarity: Human, Mouse, Rat, Cow, Dog



EB09412 (0.3 μ g/ml) staining of Human Heart lysate (35 μ g protein in RIPA buffer). Detected by chemiluminescence.



EB09412 (3.75 μ g/ml) staining of paraffin embedded Human Heart. Steamed antigen retrieval with citrate buffer pH 6, AP-staining.



EB09412 Immunofluorescence analysis of paraformaldehyde fixed U2OS cells, permeabilized with 0.15% Triton. Primary incubation 1hr (5ug/ml) followed by Alexa Fluor 488 secondary antibody (2ug/ml), showing nuclear and cytoplasmic staining. The nuclear stain is DAPI (blue). Negative control: Unimmunized goat IgG (5ug/ml) followed by Alexa Fluor 488 secondary antibody (2ug/ml).