



UK Office

Everest Biotech Ltd

Cherwell Innovation Centre
77 Heyford Park
Upper Heyford
Oxfordshire
OX25 5HD
UK

Enquiries:

info@everestbiotech.com

Sales:

sales@everestbiotech.com

Tech support:

support@everestbiotech.com

Tel: +44 (0)1869 238326

Fax: +44 (0)1869 238327

US Office

Everest Biotech c/o Abcore

405 Maple Street, Suite A106
Ramona,
CA 92065
USA

Inquiries:

info@everestbiotech.com

Sales:

usasales@everestbiotech.com

Tech support:

support@everestbiotech.com

Tel: 888-320-4628 (toll-free)

Fax: 888-841-9041

www.everestbiotech.com

**Research Use Only. Not for
diagnostic or therapeutic use.**

EB06849-B - Goat Anti-CTDSP1, Biotinylated Antibody

Size: 100µg specific antibody in 200µl



Target Protein

Principal Names: CTDSP1, CTD small phosphatase 1, NIF3, NLI-IF, NLIIF, SCP1, CTD (carboxy-terminal domain, RNA polymerase II, polypeptide A) small phosphatase 1, NLI-interacting factor 3, nuclear LIM interactor-interacting factor 3, small C-terminal domain phosphatase 1

Official Symbol: CTDSP1

Accession Number(s): NP_067021.1; NP_872580.1; NP_001193807.1

Human GeneID(s): [58190](#)

Non-Human GeneID(s): 227292 (mouse), 363249 (rat)

Important Comments: This antibody is expected to recognize all three reported isoforms (NP_067021.1; NP_872580.1; NP_001193807.1).

Immunogen

Peptide with sequence EAKAQDSDKIC., from the internal region of the protein sequence according to NP_067021.1; NP_872580.1; NP_001193807.1.

Please note the [peptide](#) is available for sale.

Purification and Storage

Purified from goat serum by ammonium sulphate precipitation followed by antigen affinity chromatography using the immunizing peptide.

Supplied at 0.5 mg/ml in Tris saline, 0.02% sodium azide, pH7.3 with 0.5% bovine serum albumin.

Aliquot and store at -20°C. Minimize freezing and thawing.

Applications Tested

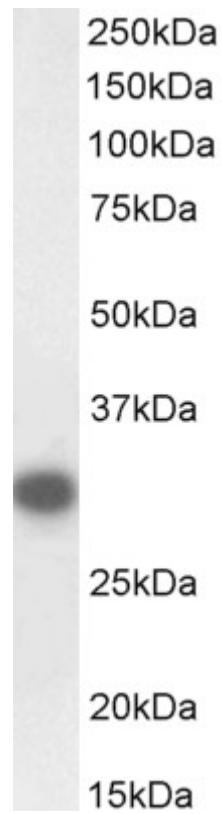
Peptide ELISA: antibody detection limit dilution 1:16000.

Western blot: Approx 30kDa band observed in Mouse Testis lysates (calculated MW of 29.3kDa according to Mouse NP_694728.1). See non-biotinylated parental product's datasheet for further QC data. Recommended concentration: 0.1-0.3µg/ml.

Species Reactivity

Tested: Human, Mouse

Expected from sequence similarity: Human, Mouse, Rat, Dog, Cow



Biotinylated EB06849 (0.1µg/ml) staining of Mouse Testis lysate (35µg protein in RIPA buffer), exactly mirroring its parental non-biotinylated product. Primary incubation was 1 hour. Detected by chemiluminescence, using streptavidin-HRP and using NAP blocker as a substitute for skimmed milk.