

## UK Office

### Everest Biotech Ltd

Cherwell Innovation Centre  
77 Heyford Park  
Upper Heyford  
Oxfordshire  
OX25 5HD  
UK

Enquiries:

[info@everestbiotech.com](mailto:info@everestbiotech.com)

Sales:

[sales@everestbiotech.com](mailto:sales@everestbiotech.com)

Tech support:

[support@everestbiotech.com](mailto:support@everestbiotech.com)

Tel: +44 (0)1869 238326

[www.everestbiotech.com](http://www.everestbiotech.com)

**Research Use Only. Not for  
diagnostic or therapeutic use.**

## EB08878 - Goat Anti-CTLA + CTLB Antibody

Size: 100µg specific antibody in 200µl



### Target Protein

**Principal Names:** CLTA, CTLB, clathrin, light chain (Lca), LCA, clathrin, light polypeptide (Lca), clathrin, light polypeptide A, clathrin, light chain (Lcb), LCB

**Official Symbol:** CLTA

**Accession Number(s):** NP\_001824.1; NP\_009027.1; NP\_001070145.1; NP\_001825.1; NP\_009028.1

**Human GeneID(s):** [1211](#) , [1212](#)

**Non-Human GeneID(s):** 12757 (mouse), 83800 (rat)

**Important Comments:** This antibody is expected to recognize all reported isoforms of light chains a and b.

### Immunogen

Peptide with sequence CDFNPKSSKQAKD, from the internal region of the protein sequence according to NP\_001824.1; NP\_009027.1; NP\_001070145.1; NP\_001825.1; NP\_009028.1.

Please note the [peptide](#) is available for sale.

### Purification and Storage

Purified from goat serum by ammonium sulphate precipitation followed by antigen affinity chromatography using the immunizing peptide.

Supplied at 0.5 mg/ml in Tris saline, 0.02% sodium azide, pH7.3 with 0.5% bovine serum albumin.

Aliquot and store at -20°C. Minimize freezing and thawing.

### Applications Tested

**Peptide ELISA:** antibody detection limit dilution 1:32000.

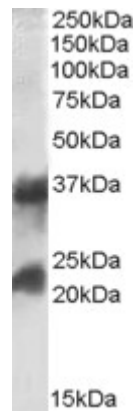
**Western blot:** Approx. 35kDa and 22-23kDa bands observed in Human Brain (Frontal Cortex) lysates (calculated MW of 23.2kDa according to NP\_001825.1). The observed molecular weight of ~35kDa corresponds to earlier findings in literature with different antibodies (Okamoto et al, Am J Physiol Cell Physiol. 2000 Sep;279(3):C833-51.; PMID: 10942733). Recommended concentration: 0.1-0.3µg/ml. Primary incubation was 1 hour.

**IHC:** Paraffin embedded Human Spleen. Recommended concentration: 2.5µg/ml.

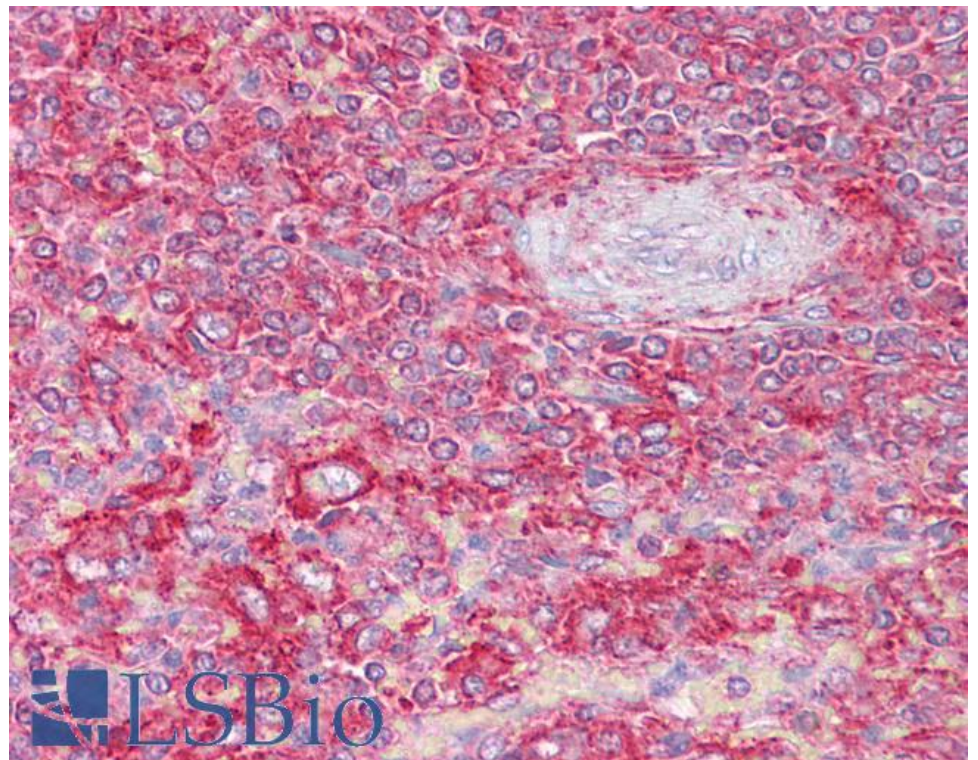
### Species Reactivity

**Tested:** Human

**Expected from sequence similarity:** Human, Mouse, Rat, Dog, Cow



EB08878 (0.1µg/ml) staining of Human Frontal Cortex lysate (35µg protein in RIPA buffer). Detected by chemiluminescence.



EB08878 (2.5µg/ml) staining of paraffin embedded Human Spleen. Steamed antigen retrieval with citrate buffer pH 6, AP-staining.