



UK Office

Everest Biotech Ltd

Cherwell Innovation Centre
77 Heyford Park
Upper Heyford
Oxfordshire
OX25 5HD
UK

Enquiries:

info@everestbiotech.com

Sales:

sales@everestbiotech.com

Tech support:

support@everestbiotech.com

Tel: +44 (0)1869 238326

Fax: +44 (0)1869 238327

US Office

Everest Biotech c/o Abcore

405 Maple Street, Suite A106
Ramona,
CA 92065
USA

Inquiries:

info@everestbiotech.com

Sales:

usasales@everestbiotech.com

Tech support:

support@everestbiotech.com

Tel: 888-320-4628 (toll-free)

Fax: 888-841-9041

www.everestbiotech.com

**Research Use Only. Not for
diagnostic or therapeutic use.**

EB12543 - Goat Anti-CTNNB1 / catenin beta-1 (aa108-121) Antibody

Size: 100µg specific antibody in 200µl



Target Protein

Principal Names: CTNNB1, catenin (cadherin-associated protein), beta 1, 88kDa, CTNNB, MRD19, armadillo, catenin beta-1

Official Symbol: CTNNB1

Accession Number(s): NP_001895.1

Human GeneID(s): [1499](#)

Non-Human GeneID(s): 12387 (mouse), 84353 (rat)

Important Comments: Reported variants represent identical protein: NP_001091679.1, NP_001895.1, NP_001091680.1.

Immunogen

Peptide with sequence C-QIPSTQFDAAHPTN, from the internal region of the protein sequence according to NP_001895.1.

Please note the [peptide](#) is available for sale.

Purification and Storage

Purified from goat serum by ammonium sulphate precipitation followed by antigen affinity chromatography using the immunizing peptide.

Supplied at 0.5 mg/ml in Tris saline, 0.02% sodium azide, pH7.3 with 0.5% bovine serum albumin.

Aliquot and store at -20°C. Minimize freezing and thawing.

Applications Tested

Peptide ELISA: antibody detection limit dilution 1:128000.

Western blot: Approx 100kDa band observed in lysates of cell line HeLa (calculated MW of 85.5kDa according to NP_001895.1). Recommended concentration: 0.3-1µg/ml.

Primary incubation 1 hour at room temperature..

IHC: Paraffin embedded Human Adrenal Gland. Recommended concentration: 5µg/ml.

Immunofluorescence: Expression of the protein seen in the cytoplasm/Plasma Membrane of U2OS cells. Recommended concentration: 10µg/ml.

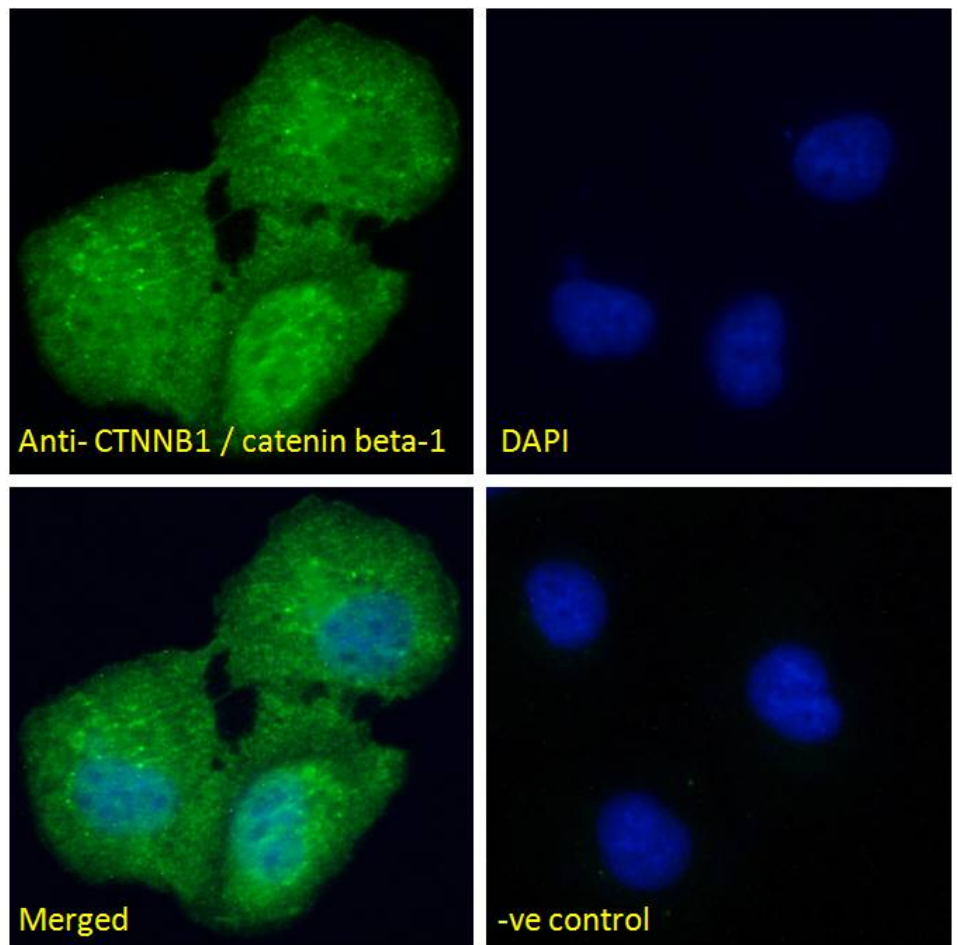
Species Reactivity

Tested: Human

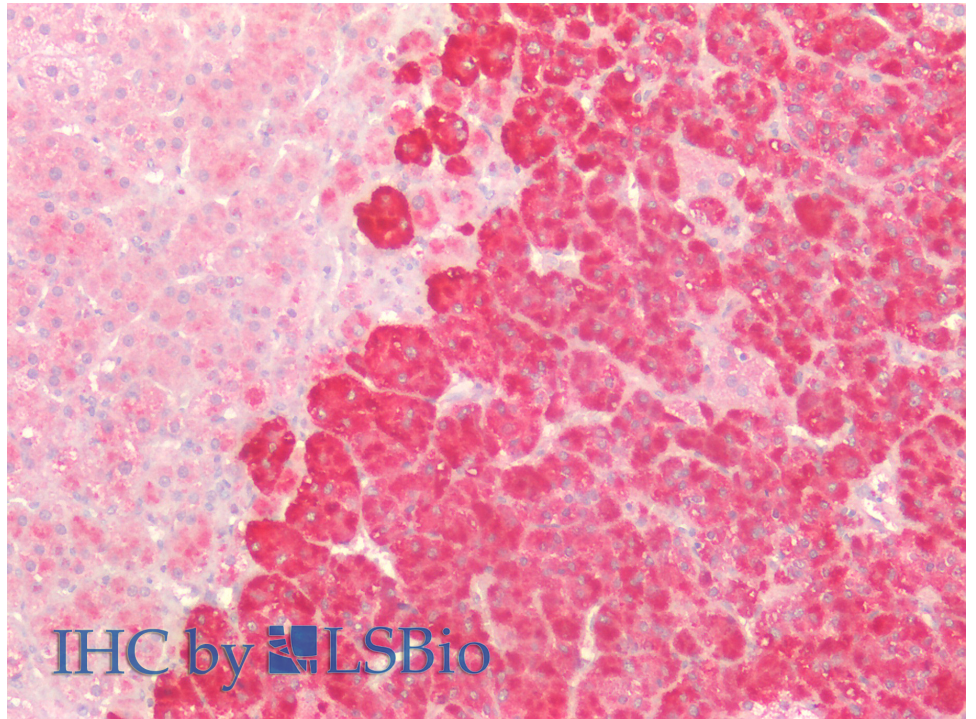
Expected from sequence similarity: Human, Mouse, Rat, Dog, Pig, Cow



EB12543 (0.3 μ g/ml) staining of HeLa lysate (35 μ g protein in RIPA buffer). Detected by chemiluminescence.



EB12543 Immunofluorescence analysis of paraformaldehyde fixed U2OS cells, permeabilized with 0.15% Triton. Primary incubation 1hr (10 μ g/ml) followed by Alexa Fluor 488 secondary antibody (4 μ g/ml), showing cytoplasm/Plasma Membrane staining. The nuclear stain is DAPI (blue). Negative control: Unimmunized goat IgG (10 μ g/ml) followed by Alexa Fluor 488 secondary antibody (4 μ g/ml).



EB12543 (5µg/ml) staining of paraffin embedded Human Adrenal Gland. Steamed antigen retrieval with citrate buffer pH 6, AP-staining.