

UK Office

Everest Biotech Ltd

Cherwell Innovation Centre
77 Heyford Park
Upper Heyford
Oxfordshire
OX25 5HD
UK

Enquiries:

info@everestbiotech.com

Sales:

sales@everestbiotech.com

Tech support:

support@everestbiotech.com

Tel: +44 (0)1869 238326

www.everestbiotech.com

**Research Use Only. Not for
diagnostic or therapeutic use.**

EB12230 - Goat Anti-CutA protein Antibody

Size: 100µg specific antibody in 200µl



Target Protein

Principal Names: CUTA, cutA divalent cation tolerance homolog (E. coli), ACHAP, C6orf82, acetylcholinesterase-associated protein, brain acetylcholinesterase putative membrane anchor, divalent cation tolerant protein CUTA, protein CutA

Official Symbol: CUTA

Accession Number(s): NP_001014433.1; NP_057005.1; NP_001014840.1

Human GeneID(s): [51596](#)

Important Comments: This antibody is expected to recognize all reported isoforms (NP_001014433.1; NP_057005.1; NP_001014840.1). Reported variants represent identical protein: NP_001014837.1, NP_001014838.1, NP_057005.1.

Immunogen

Peptide with sequence C-QVTESVSDSIT, from the C Terminus of the protein sequence according to NP_001014433.1; NP_057005.1; NP_001014840.1.

Please note the [peptide](#) is available for sale.

Purification and Storage

Purified from goat serum by ammonium sulphate precipitation followed by antigen affinity chromatography using the immunizing peptide.

Supplied at 0.5 mg/ml in Tris saline, 0.02% sodium azide, pH7.3 with 0.5% bovine serum albumin.

Aliquot and store at -20°C. Minimize freezing and thawing.

Applications Tested

Peptide ELISA: antibody detection limit dilution 1:64000.

Western blot: Approx 16kDa band observed in lysates of cell line Kelly (calculated MW of 16.8kDa according to NP_057005.1). Recommended concentration: 1-3µg/ml. Primary incubation was 1 hour.

IHC: Paraffin embedded Human Prostate. Recommended concentration: 5µg/ml.

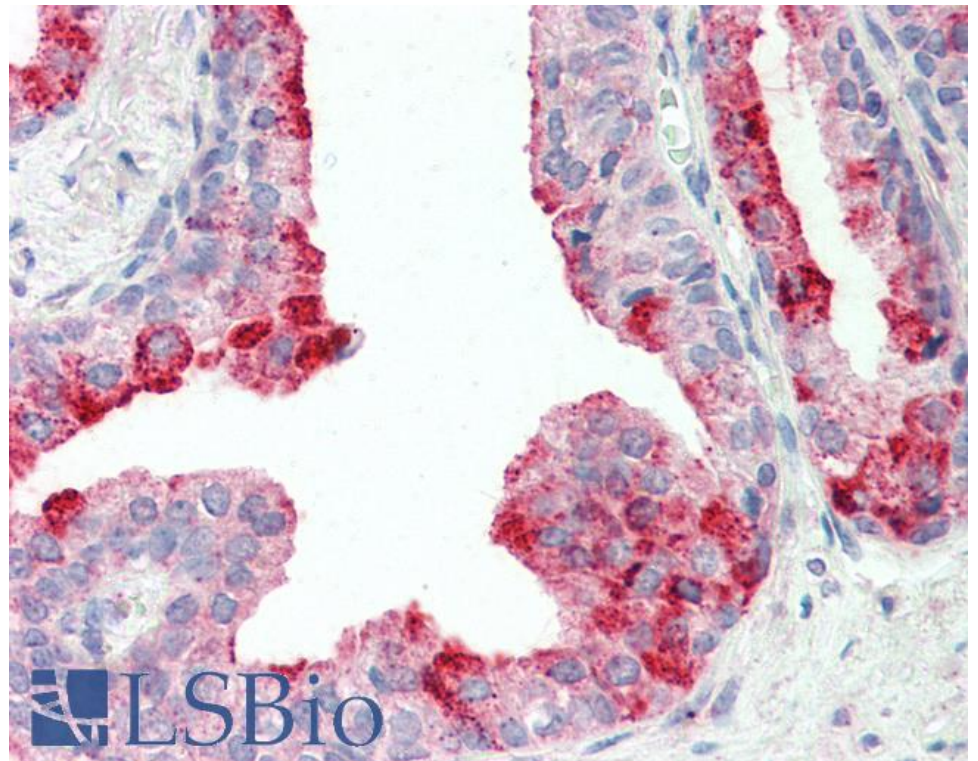
Species Reactivity

Tested: Human

Expected from sequence similarity: Human



EB12230 (1 μ g/ml) staining of Kelly lysate (35 μ g protein in RIPA buffer). Detected by chemiluminescence.



EB12230 (5 μ g/ml) staining of paraffin embedded Human Prostate. Steamed antigen retrieval with citrate buffer pH 6, AP-staining.