



UK Office

Everest Biotech Ltd

Cherwell Innovation Centre
77 Heyford Park
Upper Heyford
Oxfordshire
OX25 5HD
UK

Enquiries:

info@everestbiotech.com

Sales:

sales@everestbiotech.com

Tech support:

support@everestbiotech.com

Tel: +44 (0)1869 238326

www.everestbiotech.com

**Research Use Only. Not for
diagnostic or therapeutic use.**

EB12513 - Goat Anti-CX3CL1 / fractalkine (aa214-226) Antibody

Size: 100µg specific antibody in 200µl



Target Protein

Principal Names: CX3CL1, chemokine (C-X3-C motif) ligand 1, ABCD-3, C3Xkine, CXC3, CXC3C, NTN, NTT, SCYD1, fractalkine, neurotactin, C-X3-C motif chemokine 1, CX3C membrane-anchored chemokine, small inducible cytokine subfamily D (Cys-X3-Cys), member 1 (fract

Official Symbol: CX3CL1

Accession Number(s): NP_002987.1

Human GeneID(s): [6376](#)

Immunogen

Peptide with sequence C-KTSEAPSTQDPST, from the internal region of the protein sequence according to NP_002987.1.

Please note the [peptide](#) is available for sale.

Purification and Storage

Purified from goat serum by ammonium sulphate precipitation followed by antigen affinity chromatography using the immunizing peptide.

Supplied at 0.5 mg/ml in Tris saline, 0.02% sodium azide, pH7.3 with 0.5% bovine serum albumin.

Aliquot and store at -20°C. Minimize freezing and thawing.

Applications Tested

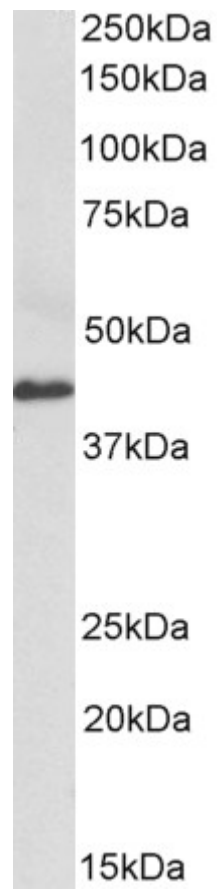
Peptide ELISA: antibody detection limit dilution 1:128000.

Western blot: Approx 45kDa band observed in Human Colorectal cancer lysates (calculated MW of 42.2kDa according to NP_002987.1). Recommended concentration: 0.3-1µg/ml.

Species Reactivity

Tested: Human

Expected from sequence similarity: Human



EB12513 (0.3 μ g/ml) staining of Human Colorectal cancer lysate (35 μ g protein in RIPA buffer). Primary incubation was 1 hour. Detected by chemiluminescence.