

## UK Office

### Everest Biotech Ltd

Cherwell Innovation Centre  
77 Heyford Park  
Upper Heyford  
Oxfordshire  
OX25 5HD  
UK

Enquiries:

[info@everestbiotech.com](mailto:info@everestbiotech.com)

Sales:

[sales@everestbiotech.com](mailto:sales@everestbiotech.com)

Tech support:

[support@everestbiotech.com](mailto:support@everestbiotech.com)

Tel: +44 (0)1869 238326

[www.everestbiotech.com](http://www.everestbiotech.com)

**Research Use Only. Not for  
diagnostic or therapeutic use.**

## EB12515 - Goat Anti-CX3CR1 (aa34-47) Antibody

Size: 100µg specific antibody in 200µl



### Target Protein

**Principal Names:** CX3CR1, chemokine (C-X3-C motif) receptor 1, CCRL1, CMKBRL1, CMKDR1, GPR13, GPRV28, V28, C-X3-C CKR-1, CMK-BRL-1, CMK-BRL1, CX3C chemokine receptor 1, G protein-coupled receptor 13, G-protein coupled receptor 13, beta chemokine receptor-like 1

**Official Symbol:** CX3CR1

**Accession Number(s):** NP\_001164645.1; NP\_001328.1

**Human GeneID(s):** [1524](#)

**Important Comments:** This antibody is expected to recognize both reported isoforms (NP\_001164645.1; NP\_001328.1). Reported variants represent identical protein: NP\_001164643.1, NP\_001328.1, NP\_001164642.1.

### Immunogen

Peptide with sequence C-DQFPESVTENFEYD, from the internal region (near N terminus) of the protein sequence according to NP\_001164645.1; NP\_001328.1.

Please note the [peptide](#) is available for sale.

### Purification and Storage

Purified from goat serum by ammonium sulphate precipitation followed by antigen affinity chromatography using the immunizing peptide.

Supplied at 0.5 mg/ml in Tris saline, 0.02% sodium azide, pH7.3 with 0.5% bovine serum albumin.

Aliquot and store at -20°C. Minimize freezing and thawing.

### Applications Tested

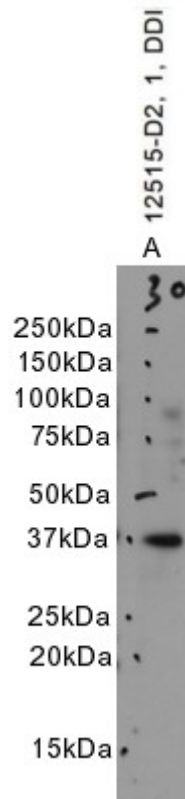
**Peptide ELISA:** antibody detection limit dilution 1:128000.

**Western blot:** Approx. 37kDa band observed in lysates of cell line Daudi (calculated MW of 40.4kDa according to NP\_001328.1). Recommended concentration: 1-2µg/ml. Primary incubation 1 hour at room temperature.

### Species Reactivity

**Tested:** Human

**Expected from sequence similarity:** Human



EB12515 optimised QC. Primary incubation 1 hour at room temperature.  
Image A: Daudi cell lysate at primary Ab concentration 1µg/ml. (Loaded 35µg protein in RIPA buffer, per lane). Detected by chemiluminescence.