

## UK Office

### Everest Biotech Ltd

Cherwell Innovation Centre  
77 Heyford Park  
Upper Heyford  
Oxfordshire  
OX25 5HD  
UK

Enquiries:

[info@everestbiotech.com](mailto:info@everestbiotech.com)

Sales:

[sales@everestbiotech.com](mailto:sales@everestbiotech.com)

Tech support:

[support@everestbiotech.com](mailto:support@everestbiotech.com)

Tel: +44 (0)1869 238326

[www.everestbiotech.com](http://www.everestbiotech.com)

**Research Use Only. Not for  
diagnostic or therapeutic use.**

## EB09352 - Goat Anti-CXCL2 / MIP-2 Antibody

Size: 100µg specific antibody in 200µl



### Target Protein

**Principal Names:** CXCL2, chemokine (C-X-C motif) ligand 2, CINC-2a, GRO2, GROb, MGSA-b, MIP-2a, MIP2, MIP2A, SCYB2, GRO2 oncogene, MGSA beta, melanoma growth stimulatory activity beta

**Official Symbol:** CXCL2

**Accession Number(s):** NP\_002080.1

**Human GeneID(s):** [2920](#)

### Immunogen

Peptide with sequence C-KKIIEKMLKNGKSN, from the C Terminus of the protein sequence according to NP\_002080.1.

Please note the [peptide](#) is available for sale.

### Purification and Storage

Purified from goat serum by ammonium sulphate precipitation followed by antigen affinity chromatography using the immunizing peptide.

Supplied at 0.5 mg/ml in Tris saline, 0.02% sodium azide, pH7.3 with 0.5% bovine serum albumin.

Aliquot and store at -20°C. Minimize freezing and thawing.

### Applications Tested

**Peptide ELISA:** antibody detection limit dilution 1:32000.

**Western blot:** Approx 15kDa band observed in in lysates of cell line Daudi (calculated MW of 11.4kDa according to NP\_002080.1). Recommended concentration: 0.03-0.1µg/ml. Approx 17Da band observed in Human Duodenum lysates (calculated MW of 11.4kDa according to NP\_002080.1).

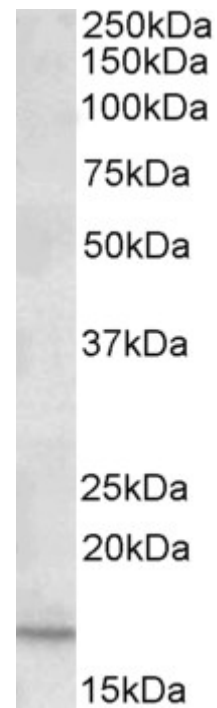
### Species Reactivity

**Tested:** Human

**Expected from sequence similarity:** Human



EB09352 (0.03 $\mu$ g/ml) staining of Daudi lysate (35 $\mu$ g protein in RIPA buffer). Primary incubation was 1 hour. Detected by chemiluminescence



EB09352 (0.2 $\mu$ g/ml) staining of Human Duodenum lysate (35 $\mu$ g protein in RIPA buffer). Primary incubation was 1 hour. Detected by chemiluminescence