



UK Office

Everest Biotech Ltd

Cherwell Innovation Centre
77 Heyford Park
Upper Heyford
Oxfordshire
OX25 5HD
UK

Enquiries:

info@everestbiotech.com

Sales:

sales@everestbiotech.com

Tech support:

support@everestbiotech.com

Tel: +44 (0)1869 238326

www.everestbiotech.com

**Research Use Only. Not for
diagnostic or therapeutic use.**

EB12777 - Goat Anti-CXCR7 / RDC1 Antibody

Size: 100µg specific antibody in 200µl



Target Protein

Principal Names: ACKR3, atypical chemokine receptor 3, CMKOR1, CXC-R7, CXCR-7, CXCR7, GPR159, RDC-1, RDC1, C-X-C chemokine receptor type 7, G protein-coupled receptor, G-protein coupled receptor 159, G-protein coupled receptor RDC1 homolog, chemokine (C-X-C motif) receptor

Official Symbol: ACKR3

Accession Number(s): NP_064707.1

Human GeneID(s): [57007](#)

Immunogen

Peptide with sequence C-TEYSALEQSTK, from the C Terminus of the protein sequence according to NP_064707.1.

Please note the [peptide](#) is available for sale.

Purification and Storage

Purified from goat serum by ammonium sulphate precipitation followed by antigen affinity chromatography using the immunizing peptide.

Supplied at 0.5 mg/ml in Tris saline, 0.02% sodium azide, pH7.3 with 0.5% bovine serum albumin.

Aliquot and store at -20°C. Minimize freezing and thawing.

Applications Tested

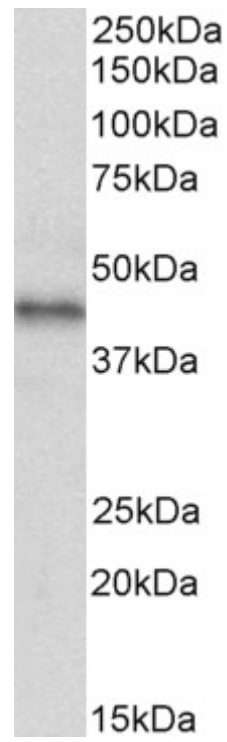
Peptide ELISA: antibody detection limit dilution 1:64000.

Western blot: Approx 42kDa band observed in Human Breast cancer lysates (calculated MW of 41.5kDa according to NP_064707.1). Recommended concentration: 1-3µg/ml.

Species Reactivity

Tested: Human

Expected from sequence similarity: Human



EB12777 (2 μ g/ml) staining of Human Breast cancer lysate (35 μ g protein in RIPA buffer). Primary incubation was 1 hour. Detected by chemiluminescence.