



UK Office

Everest Biotech Ltd

Cherwell Innovation Centre
77 Heyford Park
Upper Heyford
Oxfordshire
OX25 5HD
UK

Enquiries:

info@everestbiotech.com

Sales:

sales@everestbiotech.com

Tech support:

support@everestbiotech.com

Tel: +44 (0)1869 238326

www.everestbiotech.com

**Research Use Only. Not for
diagnostic or therapeutic use.**

EB09211 - Goat Anti-CXXC4 Antibody

Size: 100µg specific antibody in 200µl



Target Protein

Principal Names: CXXC4, CXXC finger 4, IDAX, MGC149872, Dvl-binding protein IDAX (inhibition of the Dvl and Axin complex), inhibition of the Dvl and Axin complex

Official Symbol: CXXC4

Accession Number(s): NP_079488.1

Human GeneID(s): [80319](#)

Non-Human GeneID(s): 319478 (mouse)

Immunogen

Peptide with sequence C-GTSLERTPVPSAEA, from the C-Terminus (near) of the protein sequence according to NP_079488.1.

Please note the [peptide](#) is available for sale.

Purification and Storage

Purified from goat serum by ammonium sulphate precipitation followed by antigen affinity chromatography using the immunizing peptide.

Supplied at 0.5 mg/ml in Tris saline, 0.02% sodium azide, pH7.3 with 0.5% bovine serum albumin.

Aliquot and store at -20°C. Minimize freezing and thawing.

Applications Tested

Peptide ELISA: antibody detection limit dilution 1:32000.

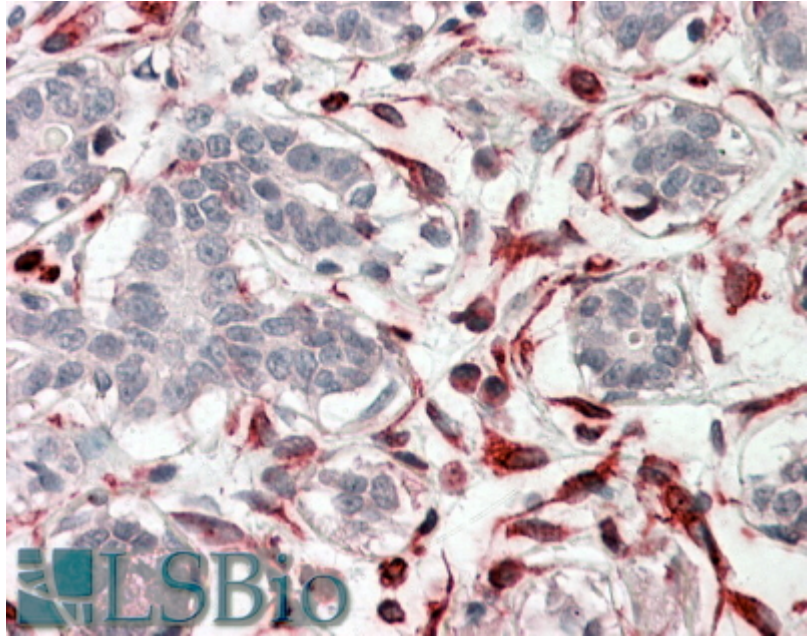
Western blot: Preliminary experiments in Human Brain (Cerebellum, Hippocampus) lysates gave no specific signal but low background (at antibody concentration up to 1µg/ml). We would appreciate any feedback from people in the field - have any results been reported with other antibodies/lysates?

IHC: In paraffin embedded Human Breast shows cytoplasm staining in myoepithelial cells. Recommended concentration, 3-5µg/ml.

Species Reactivity

Tested: Human

Expected from sequence similarity: Human, Mouse



EB09211 (3.8µg/ml) staining of paraffin embedded Human Breast. Steamed antigen retrieval with citrate buffer pH 6, AP-staining.