



## UK Office

### Everest Biotech Ltd

Cherwell Innovation Centre  
77 Heyford Park  
Upper Heyford  
Oxfordshire  
OX25 5HD  
UK

Enquiries:

[info@everestbiotech.com](mailto:info@everestbiotech.com)

Sales:

[sales@everestbiotech.com](mailto:sales@everestbiotech.com)

Tech support:

[support@everestbiotech.com](mailto:support@everestbiotech.com)

Tel: +44 (0)1869 238326

[www.everestbiotech.com](http://www.everestbiotech.com)

**Research Use Only. Not for  
diagnostic or therapeutic use.**

## EB11476 - Goat Anti-Cyb5r4 (mouse aa444-458) Antibody

Size: 100µg specific antibody in 200µl



### Target Protein

**Principal Names:** 2810034J18Rik, b5/b5r, B5+B5R, b5b5r, C79736, cb5/cb5R, Cb5cb5r, Cyb5r4, cytochrome b5 reductase 4, cytochrome b-type NAD(P)H oxidoreductase, flavohemoprotein b5/b5R, NADPH cytochrome B5 oxidoreductase, Ncb5or, N-terminal cytochrome b5 and cytochrome b5 oxidoreductase domain-containing protein

**Official Symbol:** Cyb5r4

**Accession Number(s):** NP\_077157.2

**Non-Human GeneID(s):** 266690 (mouse)

### Immunogen

Peptide with sequence RCQLEKLALREKRFD, from the internal region of the protein sequence according to NP\_077157.2.

Please note the [peptide](#) is available for sale.

### Purification and Storage

Purified from goat serum by ammonium sulphate precipitation followed by antigen affinity chromatography using the immunizing peptide.

Supplied at 0.5 mg/ml in Tris saline, 0.02% sodium azide, pH7.3 with 0.5% bovine serum albumin.

Aliquot and store at -20°C. Minimize freezing and thawing.

### Applications Tested

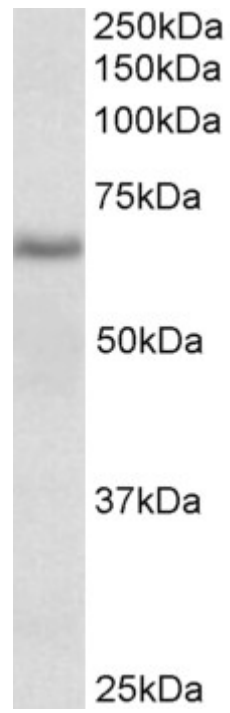
**Peptide ELISA:** antibody detection limit dilution 1:64000.

**Western blot:** Approx 65kDa band observed in Rat Spleen lysates (calculated MW of 55kDa according to NP\_596918.2 and 58.8kDa according to Q68EJ0-1). Recommended concentration: 0.1-0.3µg/ml.

### Species Reactivity

**Tested:** Rat

**Expected from sequence similarity:** Mouse, Rat



EB11476 (0.1  $\mu\text{g/ml}$ ) staining of Rat Spleen lysate (35  $\mu\text{g}$  protein in RIPA buffer). Primary incubation was 1 hour.  
Detected by chemiluminescence.