



UK Office

Everest Biotech Ltd

Cherwell Innovation Centre
77 Heyford Park
Upper Heyford
Oxfordshire
OX25 5HD
UK

Enquiries:

info@everestbiotech.com

Sales:

sales@everestbiotech.com

Tech support:

support@everestbiotech.com

Tel: +44 (0)1869 238326

Fax: +44 (0)1869 238327

US Office

Everest Biotech c/o Abcore

405 Maple Street, Suite A106
Ramona,
CA 92065
USA

Inquiries:

info@everestbiotech.com

Sales:

usasales@everestbiotech.com

Tech support:

support@everestbiotech.com

Tel: 888-320-4628 (toll-free)

Fax: 888-841-9041

www.everestbiotech.com

**Research Use Only. Not for
diagnostic or therapeutic use.**

EB05366 - Goat Anti-CYBR / PSCDBP Antibody

Size: 100µg specific antibody in 200µl



Target Protein

Principal Names: CYTIP, PSCDBP, CYBR, pleckstrin homology, Sec7 and coiled/coil domains, binding protein, HE, B3-1, CASP, cytohesin binding protein HE, cytohesin-1 interacting protein, pleckstrin homology, Sec7, and coiled-coil domains protein-binding protein, cytohesin 1 interacting protein, cytohesin binder and regulator, pleckstrin homology, Sec7 and coiled-coil domains, binding protein, pleckstrin homology, Sec7 and coiled/coil domains, binding protein

Official Symbol: CYTIP

Accession Number(s): NP_004279.3

Human GeneID(s): [9595](#)

Immunogen

Peptide with sequence SLQRLLQHSSNGN-C, from the N Terminus of the protein sequence according to NP_004279.3.

Please note the [peptide](#) is available for sale.

Purification and Storage

Purified from goat serum by ammonium sulphate precipitation followed by antigen affinity chromatography using the immunizing peptide.

Supplied at 0.5 mg/ml in Tris saline, 0.02% sodium azide, pH7.3 with 0.5% bovine serum albumin.

Aliquot and store at -20°C. Minimize freezing and thawing.

Applications Tested

Peptide ELISA: antibody detection limit dilution 1:16000.

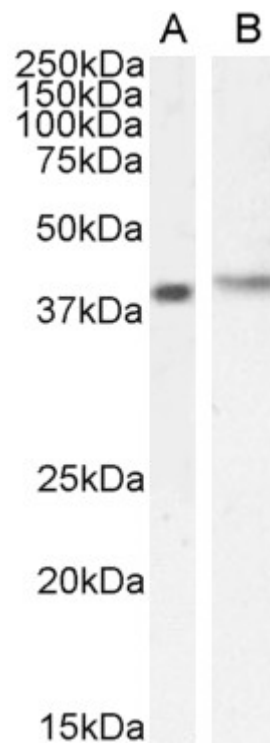
Western blot: Approx 38kDa band observed in lysates of cell line Jurkat and approx 40kDa in ysates of cell line MOLT4 (calculated MW of 40kDa according to NP_004279.3). Recommended concentration: 0.3-1µg/ml. Primary incubation 1 hour at room temperature.

Immunofluorescence: Expression of the protein seen in the cytoplasm and nucleus of A431 and U251 cells. Recommended concentration: 10µg/ml.

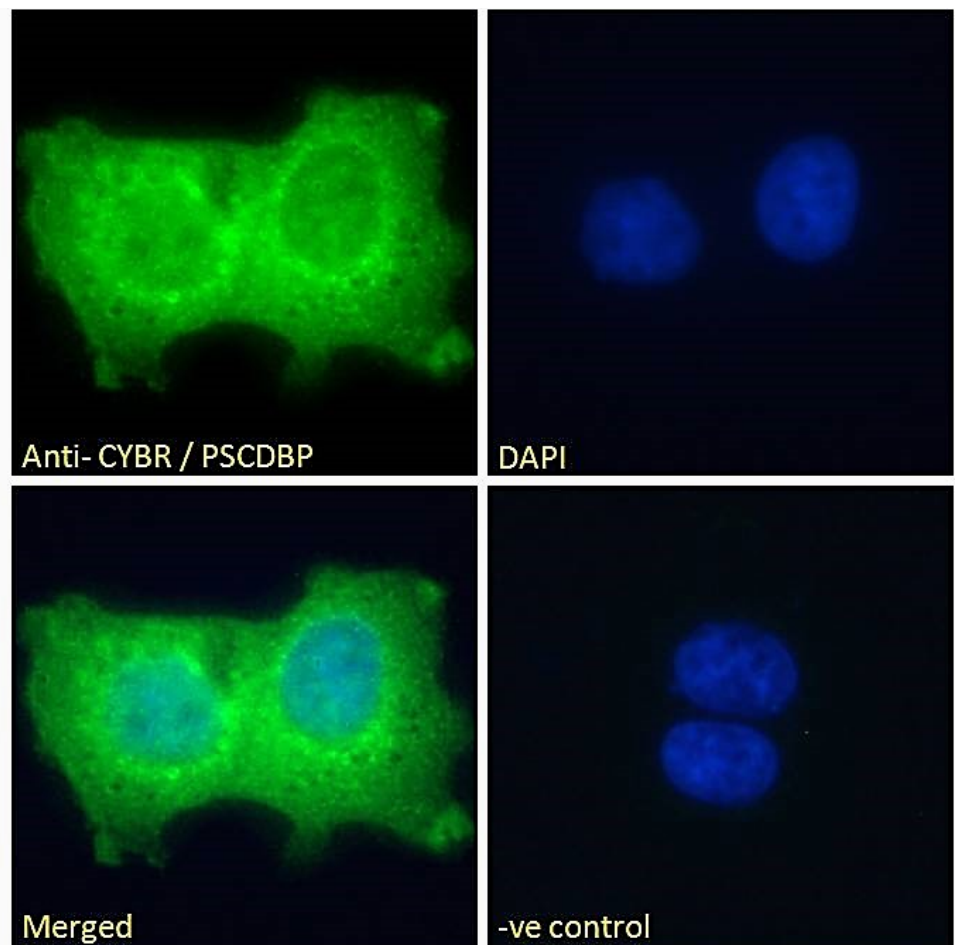
Species Reactivity

Tested: Human

Expected from sequence similarity: Human, Dog, Pig

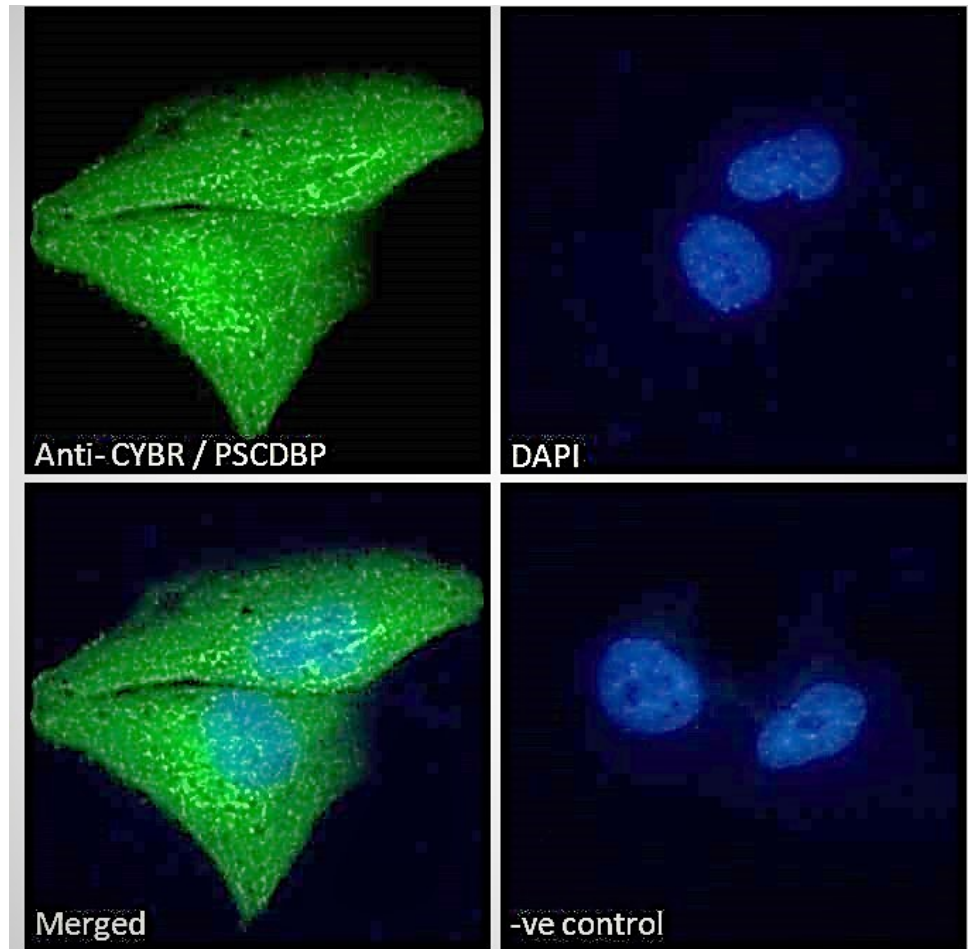


EB05366 (0.5 μ g/ml) staining of Jurkat (A) and (1 μ g/ml) MOLT4 (B) cell lysate (35 μ g protein in RIPA buffer).
Detected by chemiluminescence.



EB05366 Immunofluorescence analysis of paraformaldehyde fixed A431 cells, permeabilized with 0.15% Triton. Primary incubation 1hr (10 μ g/ml) followed by Alexa Fluor 488 secondary antibody (2 μ g/ml), showing cytoplasmic and nuclear staining. The nuclear stain is DAPI (blue). Negative control: Unimmunized goat IgG (10 μ g/ml)

followed by Alexa Fluor 488 secondary antibody (2ug/ml).



EB05366 Immunofluorescence analysis of paraformaldehyde fixed U251 cells, permeabilized with 0.15% Triton. Primary incubation 1hr (10ug/ml) followed by Alexa Fluor 488 secondary antibody (2ug/ml), showing strong cytoplasmic and weak nuclear staining. The nuclear stain is DAPI (blue). Negative control: Unimmunized goat IgG (10ug/ml) followed by Alexa Fluor 488 secondary antibody (2ug/ml).