



UK Office

Everest Biotech Ltd

Cherwell Innovation Centre
77 Heyford Park
Upper Heyford
Oxfordshire
OX25 5HD
UK

Enquiries:

info@everestbiotech.com

Sales:

sales@everestbiotech.com

Tech support:

support@everestbiotech.com

Tel: +44 (0)1869 238326

Fax: +44 (0)1869 238327

US Office

Everest Biotech c/o Abcore

405 Maple Street, Suite A106
Ramona,
CA 92065
USA

Inquiries:

info@everestbiotech.com

Sales:

usasales@everestbiotech.com

Tech support:

support@everestbiotech.com

Tel: 888-320-4628 (toll-free)

Fax: 888-841-9041

www.everestbiotech.com

**Research Use Only. Not for
diagnostic or therapeutic use.**

EB07066 - Goat Anti-Cyclophilin A / PPIA Antibody

Size: 100µg specific antibody in 200µl

Target Protein

Principal Names: PPIA, peptidylprolyl isomerase A (cyclophilin A), HGNC:9253, CYPA, CYPH, MGC12404, T cell cyclophilin, cyclosporin A-binding protein, peptidyl-prolyl cis-trans isomerase A, peptidylprolyl isomerase A, rotamase, MGC117158, MGC23397, PPIase A

Official Symbol: PPIA

Accession Number(s): NP_066953.1

Human GeneID(s): [5478](#)

Important Comments: This product is expected to also recognise PPIAL (NP_001008741.1, GeneID: 388817) which is identical to PPIA (NP_066953.1).

Immunogen

Peptide with sequence C-ERFGSRNGKTSKK, from the internal region of the protein sequence according to NP_066953.1.

Please note the [peptide](#) is available for sale.

Purification and Storage

Purified from goat serum by ammonium sulphate precipitation followed by antigen affinity chromatography using the immunizing peptide.

Supplied at 0.5 mg/ml in Tris saline, 0.02% sodium azide, pH7.3 with 0.5% bovine serum albumin.

Aliquot and store at -20°C. Minimize freezing and thawing.

Applications Tested

Peptide ELISA: antibody detection limit dilution 1:8000.

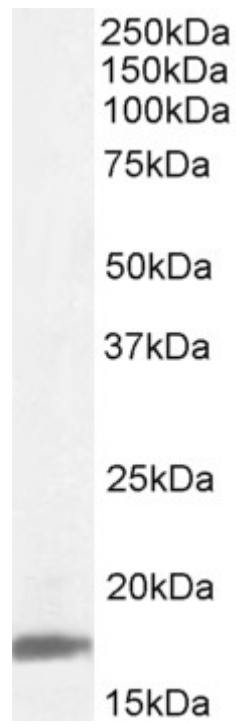
Western blot: Approx. 18kDa band observed in Human Lymph Node lysates (calculated MW 18.0kDa according to NP_066953.1). Recommended Concentration: 0.1-0.3ug/ml.

Primary incubation was 1 hour.

Species Reactivity

Tested: Human

Expected from sequence similarity: Human, Mouse, Rat, Dog, Pig, Cow



EB07066 (0.1µg/ml) staining of Human Lymph Node lysate (35µg protein in RIPA buffer). Detected by chemiluminescence.