



UK Office

Everest Biotech Ltd

Cherwell Innovation Centre
77 Heyford Park
Upper Heyford
Oxfordshire
OX25 5HD
UK

Enquiries:

info@everestbiotech.com

Sales:

sales@everestbiotech.com

Tech support:

support@everestbiotech.com

Tel: +44 (0)1869 238326

Fax: +44 (0)1869 238327

US Office

Everest Biotech c/o Abcore

405 Maple Street, Suite A106
Ramona,
CA 92065
USA

Inquiries:

info@everestbiotech.com

Sales:

usasales@everestbiotech.com

Tech support:

support@everestbiotech.com

Tel: 888-320-4628 (toll-free)

Fax: 888-841-9041

www.everestbiotech.com

**Research Use Only. Not for
diagnostic or therapeutic use.**

EB07719 - Goat Anti-Cyld (mouse) Antibody

Size: 100µg specific antibody in 200µl



Target Protein

Principal Names: CYLD, cylindromatosis (turban tumor syndrome), 2010013M14Rik, 2900009M21Rik, C130039D01Rik, CDMT, CYLD1, EAC, mKIAA0849, ubiquitin carboxyl-terminal hydrolase CYLD

Official Symbol: Cyld

Accession Number(s): NP_775545.1

Non-Human GeneID(s): 74256 (mouse), 312937 (rat)

Immunogen

Peptide with sequence C-DSQQSKSKNPWYIDE, from the internal region of the protein sequence according to NP_775545.1.

Please note the [peptide](#) is available for sale.

Purification and Storage

Purified from goat serum by ammonium sulphate precipitation followed by antigen affinity chromatography using the immunizing peptide.

Supplied at 0.5 mg/ml in Tris saline, 0.02% sodium azide, pH7.3 with 0.5% bovine serum albumin.

Aliquot and store at -20°C. Minimize freezing and thawing.

Applications Tested

Peptide ELISA: antibody detection limit dilution 1:32000.

Western blot: Approx 125kDa band observed in Rat Brain lysates (calculated MW of 107kDa according to mouse NP_775545.1). Recommended concentration: 0.5-1.5µg/ml.

IHC: Paraffin embedded Mouse Brain. Recommended concentration: 5µg/ml.

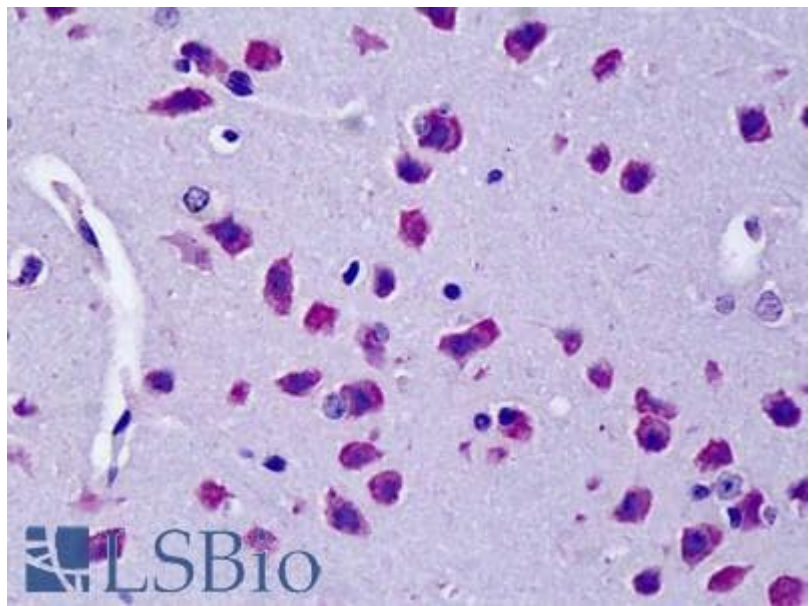
Species Reactivity

Tested: Rat, Mouse

Expected from sequence similarity: Mouse, Rat



EB07719 (0.5 μ g/ml) staining of Rat Brain lysate (35 μ g protein in RIPA buffer). Primary incubation was 1 hour.
Detected by chemiluminescence.



EB07719 (5 μ g/ml) staining of paraffin embedded Mouse Brain. Steamed antigen retrieval with citrate buffer pH 6,
AP-staining.