

UK Office

Everest Biotech Ltd

Cherwell Innovation Centre
77 Heyford Park
Upper Heyford
Oxfordshire
OX25 5HD
UK

Enquiries:

info@everestbiotech.com

Sales:

sales@everestbiotech.com

Tech support:

support@everestbiotech.com

Tel: +44 (0)1869 238326

www.everestbiotech.com

**Research Use Only. Not for
diagnostic or therapeutic use.**

EB10490 - Goat Anti-CYP24A1 Antibody

Size: 100µg specific antibody in 200µl



Target Protein

Principal Names: 1,25-@dihydroxyvitamin D3 24-hydroxylase, 24-OHase, CP24, CYP24, cytochrome P450 family 24 subfamily A polypeptide 1, cytochrome P450, family 24, subfamily A, polypeptide 1, cytochrome P450, subfamily XXIV (vitami, MGC126273, MGC126274, P450-CC24, CYP24A1

Official Symbol: CYP24A1

Accession Number(s): NP_000773.2; NP_001122387.1

Human GeneID(s): [1591](#)

Important Comments: This antibody is expected to recognize both reported isoforms (NP_000773.2; NP_001122387.1).

Immunogen

Peptide with sequence C-RKYDIQATDN, from the internal region of the protein sequence according to NP_000773.2; NP_001122387.1.

Please note the [peptide](#) is available for sale.

Purification and Storage

Purified from goat serum by ammonium sulphate precipitation followed by antigen affinity chromatography using the immunizing peptide.

Supplied at 0.5 mg/ml in Tris saline, 0.02% sodium azide, pH7.3 with 0.5% bovine serum albumin.

Aliquot and store at -20°C. Minimize freezing and thawing.

Applications Tested

Peptide ELISA: antibody detection limit dilution 1:32000.

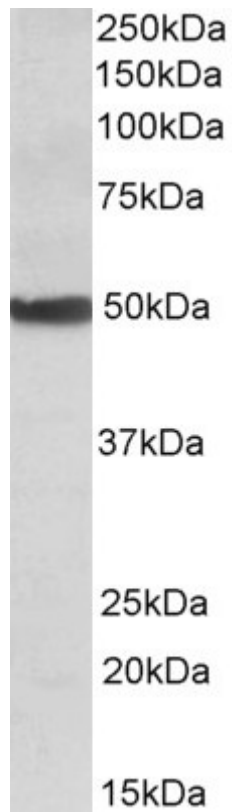
Western blot: Approx 50kDa band observed in Human and Rat Liver lysates (calculated MW of 51.2kDa according to NP_001122387.1). Recommended concentration: 0.1-0.3µg/ml. Primary incubation was 1 hour.

IHC: Paraffin embedded Human Skin. Recommended concentration: 3.75µg/ml.

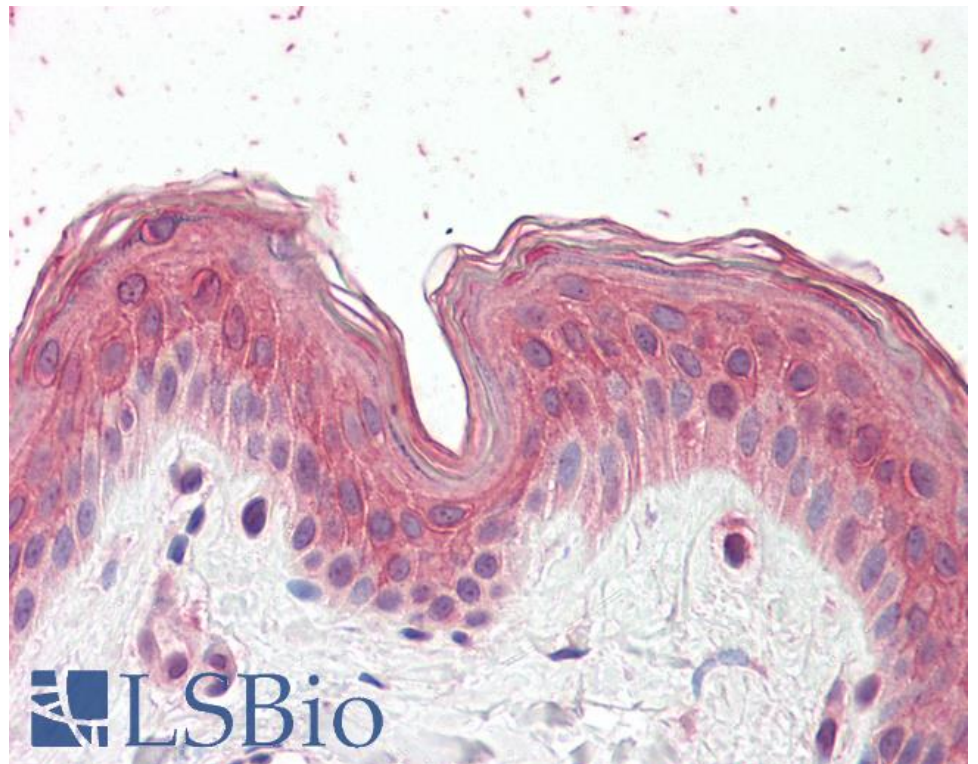
Species Reactivity

Tested: Human, Rat

Expected from sequence similarity: Human



EB10490 (0.1 μ g/ml) staining of Human Liver lysate (35 μ g protein in RIPA buffer). Detected by chemiluminescence.



EB10490 (3.75 μ g/ml) staining of paraffin embedded Human Skin. Steamed antigen retrieval with citrate buffer pH 6, AP-staining.