



UK Office

Everest Biotech Ltd

Cherwell Innovation Centre
77 Heyford Park
Upper Heyford
Oxfordshire
OX25 5HD
UK

Enquiries:

info@everestbiotech.com

Sales:

sales@everestbiotech.com

Tech support:

support@everestbiotech.com

Tel: +44 (0)1869 238326

Fax: +44 (0)1869 238327

US Office

Everest Biotech c/o Abcore

405 Maple Street, Suite A106
Ramona,
CA 92065
USA

Inquiries:

info@everestbiotech.com

Sales:

usasales@everestbiotech.com

Tech support:

support@everestbiotech.com

Tel: 888-320-4628 (toll-free)

Fax: 888-841-9041

www.everestbiotech.com

**Research Use Only. Not for
diagnostic or therapeutic use.**

EB10750 - Goat Anti-Cyp2d5 / Cyp2d10 (rat) Antibody

Size: 100µg specific antibody in 200µl



Target Protein

Principal Names: Cyp2d5, cytochrome P450, family 2, subfamily d, polypeptide 5, Cyp2d10, MGC108540, CYP11D10, P450-CMF1B, P450-DB5, cytochrome P450 2D10, cytochrome P450, family 2, subfamily d, polypeptide 10, cytochrome P450-DB5, cytochrome P450CMF

Official Symbol: Cyp2d5

Accession Number(s): NP_775426.1

Non-Human GeneID(s): 286963 (rat)

Immunogen

Peptide with sequence CDAFTAQNGRSINPK, from the internal region of the protein sequence according to NP_775426.1.

Please note the [peptide](#) is available for sale.

Purification and Storage

Purified from goat serum by ammonium sulphate precipitation followed by antigen affinity chromatography using the immunizing peptide.

Supplied at 0.5 mg/ml in Tris saline, 0.02% sodium azide, pH7.3 with 0.5% bovine serum albumin.

Aliquot and store at -20°C. Minimize freezing and thawing.

Applications Tested

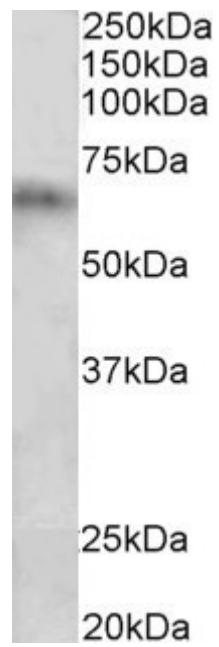
Peptide ELISA: antibody detection limit dilution 1:32000.

Western blot: Approx 65kDa band observed in Rat Spleen lysates (calculated MW of 57.1kDa according to NP_775426.1). Recommended concentration: 1-3µg/ml.

Species Reactivity

Tested: Rat

Expected from sequence similarity: Rat



EB10750 (2 μ g/ml) staining of Rat Spleen lysate (35 μ g protein in RIPA buffer). Primary incubation was 1 hour.
Detected by chemiluminescence.