



UK Office

Everest Biotech Ltd

Cherwell Innovation Centre
77 Heyford Park
Upper Heyford
Oxfordshire
OX25 5HD
UK

Enquiries:

info@everestbiotech.com

Sales:

sales@everestbiotech.com

Tech support:

support@everestbiotech.com

Tel: +44 (0)1869 238326

Fax: +44 (0)1869 238327

US Office

Everest Biotech c/o Abcore

405 Maple Street, Suite A106
Ramona,
CA 92065
USA

Inquiries:

info@everestbiotech.com

Sales:

usasales@everestbiotech.com

Tech support:

support@everestbiotech.com

Tel: 888-320-4628 (toll-free)

Fax: 888-841-9041

www.everestbiotech.com

**Research Use Only. Not for
diagnostic or therapeutic use.**

EB12306 - Goat Anti-Cyp2r1 (mouse aa405-418) Antibody

Size: 100µg specific antibody in 200µl



Target Protein

Principal Names: CYP2R1, cytochrome P450, family 2, subfamily R, polypeptide 1, cytochrome P450 2R1, cytochrome P450, family 2, R1, vitamin D 25-hydroxylase

Official Symbol: CYP2R1

Accession Number(s): NP_796356.2

Human GeneID(s): [120227](#)

Non-Human GeneID(s): 244209 (mouse), 361631 (rat)

Immunogen

Peptide with sequence C-YSVHFDEKYWKDPD, from the internal region of the protein sequence according to NP_796356.2.

Please note the [peptide](#) is available for sale.

Purification and Storage

Purified from goat serum by ammonium sulphate precipitation followed by antigen affinity chromatography using the immunizing peptide.

Supplied at 0.5 mg/ml in Tris saline, 0.02% sodium azide, pH7.3 with 0.5% bovine serum albumin.

Aliquot and store at -20°C. Minimize freezing and thawing.

Applications Tested

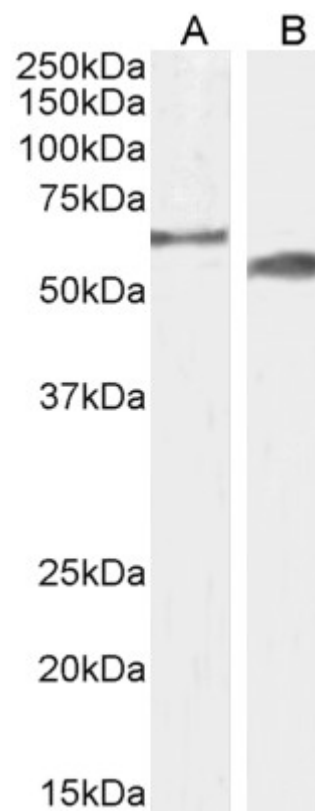
Peptide ELISA: antibody detection limit dilution 1:1000.

Western blot: Approx 60kDa band observed in Mouse Testis and approx 55-60kDa in Rat Testis lysates (calculated MW of 57.3kDa according to Mouse NP_796356.2 and 54.2kDa according to Rat XP_006230144.1). Recommended concentration: 1-3µg/ml. Primary incubation 1 hour at room temperature.

Species Reactivity

Tested: Mouse, Rat

Expected from sequence similarity: Mouse, Rat



EB12306 (2 μ g/ml) staining of Mouse (A) and Rat (B) Testes lysate (35 μ g protein in RIPA buffer). Detected by chemiluminescence.