



## UK Office

### Everest Biotech Ltd

Cherwell Innovation Centre  
77 Heyford Park  
Upper Heyford  
Oxfordshire  
OX25 5HD  
UK

Enquiries:

[info@everestbiotech.com](mailto:info@everestbiotech.com)

Sales:

[sales@everestbiotech.com](mailto:sales@everestbiotech.com)

Tech support:

[support@everestbiotech.com](mailto:support@everestbiotech.com)

Tel: +44 (0)1869 238326

Fax: +44 (0)1869 238327

## US Office

### Everest Biotech c/o Abcore

405 Maple Street, Suite A106  
Ramona,  
CA 92065  
USA

Inquiries:

[info@everestbiotech.com](mailto:info@everestbiotech.com)

Sales:

[usasales@everestbiotech.com](mailto:usasales@everestbiotech.com)

Tech support:

[support@everestbiotech.com](mailto:support@everestbiotech.com)

Tel: 888-320-4628 (toll-free)

Fax: 888-841-9041

[www.everestbiotech.com](http://www.everestbiotech.com)

**Research Use Only. Not for  
diagnostic or therapeutic use.**

## EB10306 - Goat Anti-CYPOR Antibody

Size: 100µg specific antibody in 200µl



### Target Protein

**Principal Names:** CPR, CYPOR, cytochrome P450 reductase, DKFZp686G04235, FLJ26468, NADPH-dependent cytochrome P450 reductase, P450 (cytochrome) oxidoreductase, P450R, POR

**Official Symbol:** POR

**Accession Number(s):** NP\_000932.3

**Human GeneID(s):** [5447](#)

**Non-Human GeneID(s):** 18984 (mouse), 29441 (rat)

### Immunogen

Peptide with sequence C-TNPPRTNVLVE, from the internal region of the protein sequence according to NP\_000932.3.

Please note the [peptide](#) is available for sale.

### Purification and Storage

Purified from goat serum by ammonium sulphate precipitation followed by antigen affinity chromatography using the immunizing peptide.

Supplied at 0.5 mg/ml in Tris saline, 0.02% sodium azide, pH7.3 with 0.5% bovine serum albumin.

Aliquot and store at -20°C. Minimize freezing and thawing.

### Applications Tested

**Peptide ELISA:** antibody detection limit dilution 1:16000.

**Western blot:** Approx 90kDa band observed in Human, Mouse and Rat Liver lysates (calculated MW of 77.0kDa according to NP\_000932.3). Recommended concentration: 0.1-0.3µg/ml. Primary incubation was 1 hour.

**IHC:** Paraffin embedded Human Adrenal Gland. Recommended concentration: 3.75µg/ml.

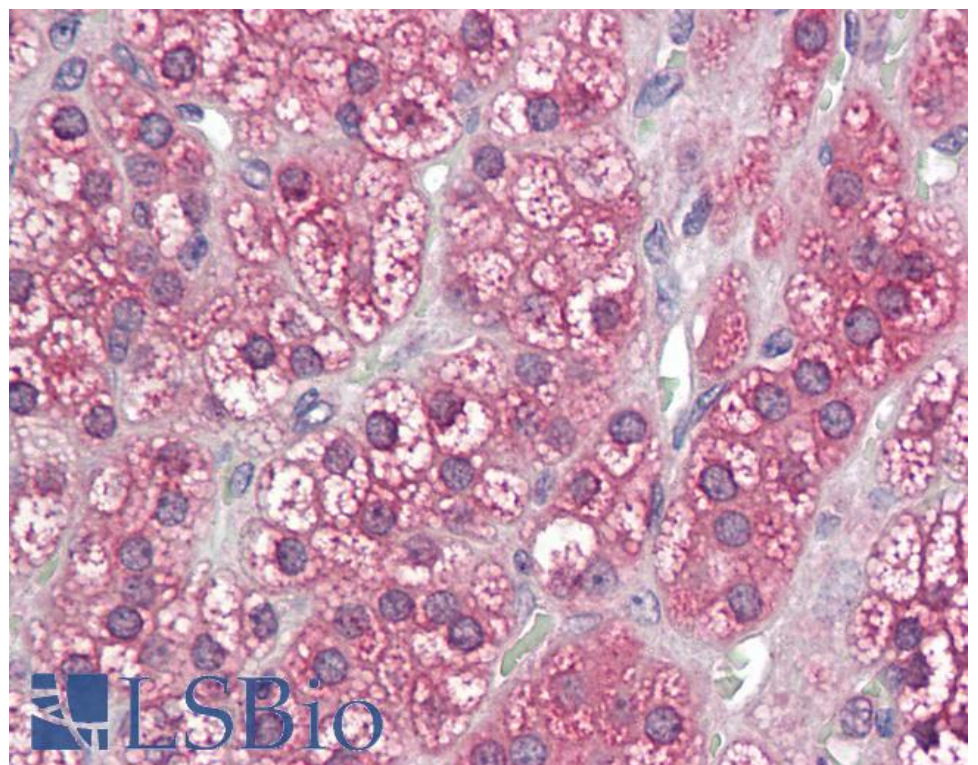
### Species Reactivity

**Tested:** Human, Mouse, Rat

**Expected from sequence similarity:** Human, Mouse, Rat, Dog, Cow, Pig



EB10306 (0.1 µg/ml) staining of Rat Liver lysate (35 µg protein in RIPA buffer). Detected by chemiluminescence.



EB10306 (3.75 µg/ml) staining of paraffin embedded Human Adrenal Gland. Steamed antigen retrieval with citrate buffer pH 6, AP-staining.