



Everest Biotech Ltd
Cherwell Innovation Centre
77 Heyford Park
Upper Heyford
Oxfordshire
OX25 5HD, United Kingdom

everestbiotech.com

sales@everestbiotech.com

support@everestbiotech.com

Tel +44 1869 238326

Fax +44 1869 238327

Research Use Only. Not for diagnostic or therapeutic use.

Storage: For long-term storage keep aliquots at -20°C. (Store no longer than 12 months at 4°C). Minimize freezing and thawing.

EB06633 - Goat Anti-Cytochrome b reductase 1 Antibody

Size: 100µg specific antibody in 200µl



Target Protein

Principal Names: ferric-chelate reductase 3, FRRS3, duodenal cytochrome b, cytochrome b reductase 1, FLJ23462, DCYTB, CYBRD1

Official Symbol: CYBRD1

Accession Number(s): NP_079119.3

Human GeneID(s): [79901](#)

Important Comments: This antibody is expected to recognise isoform 1 (NP_079119.3) only.

Immunogen

Peptide with sequence CRNLALDEAGQRSTM, from the C Terminus of the protein sequence according to NP_079119.3.

Please note the [peptide](#) is available for sale.

Purification and Storage

Purified from goat serum by ammonium sulphate precipitation followed by antigen affinity chromatography using the immunizing peptide.

Supplied at 0.5 mg/ml in Tris saline, 0.02% sodium azide, pH7.3 with 0.5% bovine serum albumin.

Aliquot and store at -20°C. Minimize freezing and thawing.

Applications Tested

Peptide ELISA: antibody detection limit dilution 1:16000.

Western blot: Experiments gave bands at approx 35kDa and a 26+28kDa doublet in human colon lysate after 0.1µg/ml antibody staining. Please note that currently we cannot find an explanation in the literature for the bands we observe given the calculated size of 31.6kDa according to NP_079119. The detected bands were all successfully blocked by incubation with the immunizing peptide (and BLAST results with the immunizing peptide sequence did not identify any other proteins to explain the additional bands). We would appreciate any feedback from people in the field - have any results been reported with other antibodies/lysates? Have any further splice variants/modified forms been reported?

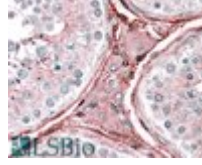
IHC: In paraffin embedded Human Testis shows membranous staining in primarily myofibroblasts of the basement membrane surrounding the seminiferous tubules.

Recommended concentration, 2-5µg/ml.

Species Reactivity

Tested: Human

Expected from sequence similarity: Human, Dog, Pig, Cow



EB06633 (2.5µg/ml) staining of paraffin embedded Human Testis. Steamed antigen retrieval with citrate buffer pH 6, AP-staining.