



UK Office

Everest Biotech Ltd

Cherwell Innovation Centre
77 Heyford Park
Upper Heyford
Oxfordshire
OX25 5HD
UK

Enquiries:

info@everestbiotech.com

Sales:

sales@everestbiotech.com

Tech support:

support@everestbiotech.com

Tel: +44 (0)1869 238326

Fax: +44 (0)1869 238327

US Office

Everest Biotech c/o Abcore

405 Maple Street, Suite A106
Ramona,
CA 92065
USA

Inquiries:

info@everestbiotech.com

Sales:

usasales@everestbiotech.com

Tech support:

support@everestbiotech.com

Tel: 888-320-4628 (toll-free)

Fax: 888-841-9041

www.everestbiotech.com

**Research Use Only. Not for
diagnostic or therapeutic use.**

EB11173 - Goat Anti-cytochrome P450 1A1 (mouse) Antibody

Size: 100µg specific antibody in 200µl



Target Protein

Principal Names: AHH, AHRR, aromatic compound inducible, CP11, Cyp1a2, CYP1A1, cytochrome P450 1A1, cytochrome P450 family 1 subfamily a polypeptide 2, cytochrome P450 subfamily I, polypeptide 1, cytochrome P450, 1a1, aromatic compound inducible, cytochrome P450, family 1, subfamily A, polypeptide 1, cytochrome P450-P1, P450-1, cyp1a1

Official Symbol: cyp1a1

Accession Number(s): NP_001129531.1

Non-Human GeneID(s): 13076 (mouse), 24296 (rat)

Important Comments: This antibody is not expected to cross-react with the similar P450 1A2

Immunogen

Peptide with sequence C-QDRKLDENANVQLSD, from the internal region of the protein sequence according to NP_001129531.1.

Please note the [peptide](#) is available for sale.

Purification and Storage

Purified from goat serum by ammonium sulphate precipitation followed by antigen affinity chromatography using the immunizing peptide.

Supplied at 0.5 mg/ml in Tris saline, 0.02% sodium azide, pH7.3 with 0.5% bovine serum albumin.

Aliquot and store at -20°C. Minimize freezing and thawing.

Applications Tested

Peptide ELISA: antibody detection limit dilution 1:64000.

Western blot: Approx 55kDa band observed in Human and Rat Lung lysates (calculated MW of 58.2kDa according to Human NP_000490.1 and 59.4kDa according to Rat NP_036672.). Primary incubation was 1 hour. Recommended concentration: 0.1-0.3µg/ml.

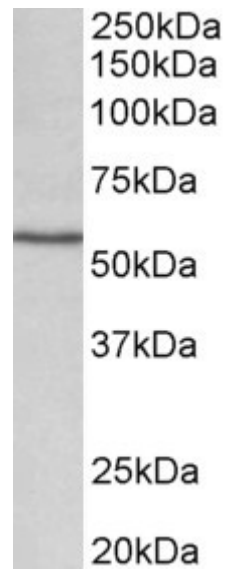
IHC: Paraffin embedded Human Tonsil. Recommended concentration: 10µg/ml.

Immunofluorescence: Strong expression of the protein seen in the ER and cytoplasm of NIH3T3 cells. Recommended concentration: 10µg/ml.

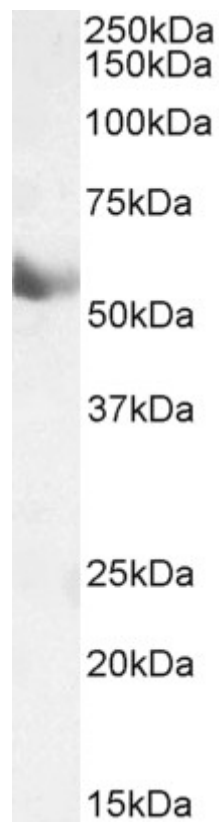
Species Reactivity

Tested: Human, Mouse, Rat

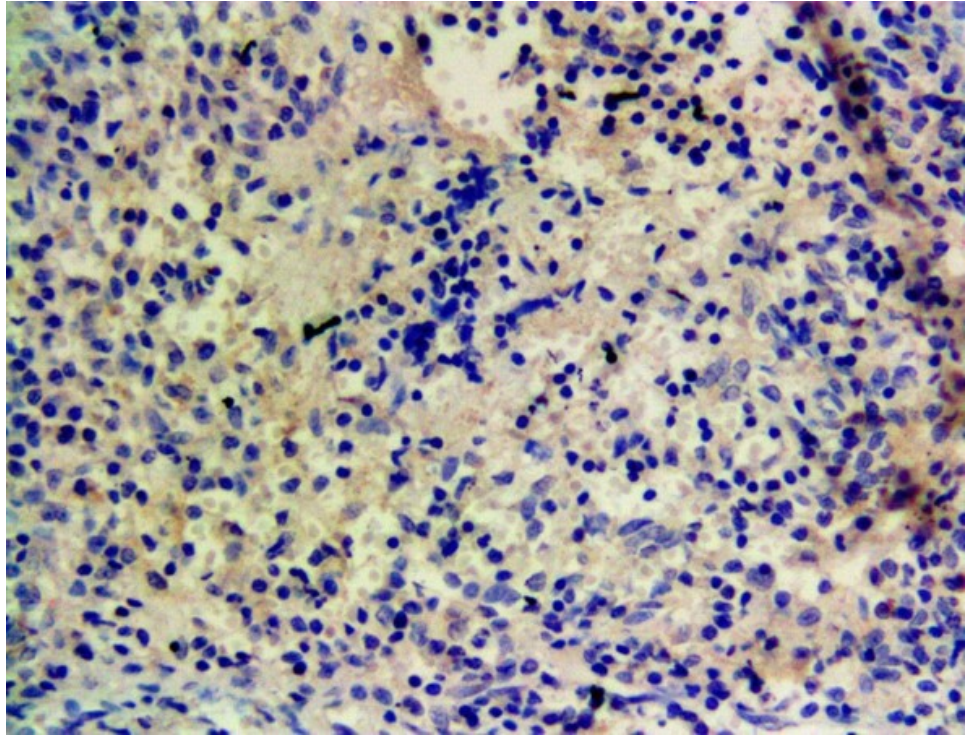
Expected from sequence similarity: Mouse, Rat



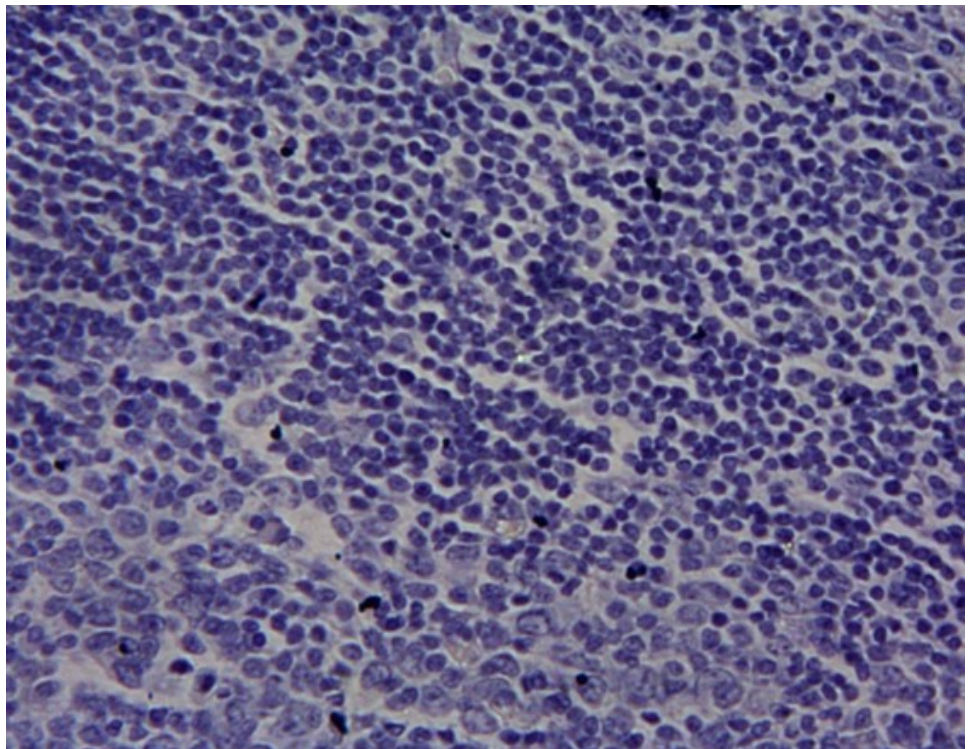
EB11173 (0.1µg/ml) staining of Rat Lung lysate (35µg protein in RIPA buffer). Detected by chemiluminescence.



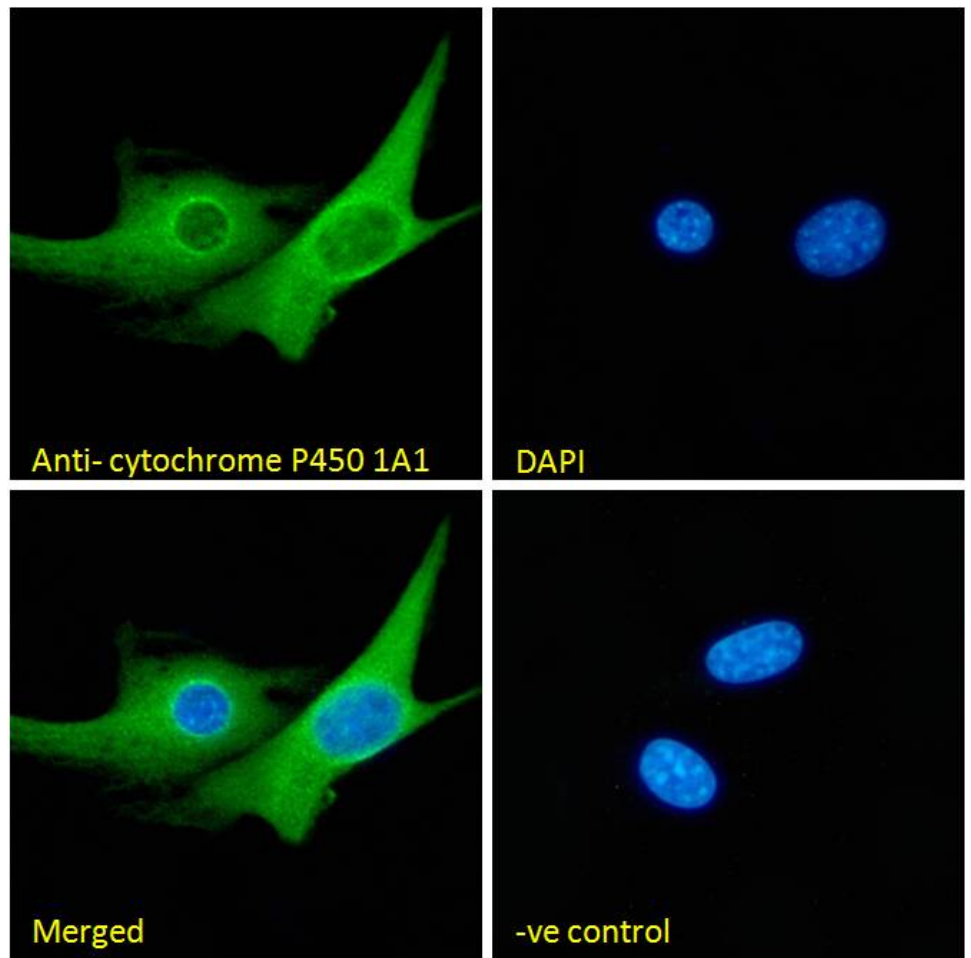
EB11173 (0.1µg/ml) staining of Human Lung lysate (35µg protein in RIPA buffer). Detected by chemiluminescence.



EB11173 Staining of paraffin embedded Human Tonsil. Heat induced antigen retrieval with Tris-EDTA pH 9, HRP-Staining (1:500)



EB11173 Negative Control showing staining of paraffin embedded Human Tonsil, with no primary antibody.



EB11173 Immunofluorescence analysis of paraformaldehyde fixed NIH3T3 cells, permeabilized with 0.15% Triton. Primary incubation 1hr (10ug/ml) followed by Alexa Fluor 488 secondary antibody (2ug/ml), showing endoplasmic reticulum and cytoplasmic staining. The nuclear stain is DAPI (blue). Negative control: Unimmunized goat IgG (10ug/ml) followed by Alexa Fluor 488 secondary antibody (2ug/ml).