



## UK Office

### Everest Biotech Ltd

Cherwell Innovation Centre  
77 Heyford Park  
Upper Heyford  
Oxfordshire  
OX25 5HD  
UK

Enquiries:

[info@everestbiotech.com](mailto:info@everestbiotech.com)

Sales:

[sales@everestbiotech.com](mailto:sales@everestbiotech.com)

Tech support:

[support@everestbiotech.com](mailto:support@everestbiotech.com)

Tel: +44 (0)1869 238326

Fax: +44 (0)1869 238327

## US Office

### Everest Biotech c/o Abcore

405 Maple Street, Suite A106  
Ramona,  
CA 92065  
USA

Inquiries:

[info@everestbiotech.com](mailto:info@everestbiotech.com)

Sales:

[usasales@everestbiotech.com](mailto:usasales@everestbiotech.com)

Tech support:

[support@everestbiotech.com](mailto:support@everestbiotech.com)

Tel: 888-320-4628 (toll-free)

Fax: 888-841-9041

[www.everestbiotech.com](http://www.everestbiotech.com)

**Research Use Only. Not for  
diagnostic or therapeutic use.**

## EB12359 - Goat Anti-cytokeratin 19 (aa285-298) Antibody

Size: 100µg specific antibody in 200µl



### Target Protein

**Principal Names:** KRT19, keratin 19, CK19, K19, K1CS, 40-kDa keratin intermediate filament, CK-19, cytokeratin 19, cytokeratin-19, keratin, type I cytoskeletal 19, keratin, type I, 40-kd, keratin-19

**Official Symbol:** KRT19

**Accession Number(s):** NP\_002267.2

**Human GeneID(s):** [3880](#)

### Immunogen

Peptide with sequence C-HTEQLQMSRSEVTD, from the internal region of the protein sequence according to NP\_002267.2.

Please note the [peptide](#) is available for sale.

### Purification and Storage

Purified from goat serum by ammonium sulphate precipitation followed by antigen affinity chromatography using the immunizing peptide.

Supplied at 0.5 mg/ml in Tris saline, 0.02% sodium azide, pH7.3 with 0.5% bovine serum albumin.

Aliquot and store at -20°C. Minimize freezing and thawing.

### Applications Tested

**Peptide ELISA:** antibody detection limit dilution 1:128000.

**Western blot:** Approx 43kDa band observed in Human cancer lysates of Breast, Pancreas and Colon (calculated MW of 44.1kDa according to NP\_002267.2).

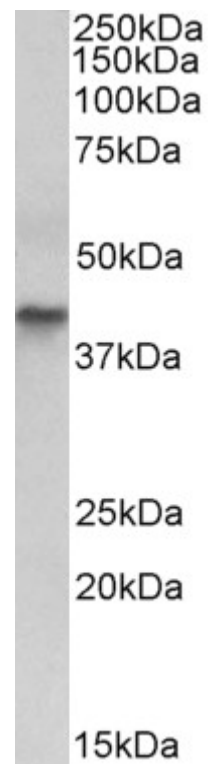
Recommended concentration: 0.03-0.1µg/ml. Primary incubation was 1 hour.

**IHC:** Paraffin embedded Human Liver. Recommended concentration: 2.5µg/ml.

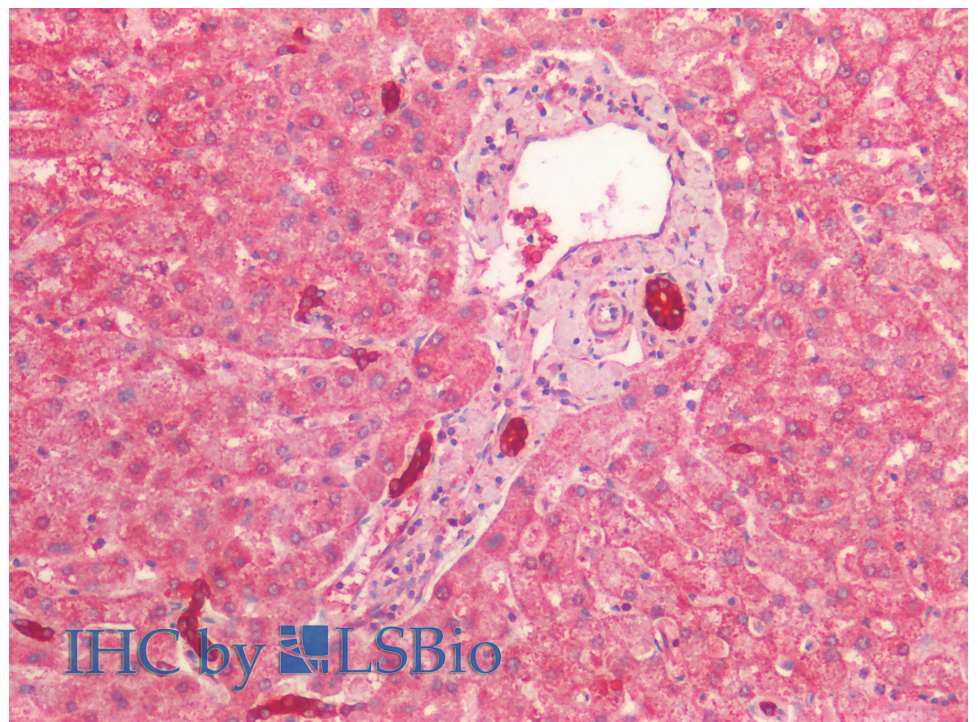
### Species Reactivity

**Tested:** Human

**Expected from sequence similarity:** Human



EB12359 (0.03 $\mu$ g/ml) staining of Human Colon cancer lysate (35 $\mu$ g protein in RIPA buffer). Detected by chemiluminescence.



EB12359 (2.5 $\mu$ g/ml) staining of paraffin embedded Human Liver. Steamed antigen retrieval with citrate buffer pH 6, AP-staining.