



UK Office

Everest Biotech Ltd

Cherwell Innovation Centre
77 Heyford Park
Upper Heyford
Oxfordshire
OX25 5HD
UK

Enquiries:

info@everestbiotech.com

Sales:

sales@everestbiotech.com

Tech support:

support@everestbiotech.com

Tel: +44 (0)1869 238326

www.everestbiotech.com

**Research Use Only. Not for
diagnostic or therapeutic use.**

EB11745-B - Goat Anti-Cytokeratin 20, Biotinylated Antibody

Size: 100µg specific antibody in 200µl



Target Protein

Principal Names: KRT20, keratin 20, type I, CK-20, CK20, K20, KRT21, cytokeratin 20, cytokeratin-20, keratin-20, protein IT, keratin, type I cytoskeletal 20

Official Symbol: KRT20

Accession Number(s): NP_061883.1

Human GeneID(s): [54474](#)

Immunogen

Peptide with sequence C-ETNAPRAGRDIS., from the internal region of the protein sequence according to NP_061883.1.

Please note the [peptide](#) is available for sale.

Purification and Storage

Purified from goat serum by ammonium sulphate precipitation followed by antigen affinity chromatography using the immunizing peptide.

Supplied at 0.5 mg/ml in Tris saline, 0.02% sodium azide, pH7.3 with 0.5% bovine serum albumin.

Aliquot and store at -20°C. Minimize freezing and thawing.

Applications Tested

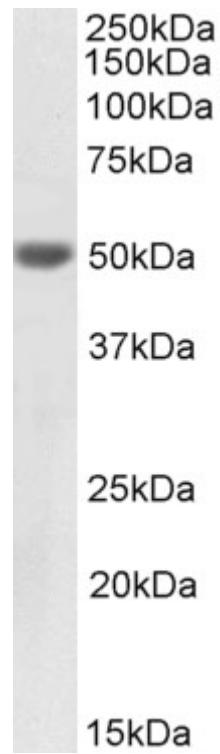
Peptide ELISA: antibody detection limit dilution 1:128000.

Western blot: Approx 49kDa band observed in Human Colon lysates (calculated MW of 48.5kDa according to NP_061883.1). See non-biotinylated parental product's datasheet for further QC data. Recommended concentration: 1-3µg/ml.

Species Reactivity

Tested: Human

Expected from sequence similarity: Human



Biotinylated EB11745 (1 μ g/ml) staining of Human Colon lysate (35 μ g protein in RIPA buffer), exactly mirroring its parental non-biotinylated product. Primary incubation was 1 hour. Detected by chemiluminescence, using streptavidin-HRP and using NAP blocker as a substitute for skimmed milk.