



## UK Office

### Everest Biotech Ltd

Cherwell Innovation Centre  
77 Heyford Park  
Upper Heyford  
Oxfordshire  
OX25 5HD  
UK

Enquiries:

[info@everestbiotech.com](mailto:info@everestbiotech.com)

Sales:

[sales@everestbiotech.com](mailto:sales@everestbiotech.com)

Tech support:

[support@everestbiotech.com](mailto:support@everestbiotech.com)

Tel: +44 (0)1869 238326

Fax: +44 (0)1869 238327

## US Office

### Everest Biotech c/o Abcore

405 Maple Street, Suite A106  
Ramona,  
CA 92065  
USA

Inquiries:

[info@everestbiotech.com](mailto:info@everestbiotech.com)

Sales:

[usasales@everestbiotech.com](mailto:usasales@everestbiotech.com)

Tech support:

[support@everestbiotech.com](mailto:support@everestbiotech.com)

Tel: 888-320-4628 (toll-free)

Fax: 888-841-9041

[www.everestbiotech.com](http://www.everestbiotech.com)

**Research Use Only. Not for  
diagnostic or therapeutic use.**

## EB08319 - Goat Anti-D-amino-acid oxidase Antibody

Size: 100µg specific antibody in 200µl



### Target Protein

**Principal Names:** DAO, D-amino-acid oxidase, DAAO, DAMOX, MGC35381, OXDA

**Official Symbol:** DAO

**Accession Number(s):** NP\_001908.3

**Human GeneID(s):** [1610](#)

### Immunogen

Peptide with sequence C-EEKKLSRMPPSH, from the C Terminus of the protein sequence according to NP\_001908.3.

Please note the [peptide](#) is available for sale.

### Purification and Storage

Purified from goat serum by ammonium sulphate precipitation followed by antigen affinity chromatography using the immunizing peptide.

Supplied at 0.5 mg/ml in Tris saline, 0.02% sodium azide, pH7.3 with 0.5% bovine serum albumin.

Aliquot and store at -20°C. Minimize freezing and thawing.

### Applications Tested

**Peptide ELISA:** antibody detection limit dilution 1:64000.

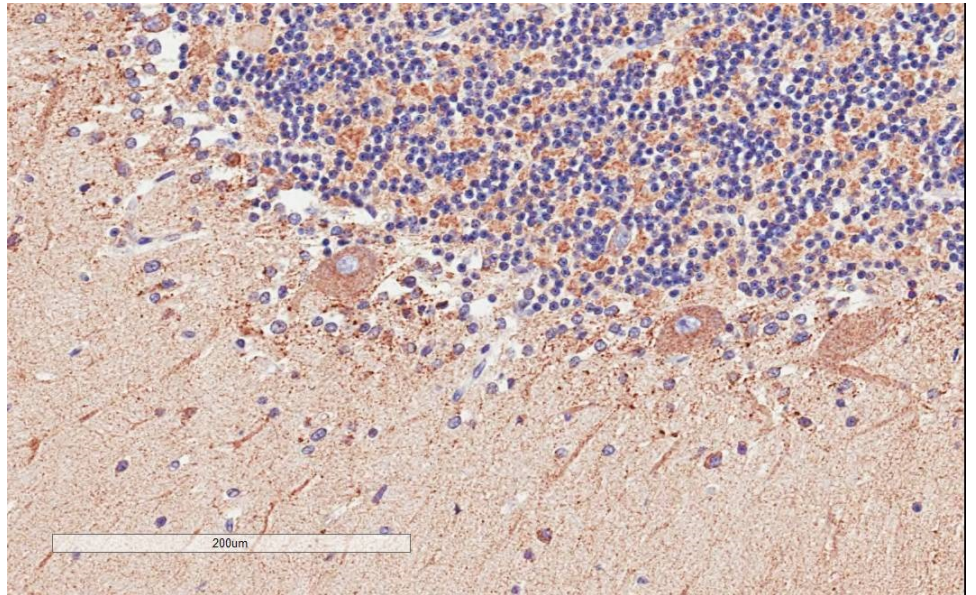
**Western blot:** Preliminary experiments in human brain (cerebellum, hippocampus, substantia nigra) lysates gave no specific signal but low background (at antibody concentration up to 1µg/ml).

**IHC:** In paraffin embedded Human Cerebellum shows pixulated cytoplasm staining in neurons directly near the granular layer. Recommended concentration: 2-4µg/ml.

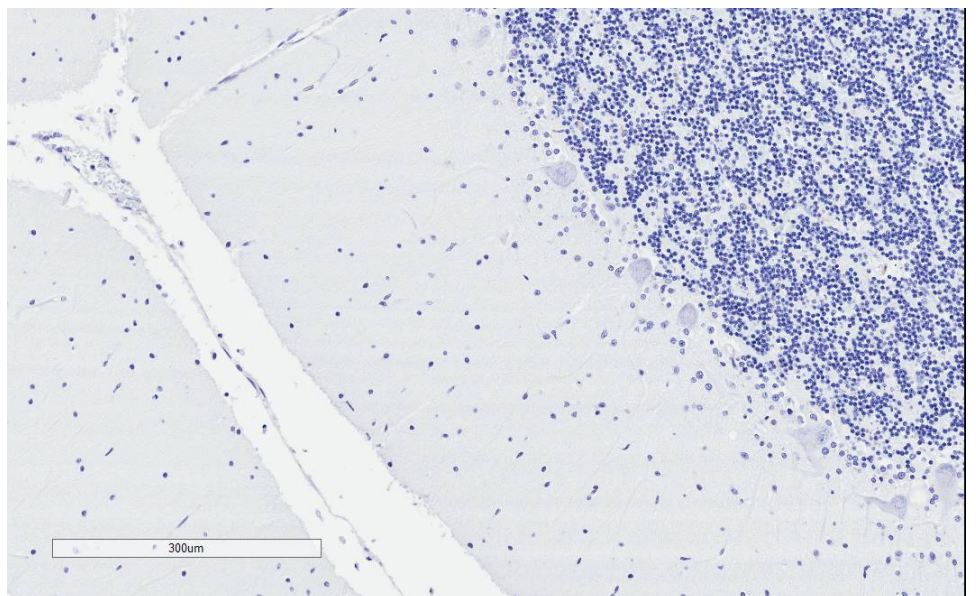
### Species Reactivity

**Tested:** Human

**Expected from sequence similarity:** Human, Rat, Mouse



EB08319 (2µg/ml) staining of paraffin embedded Human Cerebellum. Microwaved antigen retrieval with citrate buffer pH 6, HRP-staining.



EB08319 Negative Control showing staining of paraffin embedded Human Cerebellum, with no primary antibody.