



## UK Office

### Everest Biotech Ltd

Cherwell Innovation Centre  
77 Heyford Park  
Upper Heyford  
Oxfordshire  
OX25 5HD  
UK

Enquiries:

[info@everestbiotech.com](mailto:info@everestbiotech.com)

Sales:

[sales@everestbiotech.com](mailto:sales@everestbiotech.com)

Tech support:

[support@everestbiotech.com](mailto:support@everestbiotech.com)

Tel: +44 (0)1869 238326

Fax: +44 (0)1869 238327

## US Office

### Everest Biotech c/o Abcore

405 Maple Street, Suite A106  
Ramona,  
CA 92065  
USA

Inquiries:

[info@everestbiotech.com](mailto:info@everestbiotech.com)

Sales:

[usasales@everestbiotech.com](mailto:usasales@everestbiotech.com)

Tech support:

[support@everestbiotech.com](mailto:support@everestbiotech.com)

Tel: 888-320-4628 (toll-free)

Fax: 888-841-9041

[www.everestbiotech.com](http://www.everestbiotech.com)

**Research Use Only. Not for  
diagnostic or therapeutic use.**

## EB05427 - Goat Anti-DAP3 Antibody

Size: 100µg specific antibody in 200µl



### Target Protein

**Principal Names:** DAP3, death associated protein 3, DAP-3, DKFZp686G12159, MGC126058, MGC126059, MRP-S29, MRPS29, bMRP-10, death-associated protein 3, mitochondrial 28S ribosomal protein S29

**Official Symbol:** DAP3

**Accession Number(s):** NP\_387506.1; NP\_001186779.1; NP\_001186780.1

**Human GeneID(s):** [7818](#)

**Important Comments:** This antibody is expected to recognise isoform 1 (NP\_387506.1), isoform 2 (NP\_001186779.1) and isoform 3 (NP\_001186780.1). Reported variants represent identical protein (NP\_387506.1; NP\_004623.1; NP\_001186778.1).

### Immunogen

Peptide with sequence NPSLLERHCAYL, from the C Terminus of the protein sequence according to NP\_387506.1; NP\_001186779.1; NP\_001186780.1.

Please note the [peptide](#) is available for sale.

### Purification and Storage

Purified from goat serum by ammonium sulphate precipitation followed by antigen affinity chromatography using the immunizing peptide.

Supplied at 0.5 mg/ml in Tris saline, 0.02% sodium azide, pH7.3 with 0.5% bovine serum albumin.

Aliquot and store at -20°C. Minimize freezing and thawing.

### Applications Tested

**Peptide ELISA:** antibody detection limit dilution 1:64000.

**Western blot:** Approx 40kDa band observed in lysates of cell lines HeLa and HepG2 and in Human Kidney lysates (calculated MW of 41kDa according to NP\_001186779.1 and NP\_001186780). Recommended concentration: 0.1-1µg/ml. Primary incubated 1 hour at room temperature.

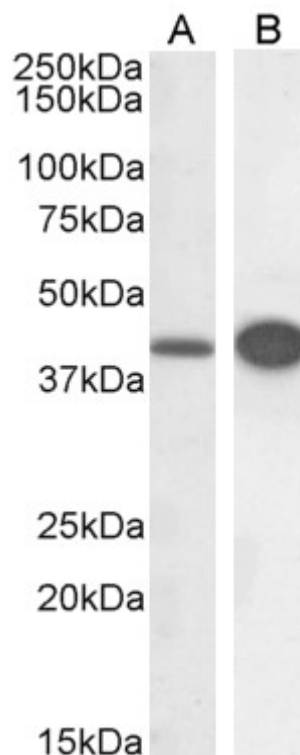
**IHC:** Paraffin embedded Human Kidney. Recommended concentration: 5µg/ml.

**Immunofluorescence:** Strong expression of the protein seen in the nuclei of MCF7 cells. Recommended concentration: 10µg/ml.

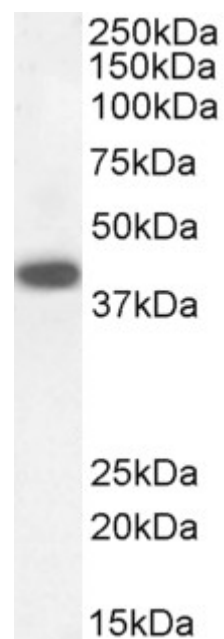
### Species Reactivity

**Tested:** Human

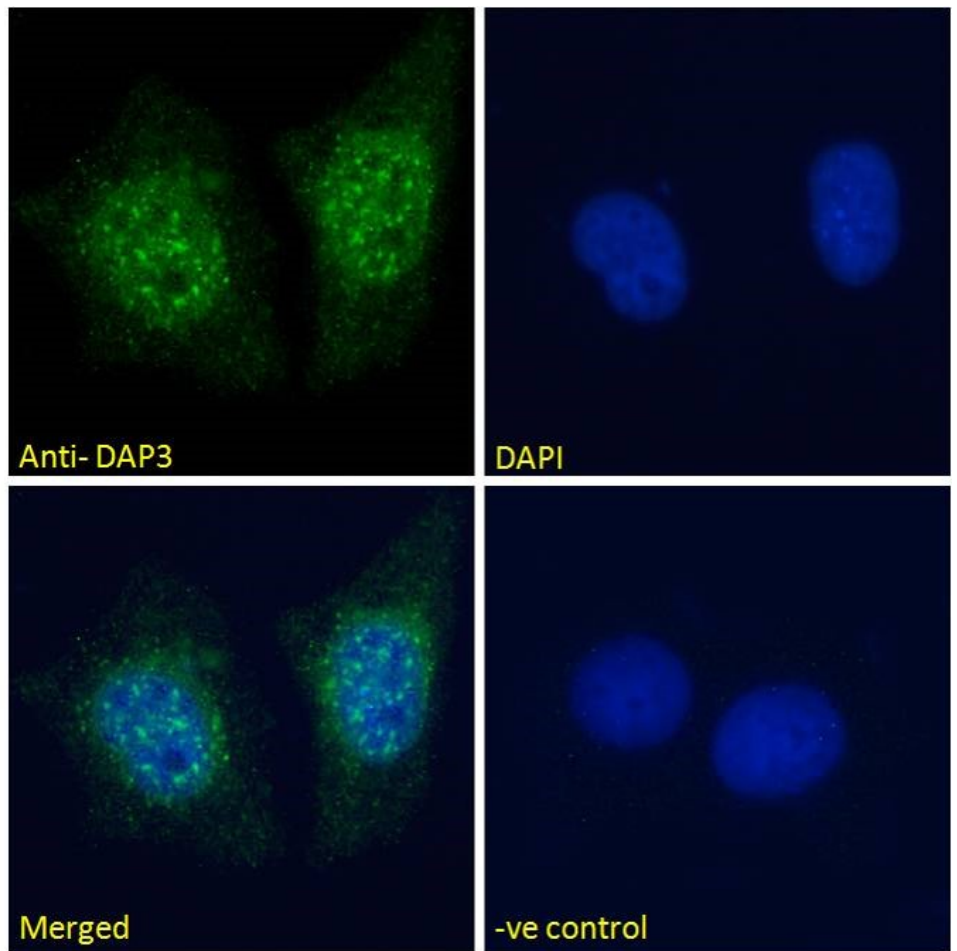
**Expected from sequence similarity:** Human



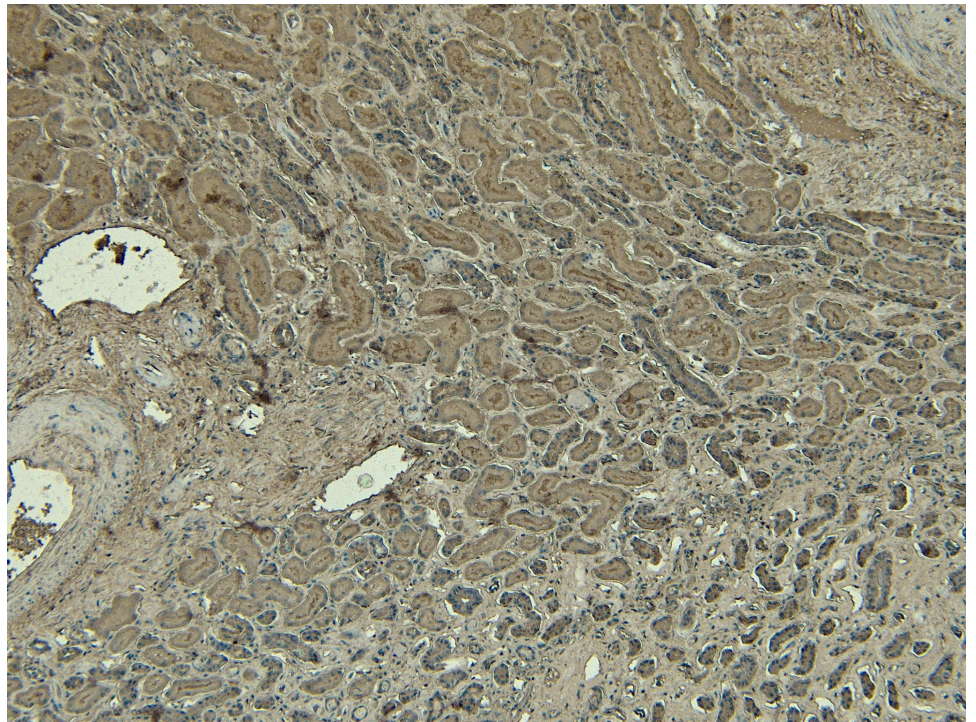
EB05427 (0.3 $\mu$ g/ml) staining of HeLa (A) and HepG2 (B) cell lysate (RIPA buffer, 30 $\mu$ g total protein per lane). Detected by chemiluminescence.



EB05427 staining (0.3 $\mu$ g/ml) of Human Kidney lysate (RIPA buffer, 30 $\mu$ g total protein per lane). Detected by chemiluminescence.

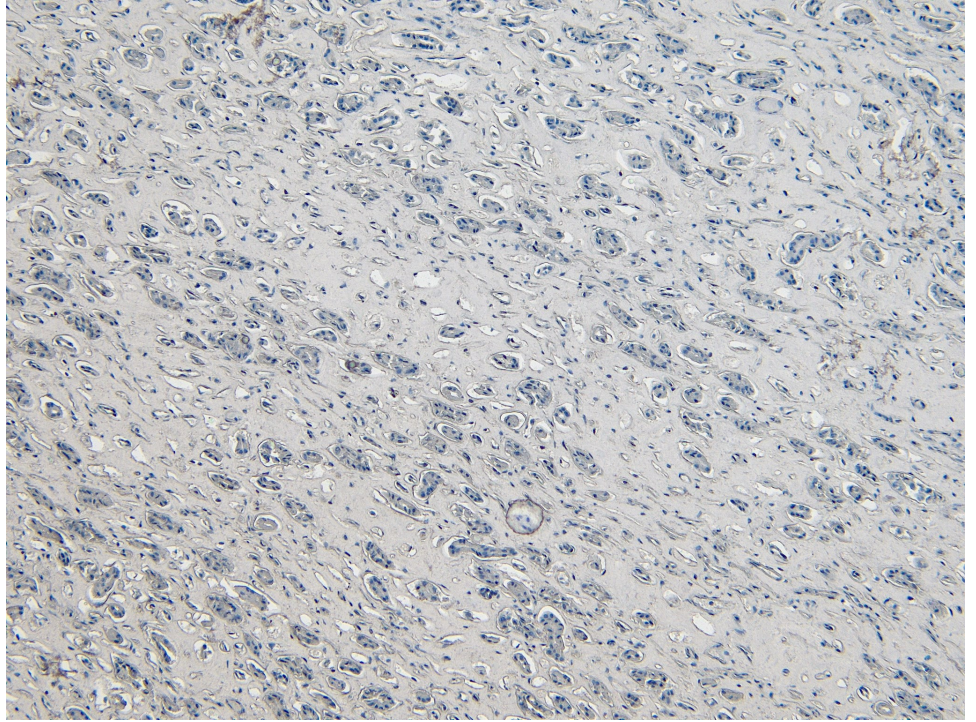


EB05427 Immunofluorescence analysis of paraformaldehyde fixed MCF7 cells, permeabilized with 0.15% Triton. Primary incubation 1hr (10ug/ml) followed by Alexa Fluor 488 secondary antibody (2ug/ml), showing nuclear staining. The nuclear stain is DAPI (blue). Negative control: Unimmunized goat IgG (10ug/ml) followed by Alexa Fluor 488 secondary antibody (2ug/ml).





EB05427 (5µg/ml) staining of paraffin embedded Human Kidney. Heat induced antigen retrieval with citrate buffer pH 6, HRP-staining.



EB05427 Negative Control showing staining of paraffin embedded Human Kidney, with no primary antibody.