



UK Office

Everest Biotech Ltd

Cherwell Innovation Centre
77 Heyford Park
Upper Heyford
Oxfordshire
OX25 5HD
UK

Enquiries:

info@everestbiotech.com

Sales:

sales@everestbiotech.com

Tech support:

support@everestbiotech.com

Tel: +44 (0)1869 238326

Fax: +44 (0)1869 238327

US Office

Everest Biotech c/o Abcore

405 Maple Street, Suite A106
Ramona,
CA 92065
USA

Inquiries:

info@everestbiotech.com

Sales:

usasales@everestbiotech.com

Tech support:

support@everestbiotech.com

Tel: 888-320-4628 (toll-free)

Fax: 888-841-9041

www.everestbiotech.com

**Research Use Only. Not for
diagnostic or therapeutic use.**

EB07900 - Goat Anti-DBP5 / DDX19 Antibody

Size: 100µg specific antibody in 200µl



Target Protein

Principal Names: DDX19, DBP5, DDX19B, DEAD (Asp-Glu-Ala-As) box polypeptide 19B, RNAh, ATP-dependent RNA helicase DDX19, DEAD (Asp-Glu-Ala-As) box polypeptide 19, DEAD-box RNA helicase DEAD5, DEAD-box protein 5, DEAD/H (Asp-Glu-Ala-Asp/His) box polypeptide 19, DEAD/H (Asp-Glu-Ala-Asp/His) box polypeptide 19 (Dbp5, yeast, homolog), yeast Dbp5 homolog

Official Symbol: DDX19B

Accession Number(s): NP_009173.1; NP_001014451.1; NP_001014449.1; NP_060802.1

Human GeneID(s): [11269](#) , [55308](#)

Non-Human GeneID(s): 234733 (mouse), 690693 (rat)

Important Comments: This antibody is expected to recognise DDX19A (NP_060802.1) and all reported isoforms of DDX19B (NP_009173.1, NP_001014451.1 and NP_001014449.1).

Immunogen

Peptide with sequence C-DLPVDKDGNDNETY, from the internal region of the protein sequence according to NP_009173.1; NP_001014451.1; NP_001014449.1; NP_060802.1.

Please note the [peptide](#) is available for sale.

Purification and Storage

Purified from goat serum by ammonium sulphate precipitation followed by antigen affinity chromatography using the immunizing peptide.

Supplied at 0.5 mg/ml in Tris saline, 0.02% sodium azide, pH7.3 with 0.5% bovine serum albumin.

Aliquot and store at -20°C. Minimize freezing and thawing.

Applications Tested

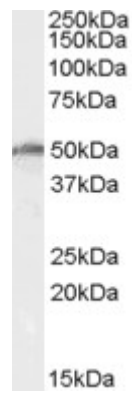
Peptide ELISA: antibody detection limit dilution 1:4000.

Western blot: Approx 50kDa band observed in lysates of human ovary and of cell line K562 (calculated MW of 50.5kDa according to NP_001014451.1). Recommended concentration: 0.5-1.5µg/ml.

Species Reactivity

Tested: Human

Expected from sequence similarity: Human, Mouse, Rat, Dog



EB07900 (0.5µg/ml) staining of K562 cell lysate (35µg protein in RIPA buffer). Primary incubation was 1 hour.
Detected by chemiluminescence.