

## UK Office

### Everest Biotech Ltd

Cherwell Innovation Centre  
77 Heyford Park  
Upper Heyford  
Oxfordshire  
OX25 5HD  
UK

Enquiries:

[info@everestbiotech.com](mailto:info@everestbiotech.com)

Sales:

[sales@everestbiotech.com](mailto:sales@everestbiotech.com)

Tech support:

[support@everestbiotech.com](mailto:support@everestbiotech.com)

Tel: +44 (0)1869 238326

Fax: +44 (0)1869 238327

## US Office

### Everest Biotech c/o Abcore

405 Maple Street, Suite A106  
Ramona,  
CA 92065  
USA

Inquiries:

[info@everestbiotech.com](mailto:info@everestbiotech.com)

Sales:

[usasales@everestbiotech.com](mailto:usasales@everestbiotech.com)

Tech support:

[support@everestbiotech.com](mailto:support@everestbiotech.com)

Tel: 888-320-4628 (toll-free)

Fax: 888-841-9041

[www.everestbiotech.com](http://www.everestbiotech.com)

**Research Use Only. Not for  
diagnostic or therapeutic use.**

## EB12715 - Goat Anti-DC-SIGN / CD209 Antibody

Size: 100µg specific antibody in 200µl



### Target Protein

**Principal Names:** CD209, CD209 molecule, CDSIGN, CLEC4L, DC-SIGN, DC-SIGN1, C-type lectin domain family 4 member L, C-type lectin domain family 4, member L, CD209 antigen, HIV gpl20-binding protein, dendritic cell-specific ICAM-3-grabbing non-integrin 1, dendritic cell-specific intracellular adhesion molecules (ICAM)-3 grabbing non-integrin

**Official Symbol:** CD209

**Accession Number(s):** NP\_066978.1; NP\_001138368.1; NP\_001138369.1; NP\_001138365.1; NP\_001138366.1; NP\_001138367.1; NP\_001138371.1

**Human GeneID(s):** [30835](#)

**Important Comments:** This antibody is expected to recognize all reported isoforms.

### Immunogen

Peptide with sequence C-NRGEPNNVGEED, from the internal region of the protein sequence according to NP\_066978.1; NP\_001138368.1; NP\_001138369.1; NP\_001138365.1; NP\_001138366.1; NP\_001138367.1; NP\_001138371.1.

Please note the [peptide](#) is available for sale.

### Purification and Storage

Purified from goat serum by ammonium sulphate precipitation followed by antigen affinity chromatography using the immunizing peptide.

Supplied at 0.5 mg/ml in Tris saline, 0.02% sodium azide, pH7.3 with 0.5% bovine serum albumin.

Aliquot and store at -20°C. Minimize freezing and thawing.

### Applications Tested

**Peptide ELISA:** antibody detection limit dilution 1:128000.

**Western blot:** Approx. 50kDa band observed in lysates of cell lines K562 and THP-1, and in preliminary testing of Human Lung and Testes lysate (calculated MW of 45.8kDa according to NP\_066978.1). This molecular weight is observed by other commercial sources, and was successfully blocked by incubation with the immunizing peptide. Recommended concentration: 1-3µg/ml. Primary incubation 1 hour at room temperature.

**Positive Control:** A batch specific positive control lysate is available for this product. Please contact [Sales@everestbiotech.com](mailto:Sales@everestbiotech.com) for availability.

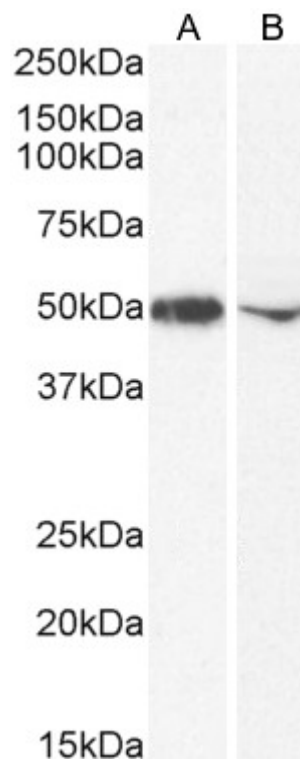
**IHC:** Paraffin embedded Human Placenta. Recommended concentration: 6µg/ml.

**Flow Cytometry:** Flow cytometric analysis of THP-1 cells. Recommended concentration: 10ug/ml.

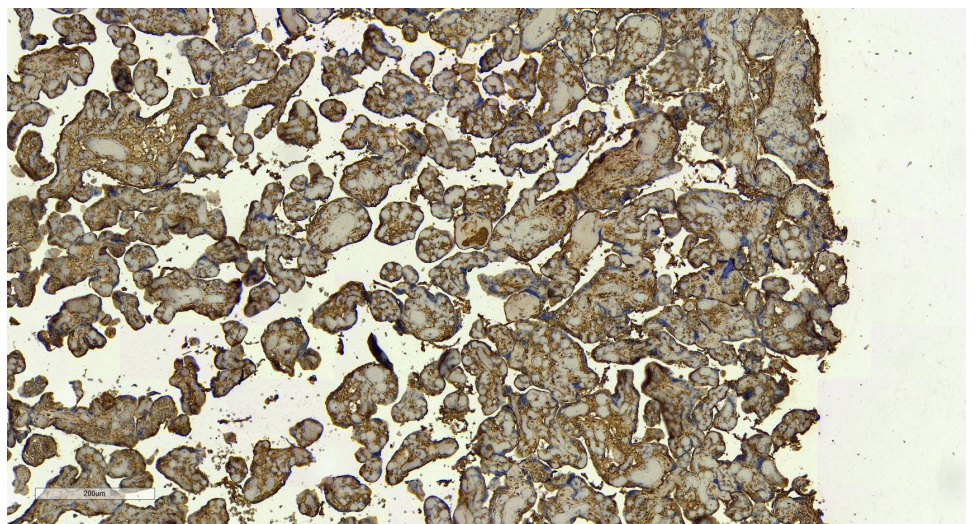
### Species Reactivity

**Tested:** Human

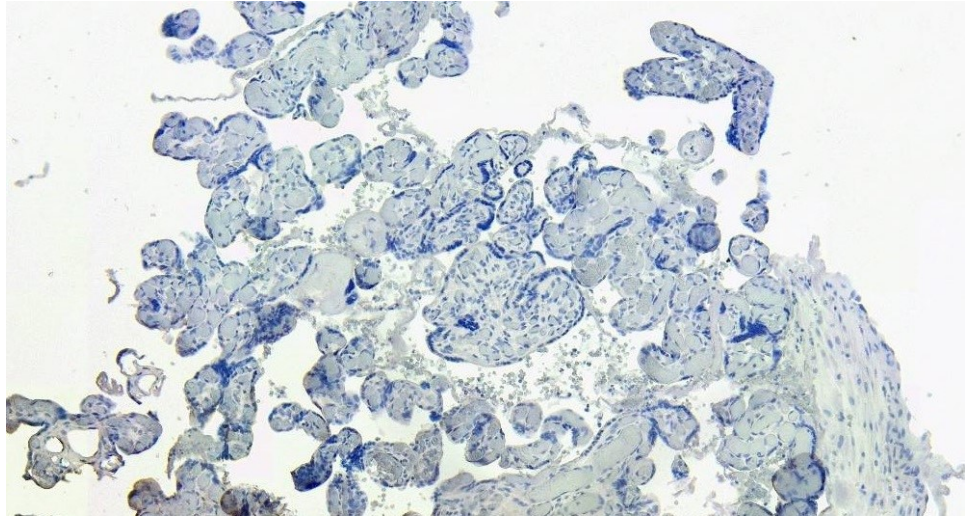
**Expected from sequence similarity:** Human



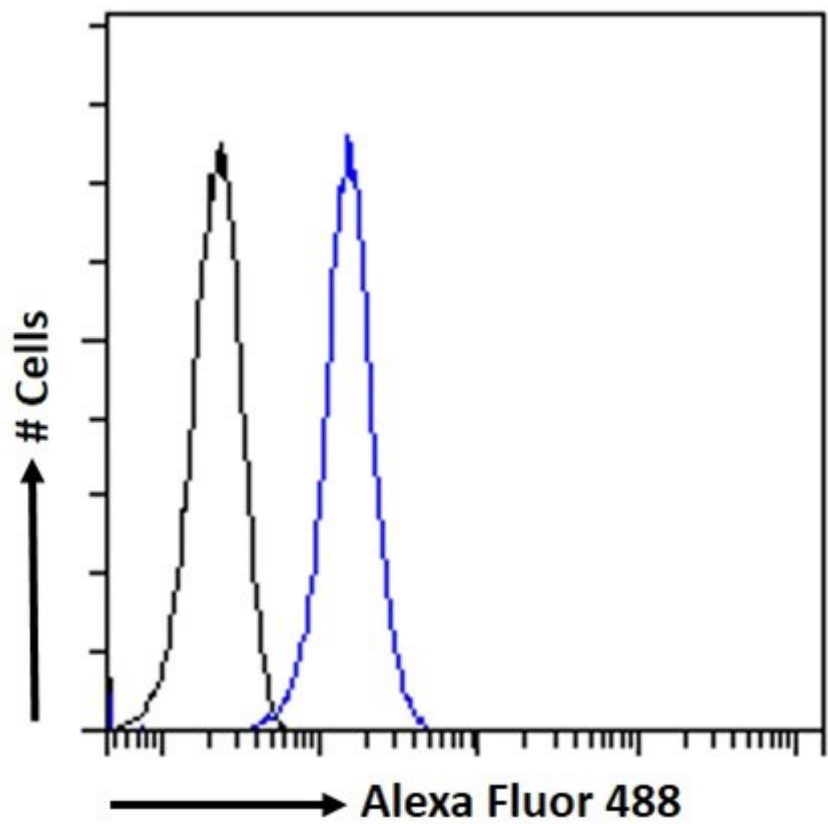
EB12715 (1 $\mu$ g/ml) staining of K562 (A) and (2 $\mu$ g/ml) THP-1 (B) cell lysate (35 $\mu$ g protein in RIPA buffer).  
Detected by chemiluminescence.



EB12715 (6 $\mu$ g/ml) staining of paraffin embedded Human Placenta. Heat induced antigen retrieval with citrate buffer pH 6, HRP-staining.



EB12715 Negative Control showing staining of paraffin embedded Human Placenta, with no primary antibody.



EB12715 Flow cytometric analysis of paraformaldehyde fixed THP1 cells (blue line), permeabilized with 0.5% Triton. Primary incubation 1hr (10ug/ml) followed by Alexa Fluor 488 secondary antibody (1ug/ml). IgG control: Unimmunized goat IgG (black line) followed by Alexa Fluor 488 secondary antibody.