



Everest Biotech Ltd  
Cherwell Innovation Centre  
77 Heyford Park  
Upper Heyford  
Oxfordshire  
OX25 5HD, United Kingdom

[everestbiotech.com](http://everestbiotech.com)

[sales@everestbiotech.com](mailto:sales@everestbiotech.com)

[support@everestbiotech.com](mailto:support@everestbiotech.com)

Tel +44 1869 238326

Fax +44 1869 238327

**Research Use Only. Not for diagnostic or therapeutic use.**

Storage: For long-term storage keep aliquots at -20°C. (Store no longer than 12 months at 4°C). Minimize freezing and thawing.

## EB07059 - Goat Anti-DCDC2 Antibody

Size: 100µg specific antibody in 200µl



### Target Protein

**Principal Names:** DCDC2A, RU2S, RU2, KIAA1154, HGNC:18141, doublecortin domain containing 2, DCDC2

**Official Symbol:** DCDC2

**Accession Number(s):** NP\_057440.2

**Human GeneID(s):** [51473](#)

### Immunogen

Peptide with sequence C-DGEEKANKDAEQKED, from the internal region of the protein sequence according to NP\_057440.2.

Please note the [peptide](#) is available for sale.

### Purification and Storage

Purified from goat serum by ammonium sulphate precipitation followed by antigen affinity chromatography using the immunizing peptide.

Supplied at 0.5 mg/ml in Tris saline, 0.02% sodium azide, pH7.3 with 0.5% bovine serum albumin.

Aliquot and store at -20°C. Minimize freezing and thawing.

### Applications Tested

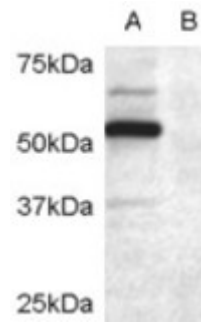
**Peptide ELISA:** antibody detection limit dilution 1:4000.

**Western blot:** Full length recombinant human DCDC2 expressed in COS7 (Lane A), non-transfectant COS7 (lane B). Approx 52kDa band observed (calculated MW of 52.8kDa according to NP\_057440.1). Data kindly provided by Wang and LoTurco, University of Connecticut, USA. Recommended concentration 0.1-0.3µg/ml.

### Species Reactivity

**Tested:** Human

**Expected from sequence similarity:** Human, Dog, Pig



EB07059 (0.2 $\mu$ g/ml) staining of COS7 cell lysate transfected with full length recombinant human DCDC2 (A) and untransfected control COS7 cells (B). Primary incubation was 1 hour. Detected by chemiluminescence.