



UK Office

Everest Biotech Ltd

Cherwell Innovation Centre
77 Heyford Park
Upper Heyford
Oxfordshire
OX25 5HD
UK

Enquiries:

info@everestbiotech.com

Sales:

sales@everestbiotech.com

Tech support:

support@everestbiotech.com

Tel: +44 (0)1869 238326

Fax: +44 (0)1869 238327

US Office

Everest Biotech c/o Abcore

405 Maple Street, Suite A106
Ramona,
CA 92065
USA

Inquiries:

info@everestbiotech.com

Sales:

usasales@everestbiotech.com

Tech support:

support@everestbiotech.com

Tel: 888-320-4628 (toll-free)

Fax: 888-841-9041

www.everestbiotech.com

**Research Use Only. Not for
diagnostic or therapeutic use.**

EB09461 - Goat Anti-Decorin Antibody

Size: 100µg specific antibody in 200µl



Target Protein

Principal Names: DCN, decorin, CSCD, DSPG2, PG40, PGII, PGS2, SLRR1B, bone proteoglycan II, decorin proteoglycan, dermatan sulphate proteoglycans II, proteoglycan core protein, small leucine-rich protein 1B

Official Symbol: DCN

Accession Number(s): NP_001911.1; NP_598011.1; NP_598012.1;

Human GeneID(s): [1634](#)

Important Comments: This antibody is expected to recognize the three reported isoforms a, b and c (NP_001911.1; NP_598011.1; NP_598012.1 resp.). Reported variants NP_598010.1 and NP_001911.1 represent identical protein.

Immunogen

Peptide with sequence C-KISRVDAASLKGLNN, from the internal region of the protein sequence according to NP_001911.1; NP_598011.1; NP_598012.1;.

Please note the [peptide](#) is available for sale.

Purification and Storage

Purified from goat serum by ammonium sulphate precipitation followed by antigen affinity chromatography using the immunizing peptide.

Supplied at 0.5 mg/ml in Tris saline, 0.02% sodium azide, pH7.3 with 0.5% bovine serum albumin.

Aliquot and store at -20°C. Minimize freezing and thawing.

Applications Tested

Peptide ELISA: antibody detection limit dilution 1:8000.

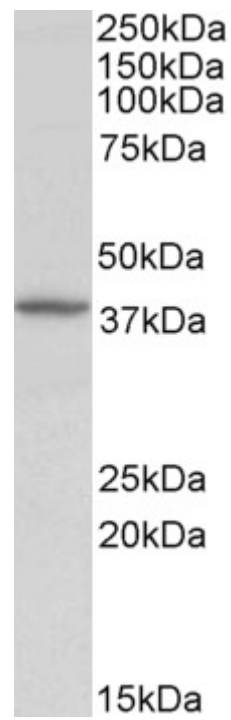
Western blot: Approx 38kDa band observed in Human Kidney lysates (calculated MW of 39.7kDa according to NP_001911.1). Recommended concentration: 0.5-2µg/ml. Primary incubation was 1 hour.

IHC: Paraffin embedded Human Breast. Recommended concentration: 3.75µg/ml.

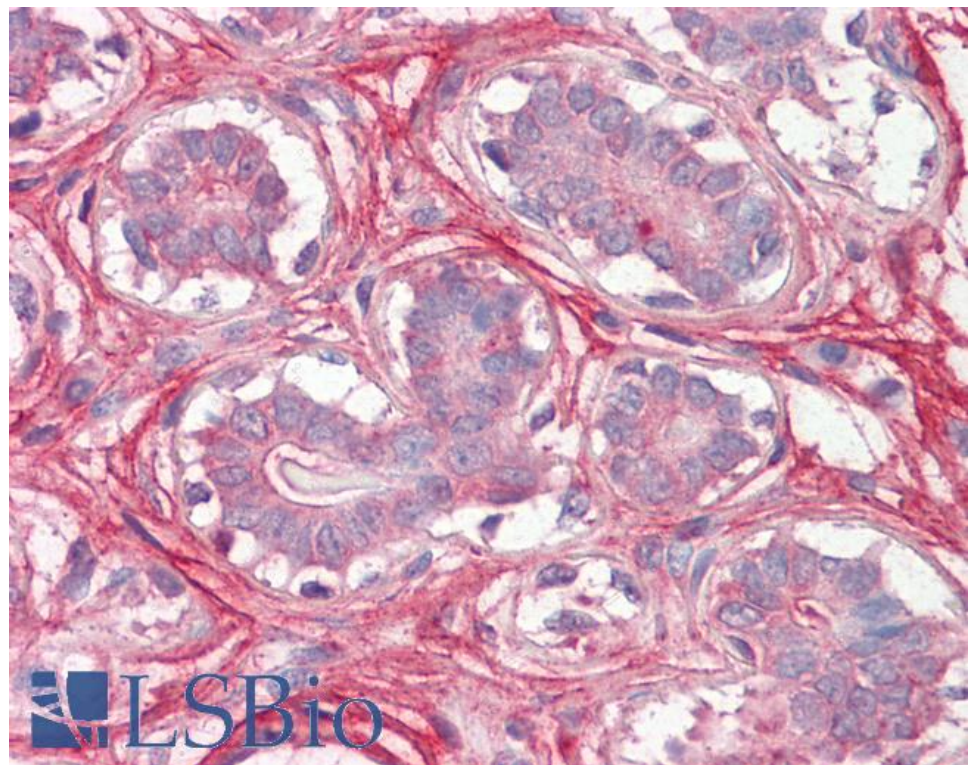
Species Reactivity

Tested: Human

Expected from sequence similarity: Human, Cow, Pig, Cavia



EB09461 (0.5 μ g/ml) staining of Human Kidney lysate (35 μ g protein in RIPA buffer). Detected by chemiluminescence.



EB09461 (3.75 μ g/ml) staining of paraffin embedded Human Breast. Steamed antigen retrieval with citrate buffer pH 6, AP-staining.