

## UK Office

### Everest Biotech Ltd

Cherwell Innovation Centre  
77 Heyford Park  
Upper Heyford  
Oxfordshire  
OX25 5HD  
UK

Enquiries:

[info@everestbiotech.com](mailto:info@everestbiotech.com)

Sales:

[sales@everestbiotech.com](mailto:sales@everestbiotech.com)

Tech support:

[support@everestbiotech.com](mailto:support@everestbiotech.com)

Tel: +44 (0)1869 238326

[www.everestbiotech.com](http://www.everestbiotech.com)

**Research Use Only. Not for  
diagnostic or therapeutic use.**

## EB09742 - Goat Anti-DEFA1/3 precursor Antibody

Size: 100µg specific antibody in 200µl



### Target Protein

**Principal Names:** DEFA1, defensin, alpha 1, myeloid-related sequence, HGNC:2761, DEF1, HNP-1, HP-1, MRS, defensin, alpha 1, myeloid-related sequence, DEFA3, defensin, alpha 3, neutrophil-specific, neutrophil peptide 3

**Official Symbol:** DEFA1

**Accession Number(s):** NP\_004075.1; NP\_005208.1

**Human GeneID(s):** [1667](#) , [1668](#)

**Important Comments:** This antibody is expected to equally recognize DEFA1 precursor and DEFA3 precursor.

### Immunogen

Peptide with sequence C-DESLAPKHPGSRKN, from the internal region of the protein sequence according to NP\_004075.1; NP\_005208.1.

Please note the [peptide](#) is available for sale.

### Purification and Storage

Purified from goat serum by ammonium sulphate precipitation followed by antigen affinity chromatography using the immunizing peptide.

Supplied at 0.5 mg/ml in Tris saline, 0.02% sodium azide, pH7.3 with 0.5% bovine serum albumin.

Aliquot and store at -20°C. Minimize freezing and thawing.

### Applications Tested

**Peptide ELISA:** antibody detection limit dilution 1:128000.

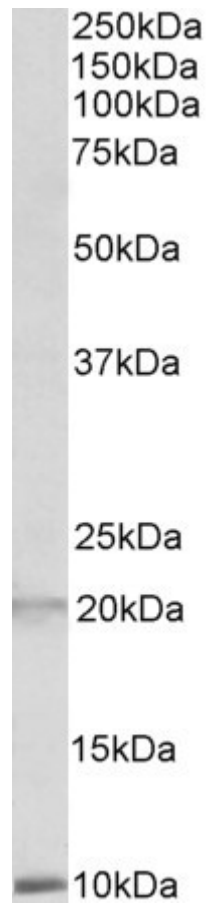
**Western blot:** Approx 10kDa band observed in Human Spleen lysates (calculated MW of 10.2kDa according to NP\_004075.1). An additional band of unknown identity was also consistently observed at 20kDa, and was successfully blocked by incubation with the immunizing peptide. Recommended concentration: 1-3µg/ml. Primary incubation 1 hour at room temperature.

**IHC:** Paraffin embedded Human Thymus. Recommended concentration: 3-6µg/ml.

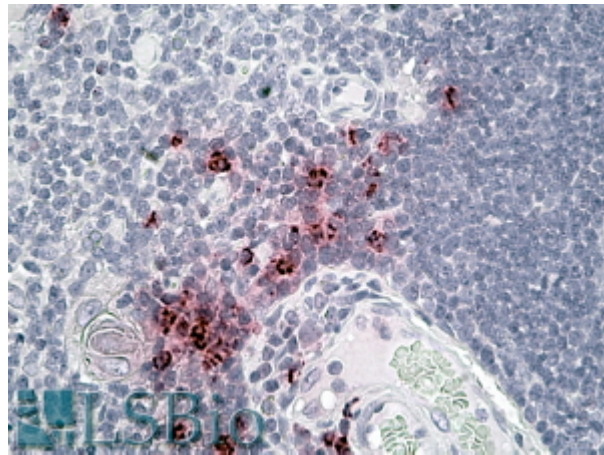
### Species Reactivity

**Tested:** Human

**Expected from sequence similarity:** Human



EB09742 (2 $\mu$ g/ml) staining of Human Spleen lysate (35 $\mu$ g protein in RIPA buffer). Detected by chemiluminescence.



EB09742 (3.8 $\mu$ g/ml) staining of paraffin embedded Human Thymus. Steamed antigen retrieval with citrate buffer pH 6, AP-staining.