



UK Office

Everest Biotech Ltd

Cherwell Innovation Centre
77 Heyford Park
Upper Heyford
Oxfordshire
OX25 5HD
UK

Enquiries:

info@everestbiotech.com

Sales:

sales@everestbiotech.com

Tech support:

support@everestbiotech.com

Tel: +44 (0)1869 238326

Fax: +44 (0)1869 238327

US Office

Everest Biotech c/o Abcore

405 Maple Street, Suite A106
Ramona,
CA 92065
USA

Inquiries:

info@everestbiotech.com

Sales:

usasales@everestbiotech.com

Tech support:

support@everestbiotech.com

Tel: 888-320-4628 (toll-free)

Fax: 888-841-9041

www.everestbiotech.com

**Research Use Only. Not for
diagnostic or therapeutic use.**

EB09742 - Goat Anti-DEFA1/3 precursor Antibody

Size: 100µg specific antibody in 200µl



Target Protein

Principal Names: DEFA1, defensin, alpha 1, myeloid-related sequence, HGNC:2761, DEF1, HNP-1, HP-1, MRS, defensin, alpha 1, myeloid-related sequence, DEFA3, defensin, alpha 3, neutrophil-specific, neutrophil peptide 3

Official Symbol: DEFA1

Accession Number(s): NP_004075.1; NP_005208.1

Human GeneID(s): [1667](#) , [1668](#)

Important Comments: This antibody is expected to equally recognize DEFA1 precursor and DEFA3 precursor.

Immunogen

Peptide with sequence C-DESLAPKHPGSRKN, from the internal region of the protein sequence according to NP_004075.1; NP_005208.1.

Please note the [peptide](#) is available for sale.

Purification and Storage

Purified from goat serum by ammonium sulphate precipitation followed by antigen affinity chromatography using the immunizing peptide.

Supplied at 0.5 mg/ml in Tris saline, 0.02% sodium azide, pH7.3 with 0.5% bovine serum albumin.

Aliquot and store at -20°C. Minimize freezing and thawing.

Applications Tested

Peptide ELISA: antibody detection limit dilution 1:128000.

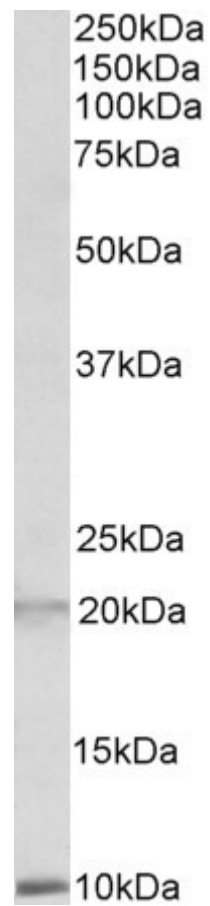
Western blot: Approx 10kDa band observed in Human Spleen lysates (calculated MW of 10.2kDa according to NP_004075.1). An additional band of unknown identity was also consistently observed at 20kDa, and was successfully blocked by incubation with the immunizing peptide. Recommended concentration: 1-3µg/ml. Primary incubation 1 hour at room temperature.

IHC: Paraffin embedded Human Thymus. Recommended concentration: 3-6µg/ml.

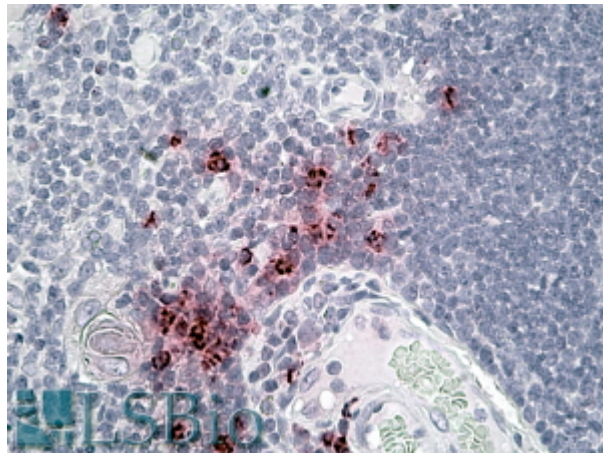
Species Reactivity

Tested: Human

Expected from sequence similarity: Human



EB09742 (2 μ g/ml) staining of Human Spleen lysate (35 μ g protein in RIPA buffer). Detected by chemiluminescence.



EB09742 (3.8 μ g/ml) staining of paraffin embedded Human Thymus. Steamed antigen retrieval with citrate buffer pH 6, AP-staining.