



UK Office

Everest Biotech Ltd

Cherwell Innovation Centre
77 Heyford Park
Upper Heyford
Oxfordshire
OX25 5HD
UK

Enquiries:

info@everestbiotech.com

Sales:

sales@everestbiotech.com

Tech support:

support@everestbiotech.com

Tel: +44 (0)1869 238326

www.everestbiotech.com

**Research Use Only. Not for
diagnostic or therapeutic use.**

EB10758 - Goat Anti-Delta-Sarcoglycan (aa245-257) Antibody

Size: 100µg specific antibody in 200µl



Target Protein

Principal Names: SGCD, sarcoglycan, delta (35kDa dystrophin-associated glycoprotein), 35DAG, CMD1L, DAGD, MGC22567, SG-delta, SGCDP, SGD, 35kD

dystrophin-associated glycoprotein, delta-SG, delta-sarcoglycan, dystrophin associated

Official Symbol: SGCD

Accession Number(s): NP_000328.2; NP_758447.1; NP_001121681.1

Human GeneID(s): [6444](#)

Non-Human GeneID(s): 24052 (mouse), 497892 (rat)

Important Comments: This antibody is expected to recognize isoform 1 (NP_000328.2) and isoform 3 (NP_001121681.1).

Immunogen

Peptide with sequence C-RLPHGSYTPTGTR, from the internal region of the protein sequence according to NP_000328.2; NP_758447.1; NP_001121681.1.

Please note the [peptide](#) is available for sale.

Purification and Storage

Purified from goat serum by ammonium sulphate precipitation followed by antigen affinity chromatography using the immunizing peptide.

Supplied at 0.5 mg/ml in Tris saline, 0.02% sodium azide, pH7.3 with 0.5% bovine serum albumin.

Aliquot and store at -20°C. Minimize freezing and thawing.

Applications Tested

Peptide ELISA: antibody detection limit dilution 1:16000.

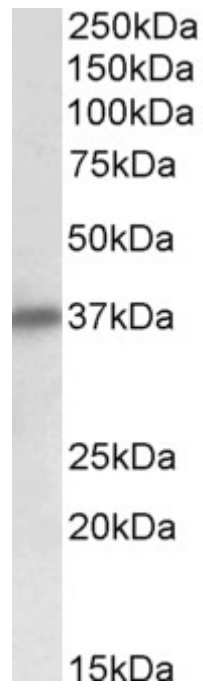
Western blot: Approx 37kDa band observed in Human and Rat Heart lysates (calculated MW of 32.2kDa according to NP_000328.2). The observed molecular weight corresponds to the glycosylated form. Recommended concentration: 0.1-0.3µg/ml.

IHC: In paraffin embedded Human Skeletal Muscle shows sarcolemmar staining of the fibres. Recommended concentration, 3-5µg/ml.

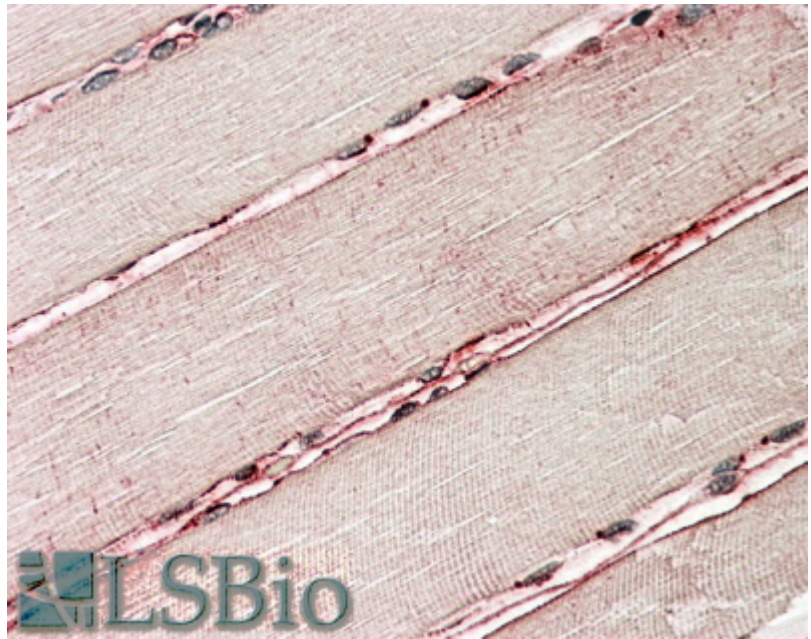
Species Reactivity

Tested: Human, Rat

Expected from sequence similarity: Human, Mouse, Rat, Dog, Pig, Cow



EB10758 (0.1 μ g/ml) staining of Human Heart lysate (35 μ g protein in RIPA buffer). Primary incubation was 1 hour. Detected by chemiluminescence.



EB10758 (3.8 μ g/ml) staining of paraffin embedded Human Skeletal Muscle. Steamed antigen retrieval with citrate buffer pH 6, AP-staining.