



## UK Office

### Everest Biotech Ltd

Cherwell Innovation Centre  
77 Heyford Park  
Upper Heyford  
Oxfordshire  
OX25 5HD  
UK

Enquiries:

[info@everestbiotech.com](mailto:info@everestbiotech.com)

Sales:

[sales@everestbiotech.com](mailto:sales@everestbiotech.com)

Tech support:

[support@everestbiotech.com](mailto:support@everestbiotech.com)

Tel: +44 (0)1869 238326

Fax: +44 (0)1869 238327

## US Office

### Everest Biotech c/o Abcore

405 Maple Street, Suite A106  
Ramona,  
CA 92065  
USA

Inquiries:

[info@everestbiotech.com](mailto:info@everestbiotech.com)

Sales:

[usasales@everestbiotech.com](mailto:usasales@everestbiotech.com)

Tech support:

[support@everestbiotech.com](mailto:support@everestbiotech.com)

Tel: 888-320-4628 (toll-free)

Fax: 888-841-9041

[www.everestbiotech.com](http://www.everestbiotech.com)

**Research Use Only. Not for  
diagnostic or therapeutic use.**

## EB10758 - Goat Anti-Delta-Sarcoglycan (aa245-257) Antibody

Size: 100µg specific antibody in 200µl



### Target Protein

**Principal Names:** SGCD, sarcoglycan, delta (35kDa dystrophin-associated glycoprotein), 35DAG, CMD1L, DAGD, MGC22567, SG-delta, SGCDP, SGD, 35kD

dystrophin-associated glycoprotein, delta-SG, delta-sarcoglycan, dystrophin associated

**Official Symbol:** SGCD

**Accession Number(s):** NP\_000328.2; NP\_758447.1; NP\_001121681.1

**Human GeneID(s):** [6444](#)

**Non-Human GeneID(s):** 24052 (mouse), 497892 (rat)

**Important Comments:** This antibody is expected to recognize isoform 1 (NP\_000328.2) and isoform 3 (NP\_001121681.1).

### Immunogen

Peptide with sequence C-RLPHGSYTPTGTR, from the internal region of the protein sequence according to NP\_000328.2; NP\_758447.1; NP\_001121681.1.

Please note the [peptide](#) is available for sale.

### Purification and Storage

Purified from goat serum by ammonium sulphate precipitation followed by antigen affinity chromatography using the immunizing peptide.

Supplied at 0.5 mg/ml in Tris saline, 0.02% sodium azide, pH7.3 with 0.5% bovine serum albumin.

Aliquot and store at -20°C. Minimize freezing and thawing.

### Applications Tested

**Peptide ELISA:** antibody detection limit dilution 1:16000.

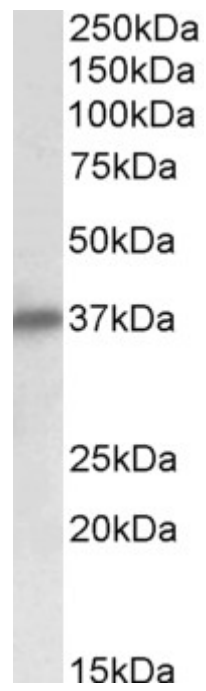
**Western blot:** Approx 37kDa band observed in Human and Rat Heart lysates (calculated MW of 32.2kDa according to NP\_000328.2). The observed molecular weight corresponds to the glycosylated form. Recommended concentration: 0.1-0.3µg/ml.

**IHC:** In paraffin embedded Human Skeletal Muscle shows sarcolemmar staining of the fibres. Recommended concentration, 3-5µg/ml.

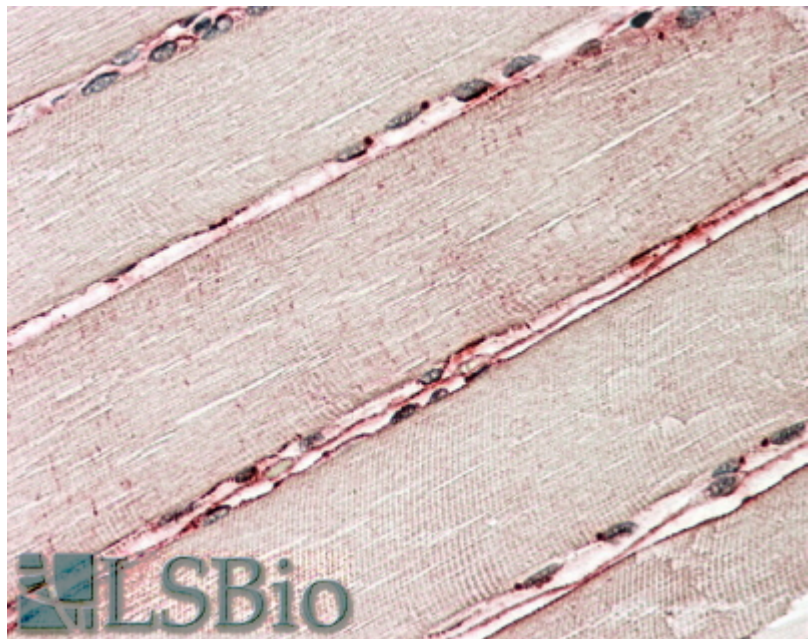
### Species Reactivity

**Tested:** Human, Rat

**Expected from sequence similarity:** Human, Mouse, Rat, Dog, Pig, Cow



EB10758 (0.1µg/ml) staining of Human Heart lysate (35µg protein in RIPA buffer). Primary incubation was 1 hour. Detected by chemiluminescence.



EB10758 (3.8µg/ml) staining of paraffin embedded Human Skeletal Muscle. Steamed antigen retrieval with citrate buffer pH 6, AP-staining.