



UK Office

Everest Biotech Ltd

Cherwell Innovation Centre
77 Heyford Park
Upper Heyford
Oxfordshire
OX25 5HD
UK

Enquiries:

info@everestbiotech.com

Sales:

sales@everestbiotech.com

Tech support:

support@everestbiotech.com

Tel: +44 (0)1869 238326

Fax: +44 (0)1869 238327

US Office

Everest Biotech c/o Abcore

405 Maple Street, Suite A106
Ramona,
CA 92065
USA

Inquiries:

info@everestbiotech.com

Sales:

usasales@everestbiotech.com

Tech support:

support@everestbiotech.com

Tel: 888-320-4628 (toll-free)

Fax: 888-841-9041

www.everestbiotech.com

**Research Use Only. Not for
diagnostic or therapeutic use.**

EB09106 - Goat Anti-Desmin Antibody

Size: 100µg specific antibody in 200µl



Target Protein

Principal Names: DES, desmin, CMD1I, CSM1, CSM2, FLJ12025, FLJ39719, FLJ41013, FLJ41793, intermediate filament protein

Official Symbol: DES

Accession Number(s): NP_001918.3

Human GeneID(s): [1674](#)

Non-Human GeneID(s): 13346 (mouse), 64362 (rat)

Immunogen

Peptide with sequence C-RDGEVVSEATQQQHE, from the C Terminus of the protein sequence according to NP_001918.3.

Please note the [peptide](#) is available for sale.

Purification and Storage

Purified from goat serum by ammonium sulphate precipitation followed by antigen affinity chromatography using the immunizing peptide.

Supplied at 0.5 mg/ml in Tris saline, 0.02% sodium azide, pH7.3 with 0.5% bovine serum albumin.

Aliquot and store at -20°C. Minimize freezing and thawing.

Applications Tested

Peptide ELISA: antibody detection limit dilution 1:128000.

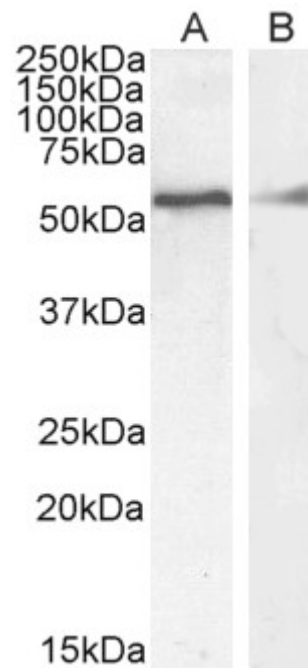
Western blot: Approx. 55-60kDa band observed in Human and Mouse Skeletal Muscle lysates and in Human Heart lysates (calculated MW of 53.5kDa according to Human NP_001918.3, and Mouse NP_034173.1). Preliminary testing showed a band at approx 60kDa in Rat and Pig Skeletal muscle lysate. Recommended concentration: 0.01-0.3µg/ml. Primary incubation 1 hour at room temperature.

IHC: Paraffin embedded Human Heart. Recommended concentration: 4-6µg/ml.

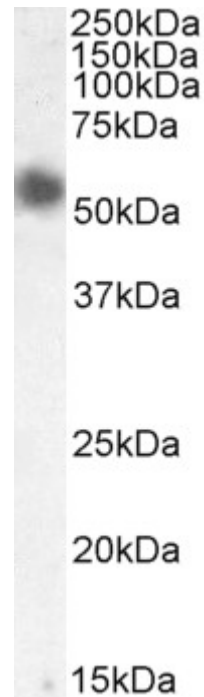
Species Reactivity

Tested: Human, Mouse

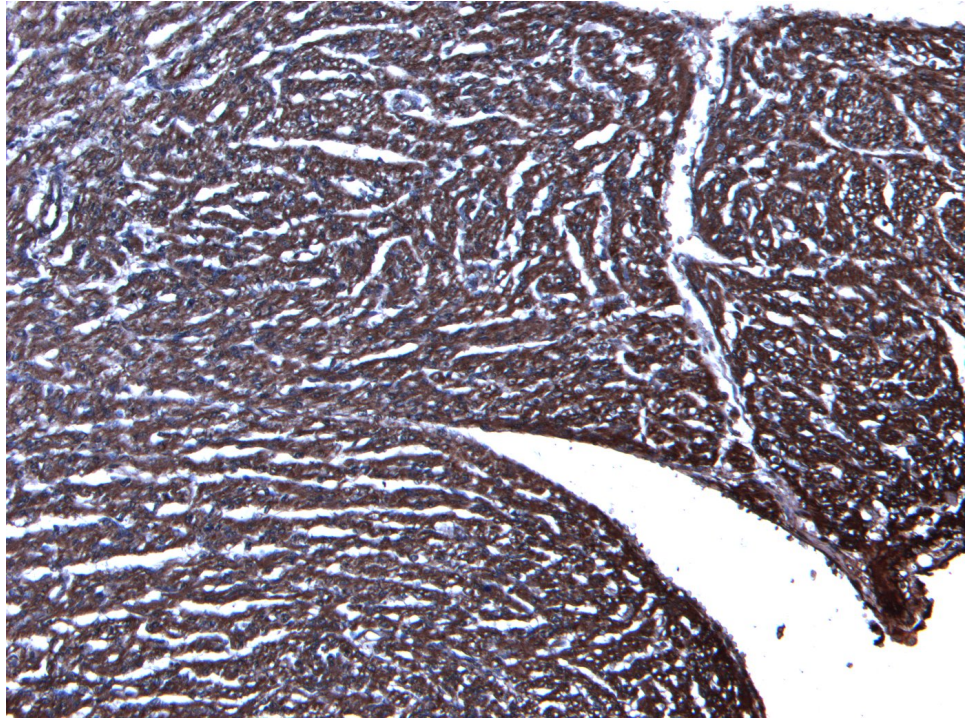
Expected from sequence similarity: Human, Mouse, Dog, Cow



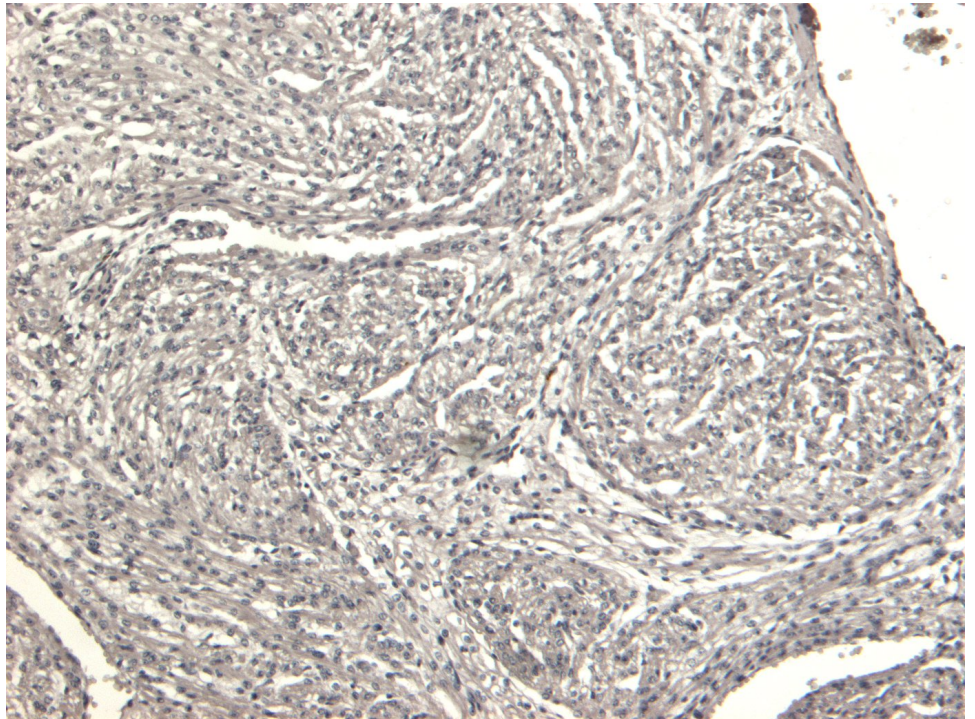
EB09106 (0.01 μ g/ml) staining of Human Skeletal Muscle (A) and (0.3 μ g/ml) Heart (B) lysate (35 μ g protein in RIPA buffer). Detected by chemiluminescence.



EB09106 (0.1 μ g/ml) staining of Mouse Skeletal Muscle lysate (35 μ g protein in RIPA buffer). Detected by chemiluminescence.



EB09106 (6µg/ml) staining of paraffin embedded Human Heart. Heat induced antigen retrieval with citrate buffer pH 6, HRP-staining.



EB09106 Negative Control showing staining of paraffin embedded Human Heart, with no primary antibody.