



UK Office

Everest Biotech Ltd

Cherwell Innovation Centre
77 Heyford Park
Upper Heyford
Oxfordshire
OX25 5HD
UK

Enquiries:

info@everestbiotech.com

Sales:

sales@everestbiotech.com

Tech support:

support@everestbiotech.com

Tel: +44 (0)1869 238326

Fax: +44 (0)1869 238327

US Office

Everest Biotech c/o Abcore

405 Maple Street, Suite A106
Ramona,
CA 92065
USA

Inquiries:

info@everestbiotech.com

Sales:

usasales@everestbiotech.com

Tech support:

support@everestbiotech.com

Tel: 888-320-4628 (toll-free)

Fax: 888-841-9041

www.everestbiotech.com

**Research Use Only. Not for
diagnostic or therapeutic use.**

EB09297 - Goat Anti-DHX9 / RHA Antibody

Size: 100µg specific antibody in 200µl



Target Protein

Principal Names: DHX9, DEAH (Asp-Glu-Ala-His) box polypeptide 9, DDX9, LKP, NDHII, RHA, ATP-dependent RNA helicase A, DEAD/H (Asp-Glu-Ala-Asp/His) box polypeptide 9 (RNA helicase A), DEAD/H (Asp-Glu-Ala-Asp/His) box polypeptide 9 (RNA helicase A, nuclear DNA helicase II, leukophysin), DEAD/H box-9 (nuclear DNA helicase II, RNA helicase A), OTTHUMP00000033287, leukophysin

Official Symbol: DHX9

Accession Number(s): NP_001348.2

Human GeneID(s): [1660](#)

Non-Human GeneID(s): 13211 (mouse), 304859 (rat)

Immunogen

Peptide with sequence TEGRNALIHKSSVNC, from the internal region of the protein sequence according to NP_001348.2.

Please note the [peptide](#) is available for sale.

Purification and Storage

Purified from goat serum by ammonium sulphate precipitation followed by antigen affinity chromatography using the immunizing peptide.

Supplied at 0.5 mg/ml in Tris saline, 0.02% sodium azide, pH7.3 with 0.5% bovine serum albumin.

Aliquot and store at -20°C. Minimize freezing and thawing.

Applications Tested

Peptide ELISA: antibody detection limit dilution 1:16000.

Western blot: Approx. 140kDa band observed in nuclear lysates of cell line HeLa (calculated MW of 141kDa according to NP_001348.2). Recommended concentration: 1-3µg/ml. Primary incubation was 1 hour.

Species Reactivity

Tested: Human

Expected from sequence similarity: Human, Mouse, Rat, Cow

Specific Reference

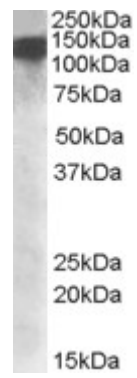
This antibody has been successfully used in WB:

Saravana Selvanathan and Jeffrey Toretsky

An EWS::FLI1 monoclonal antibody with multimodal utility and specificity for FLI1.

bioRxiv preprint doi: <https://doi.org/10.1101/2023.11.13.566886>

PMID: 0



EB09297 (1 μ g/ml) staining of nuclear HeLa lysate (35 μ g protein in RIPA buffer). Detected by chemiluminescence.