



UK Office

Everest Biotech Ltd

Cherwell Innovation Centre
77 Heyford Park
Upper Heyford
Oxfordshire
OX25 5HD
UK

Enquiries:

info@everestbiotech.com

Sales:

sales@everestbiotech.com

Tech support:

support@everestbiotech.com

Tel: +44 (0)1869 238326

Fax: +44 (0)1869 238327

US Office

Everest Biotech c/o Abcore

405 Maple Street, Suite A106
Ramona,
CA 92065
USA

Inquiries:

info@everestbiotech.com

Sales:

usasales@everestbiotech.com

Tech support:

support@everestbiotech.com

Tel: 888-320-4628 (toll-free)

Fax: 888-841-9041

www.everestbiotech.com

**Research Use Only. Not for
diagnostic or therapeutic use.**

EB08971 - Goat Anti-DIAPH1 Antibody

Size: 100µg specific antibody in 200µl



Target Protein

Principal Names: DIAPH1, diaphanous homolog 1 (Drosophila), DFNA1, DIA1, DRF1, FLJ25265, LFHL1, hDIA1, diaphanous 1, diaphanous-1, diaphanous-related formin 1

Official Symbol: DIAPH1

Accession Number(s): NP_005210.3; NP_001073280.1

Human GeneID(s): [1729](#)

Non-Human GeneID(s): 13367 (mouse)

Important Comments: This antibody is expected to recognize both reported isoforms (NP_005210.3; NP_001073280.1).

Immunogen

Peptide with sequence C-QTKTSKAKKDQ, from the internal region of the protein sequence according to NP_005210.3; NP_001073280.1.

Please note the [peptide](#) is available for sale.

Purification and Storage

Purified from goat serum by ammonium sulphate precipitation followed by antigen affinity chromatography using the immunizing peptide.

Supplied at 0.5 mg/ml in Tris saline, 0.02% sodium azide, pH7.3 with 0.5% bovine serum albumin.

Aliquot and store at -20°C. Minimize freezing and thawing.

Applications Tested

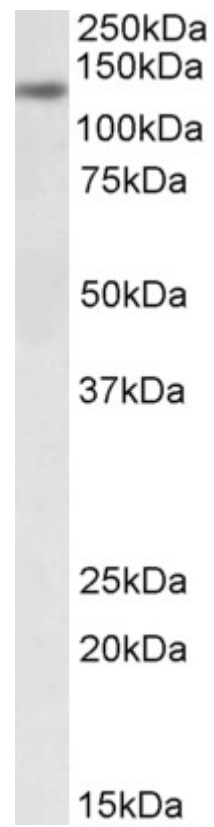
Peptide ELISA: antibody detection limit dilution 1:32000.

Western blot: Approx 140kDa band observed in lysates of cell line NIH3T3 (calculated MW of 141kDa according to Human NP_005210.3 and 139kDa according to Mouse NP_031884.1). Recommended concentration: 0.3-1µg/ml.

Species Reactivity

Tested: Mouse

Expected from sequence similarity: Human, Mouse



EB08971 (0.3 μ g/ml) staining of NIH3T3 lysate (35 μ g protein in RIPA buffer). Primary incubation was 1 hour.
Detected by chemiluminescence.