



Everest Biotech Ltd
Cherwell Innovation Centre
77 Heyford Park
Upper Heyford
Oxfordshire
OX25 5HD, United Kingdom

everestbiotech.com

sales@everestbiotech.com

support@everestbiotech.com

Tel +44 1869 238326

Fax +44 1869 238327

**Research Use Only. Not for
diagnostic or therapeutic use.**

Storage: For long-term storage
keep aliquots at -20°C. (Store no
longer than 12 months at 4°C).
Minimize freezing and thawing.

EB07703 - Goat Anti-DKC1 Antibody

Size: 100µg specific antibody in 200µl



Target Protein

Principal Names: XAP101, NOLA4, NAP57, DKC, dyskeratosis congenita 1, dyskerin, DKC1

Official Symbol: DKC1

Accession Number(s): NP_001354.1

Human GeneID(s): [1736](#)

Non-Human GeneID(s): 245474 (mouse)

Immunogen

Peptide with sequence C-KRKRESESESDETPP, from the internal region of the protein sequence according to NP_001354.1.

Please note the [peptide](#) is available for sale.

Purification and Storage

Purified from goat serum by ammonium sulphate precipitation followed by antigen affinity chromatography using the immunizing peptide.

Supplied at 0.5 mg/ml in Tris saline, 0.02% sodium azide, pH7.3 with 0.5% bovine serum albumin.

Aliquot and store at -20°C. Minimize freezing and thawing.

Applications Tested

Peptide ELISA: antibody detection limit dilution 1:128000.

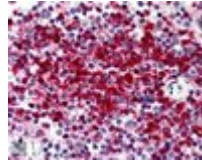
Western blot: Preliminary experiments gave an approx 70-75kDa band in Human Bone Marrow, Duodenum and Skin lysates after 0.01µg/ml antibody staining. Please note that currently we cannot find an explanation in the literature for the band we observe given the calculated size of 57.7kDa according to NP_001354.1. The 70-75kDa band was successfully blocked by incubation with the immunizing peptide. We would appreciate any feedback from people in the field - have any results been reported with other antibodies/lysates? Have any further splice variants/modified forms been reported?

IHC: In paraffin embedded Human Spleen shows strong nuclear staining of select splenocytes. Recommended concentration, 5-10µg/ml.

Species Reactivity

Tested: Human

Expected from sequence similarity: Human, Mouse



EB07703 (5µg/ml) staining of paraffin embedded Human Spleen. Steamed antigen retrieval with citrate buffer pH 6, AP-staining.