



## UK Office

### Everest Biotech Ltd

Cherwell Innovation Centre  
77 Heyford Park  
Upper Heyford  
Oxfordshire  
OX25 5HD  
UK

Enquiries:

[info@everestbiotech.com](mailto:info@everestbiotech.com)

Sales:

[sales@everestbiotech.com](mailto:sales@everestbiotech.com)

Tech support:

[support@everestbiotech.com](mailto:support@everestbiotech.com)

Tel: +44 (0)1869 238326

Fax: +44 (0)1869 238327

## US Office

### Everest Biotech c/o Abcore

405 Maple Street, Suite A106  
Ramona,  
CA 92065  
USA

Inquiries:

[info@everestbiotech.com](mailto:info@everestbiotech.com)

Sales:

[usasales@everestbiotech.com](mailto:usasales@everestbiotech.com)

Tech support:

[support@everestbiotech.com](mailto:support@everestbiotech.com)

Tel: 888-320-4628 (toll-free)

Fax: 888-841-9041

[www.everestbiotech.com](http://www.everestbiotech.com)

**Research Use Only. Not for  
diagnostic or therapeutic use.**

## EB05361 - Goat Anti-DKK3 / REIC Antibody

Size: 100µg specific antibody in 200µl



### Target Protein

**Principal Names:** DKK3, REIC, dickkopf homolog 3 (Xenopus laevis), DKK-3, RIG-like 5-6, RIG-like 7-1, dickkopf 3, Dickkopf gene 3, dickkopf (Xenopus laevis) homolog 3, dickkopf homolog 3, RIG, regulated in glioma

**Official Symbol:** DKK3

**Accession Number(s):** NP\_037385.2; NP\_056965.3; NP\_001018067.1

**Human GeneID(s):** [27122](#)

**Important Comments:** NP\_037385.2; NP\_056965.3 and NP\_001018067.1 are variants of the same protein.

### Immunogen

Peptide with sequence C-AAAALLGGEEI, from the C Terminus of the protein sequence according to NP\_037385.2; NP\_056965.3; NP\_001018067.1.

Please note the [peptide](#) is available for sale.

### Purification and Storage

Purified from goat serum by ammonium sulphate precipitation followed by antigen affinity chromatography using the immunizing peptide.

Supplied at 0.5 mg/ml in Tris saline, 0.02% sodium azide, pH7.3 with 0.5% bovine serum albumin.

Aliquot and store at -20°C. Minimize freezing and thawing.

### Applications Tested

**Peptide ELISA:** antibody detection limit dilution 1:16000.

**Western blot:** Approx 38kDa band observed in Human Brain (Cerebellum) lysates (calculated MW of 38.4kDa according to NP\_037385.2). Recommended concentration: 1-3µg/ml. Primary incubation 1 hour at room temperature.

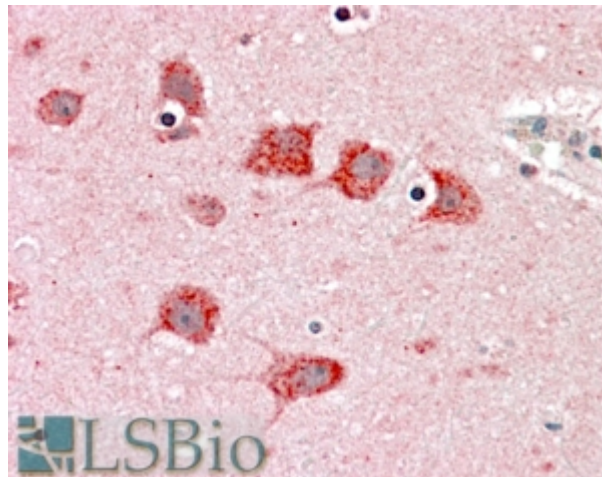
### Species Reactivity

**Tested:** Human

**Expected from sequence similarity:** Human



EB05361 staining (2µg/ml) of Human Cerebellum lysate (RIPA buffer, 35µg total protein per lane). Detected by chemiluminescence.



EB05361 (5µg/ml) staining of paraffin embedded Human Cortex. Steamed antigen retrieval with citrate buffer pH 6, AP-staining. **This data is from a previous batch, not on sale.**