



UK Office

Everest Biotech Ltd

Cherwell Innovation Centre
77 Heyford Park
Upper Heyford
Oxfordshire
OX25 5HD
UK

Enquiries:

info@everestbiotech.com

Sales:

sales@everestbiotech.com

Tech support:

support@everestbiotech.com

Tel: +44 (0)1869 238326

Fax: +44 (0)1869 238327

US Office

Everest Biotech c/o Abcore

405 Maple Street, Suite A106
Ramona,
CA 92065
USA

Inquiries:

info@everestbiotech.com

Sales:

usasales@everestbiotech.com

Tech support:

support@everestbiotech.com

Tel: 888-320-4628 (toll-free)

Fax: 888-841-9041

www.everestbiotech.com

**Research Use Only. Not for
diagnostic or therapeutic use.**

EB06436 - Goat Anti-DLC1 (Isoforms 1 and 3) Antibody

Size: 100µg specific antibody in 200µl



Target Protein

Principal Names: DLC1, HP, ARHGAP7, STARD12, FLJ21120, p122-RhoGAP, deleted in liver cancer 1, Rho-GTPase-activating protein 7, START domain containing protein 12, StAR-related lipid transfer protein 12, StAR-related lipid transfer (START) domain containing 12, deleted in liver cancer 1 variant 2

Official Symbol: DLC1

Accession Number(s): NP_872584.2; NP_079043.3

Human GeneID(s): [10395](#)

Non-Human GeneID(s): 50768 (mouse)

Important Comments: This antibody is expected to recognise isoforms 1 and 3 (NP_872584.2 and NP_079043.3 resp) but NOT isoform 2 (NP_006085.2).

Immunogen

Peptide with sequence SVAIRKRSWEEHC, from the N Terminus of the protein sequence according to NP_872584.2; NP_079043.3.

Please note the [peptide](#) is available for sale.

Purification and Storage

Purified from goat serum by ammonium sulphate precipitation followed by antigen affinity chromatography using the immunizing peptide.

Supplied at 0.5 mg/ml in Tris saline, 0.02% sodium azide, pH7.3 with 0.5% bovine serum albumin.

Aliquot and store at -20°C. Minimize freezing and thawing.

Applications Tested

Peptide ELISA: antibody detection limit dilution 1:64000.

IHC: Paraffin embedded Mouse Adrenal Gland. Recommended concentration: 4µg/ml.

Immunofluorescence: Expression of the protein seen in the cytoplasm and nucleus of U251 and U2OS cells. Recommended concentration: 10µg/ml.

Species Reactivity

Tested: Human, Mouse

Expected from sequence similarity: Human, Mouse, Pig

Specific Reference

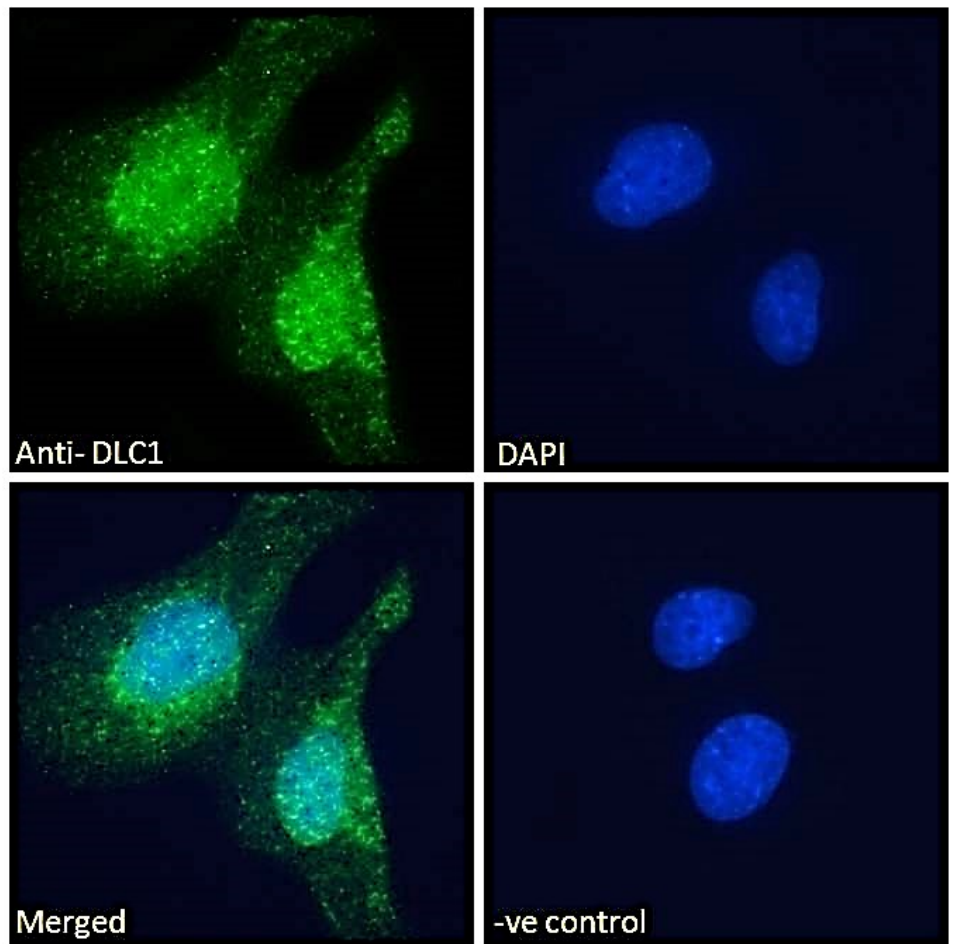
This antibody (previous batch) has been successfully used in WB in Human:

Ko FC, Yeung YS, Wong CM, Chan LK, Poon RT, Ng IO, Yam JW.

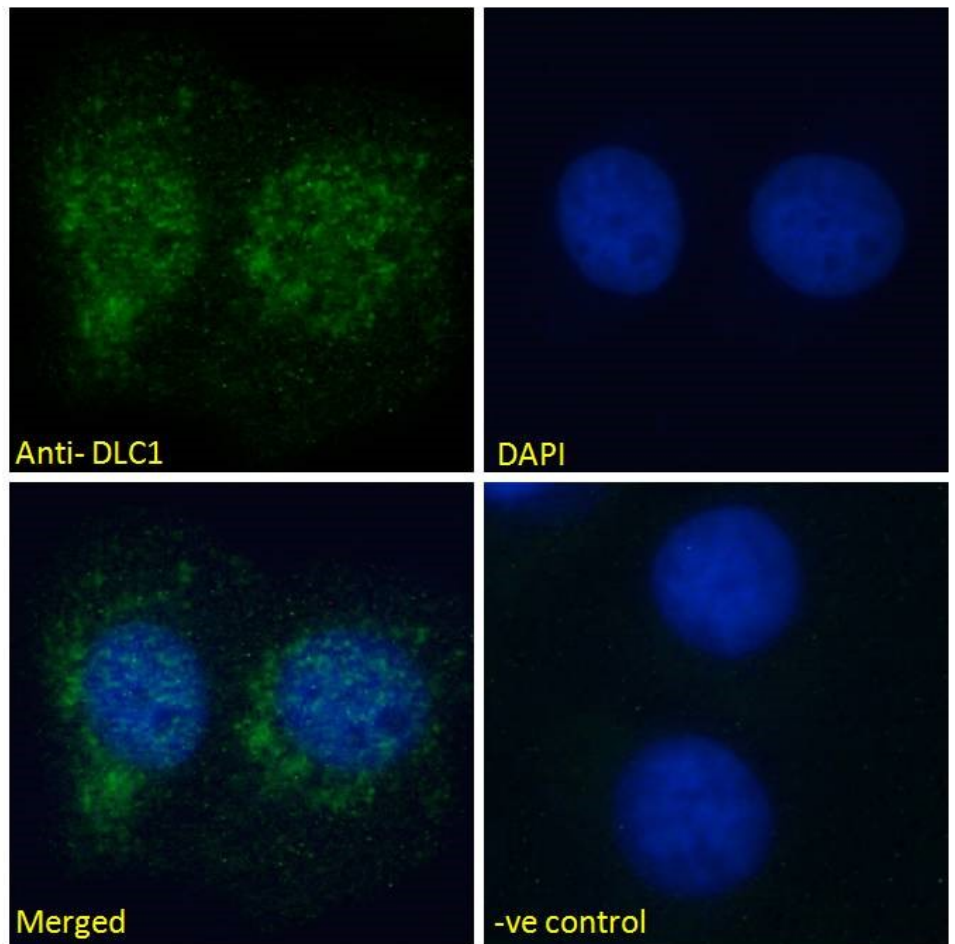
Deleted in liver cancer 1 isoforms are distinctly expressed in human tissues, functionally different and under differential transcriptional regulation in hepatocellular carcinoma.

Liver Int. 2010 Jan;30(1):139-48.

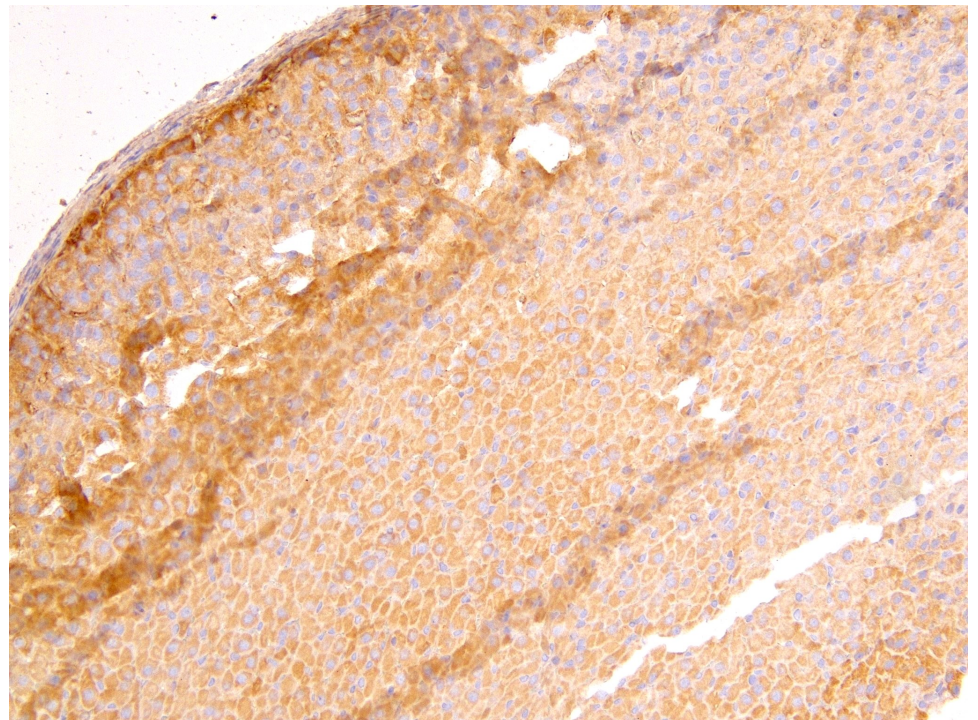
PMID: 19874489



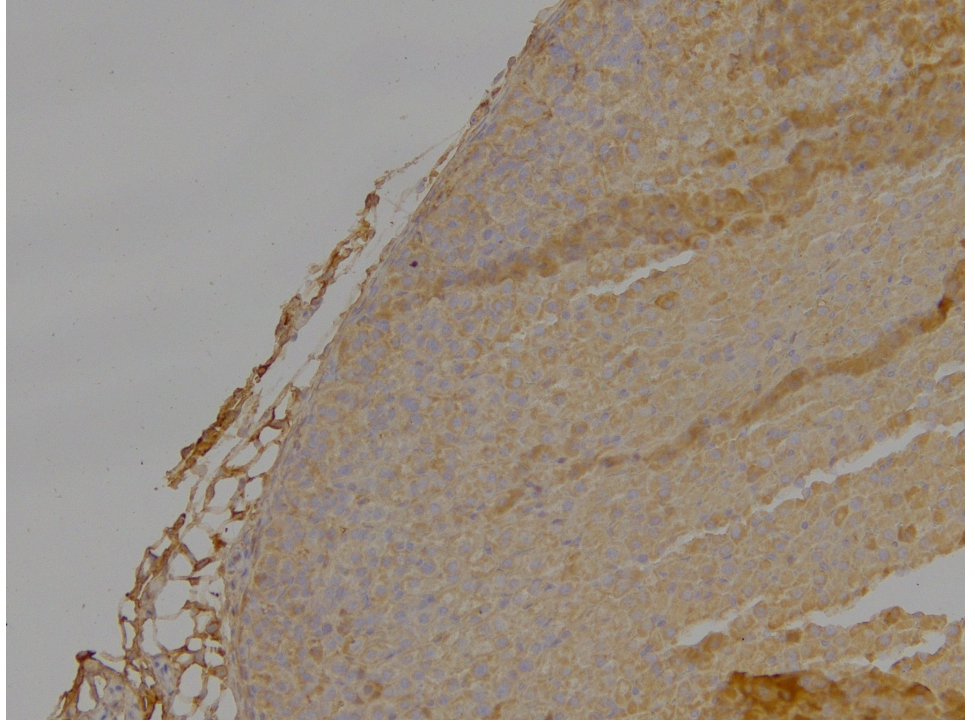
EB06436 Immunofluorescence analysis of paraformaldehyde fixed U251 cells, permeabilized with 0.15% Triton. Primary incubation 1hr (10ug/ml) followed by Alexa Fluor 488 secondary antibody (2ug/ml), showing nuclear and vesicle staining. The nuclear stain is DAPI (blue). Negative control: Unimmunized goat IgG (10ug/ml) followed by Alexa Fluor 488 secondary antibody (2ug/ml).



EB06436 Immunofluorescence analysis of paraformaldehyde fixed U2OS cells, permeabilized with 0.15% Triton. Primary incubation 1hr (10ug/ml) followed by Alexa Fluor 488 secondary antibody (2ug/ml), showing nuclear and cytoplasmic staining. The nuclear stain is DAPI (blue). Negative control: Unimmunized goat IgG (10ug/ml) followed by Alexa Fluor 488 secondary antibody (2ug/ml).



EB06436 (4µg/ml) staining of paraffin embedded Mouse Adrenal Gland. Heat induced antigen retrieval with citrate buffer pH 6, HRP-staining.



EB06436 Negative Control showing staining of paraffin embedded Mouse Adrenal Gland, with no primary antibody.