

UK Office

Everest Biotech Ltd

Cherwell Innovation Centre
77 Heyford Park
Upper Heyford
Oxfordshire
OX25 5HD
UK

Enquiries:

info@everestbiotech.com

Sales:

sales@everestbiotech.com

Tech support:

support@everestbiotech.com

Tel: +44 (0)1869 238326

www.everestbiotech.com

**Research Use Only. Not for
diagnostic or therapeutic use.**

EB08001 - Goat Anti-DLG1 Antibody

Size: 100µg specific antibody in 200µl



Target Protein

Principal Names: DLG1, discs, large homolog 1 (Drosophila), DKFZp761P0818, DKFZp781B0426, DLGH1, SAP97, dJ1061C18.1.1, hdlg, discs large homolog 1, discs, large homolog 1, presynaptic protein SAP97, synapse-associated protein 97

Official Symbol: DLG1

Accession Number(s): NP_001091894.1; NP_004078.2; NP_001191316.1; NP_001191317.1; NP_001353132.1; NP_001353133.1; NP_001353140.1; NP_001353145.1; NP_001353150.1; NP_001353151.1

Human GeneID(s): [1739](#)

Immunogen

Peptide with sequence C-NSKTRDKGEIPDD, from the internal region of the protein sequence according to NP_001091894.1; NP_004078.2; NP_001191316.1; NP_001191317.1; NP_001353132.1; NP_001353133.1; NP_001353140.1; NP_001353145.1; NP_001353150.1; NP_001353151.1.

Please note the [peptide](#) is available for sale.

Purification and Storage

Purified from goat serum by ammonium sulphate precipitation followed by antigen affinity chromatography using the immunizing peptide.

Supplied at 0.5 mg/ml in Tris saline, 0.02% sodium azide, pH7.3 with 0.5% bovine serum albumin.

Aliquot and store at -20°C. Minimize freezing and thawing.

Applications Tested

Peptide ELISA: antibody detection limit dilution 1:16000.

Western blot: Preliminary testing showed a band at approx 150kDa in lysate of cell line Kelly after 0.3µg/ml antibody staining (calculated MW of 103kDa according to NP_004078.2). This molecular weight is observed by other sources. Primary incubation 1 hour at room temperature.

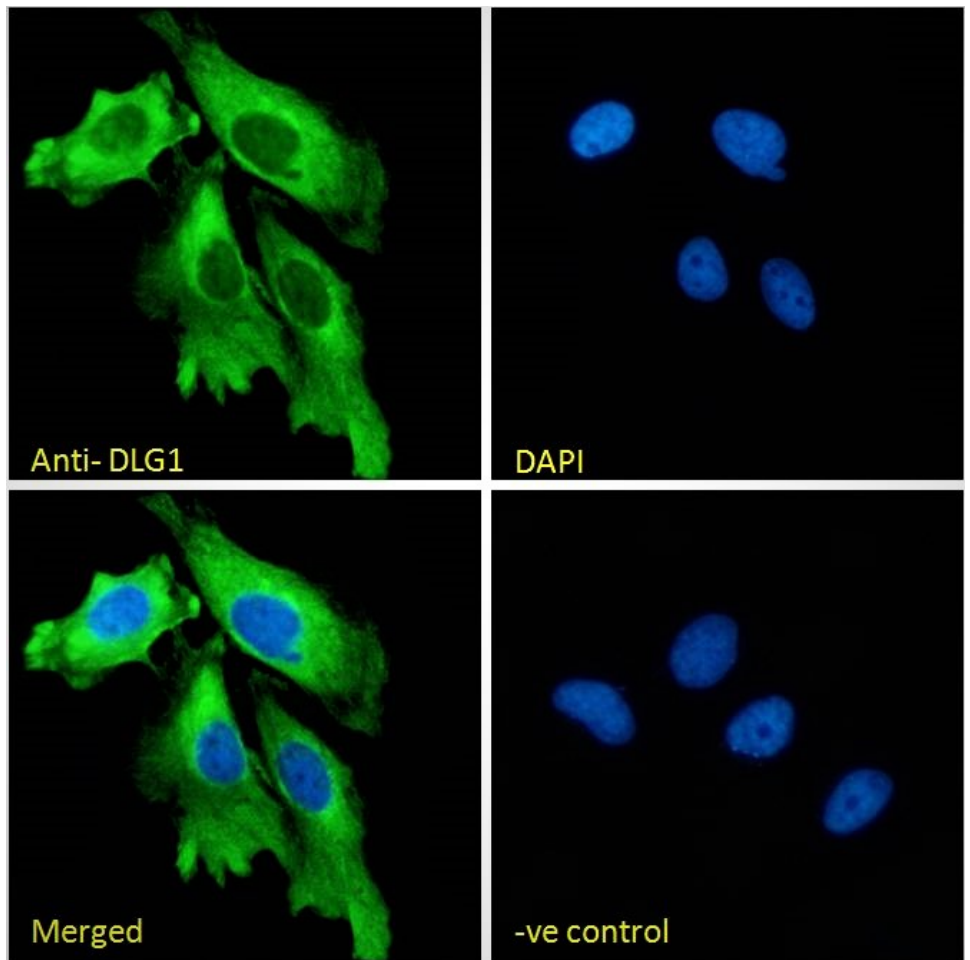
Immunofluorescence: Strong expression of the protein seen in the cytoplasm and ER of HeLa and U2OS cells. Recommended concentration: 10µg/ml.

Flow Cytometry: Flow cytometric analysis of HeLa cells. Recommended concentration: 10ug/ml.

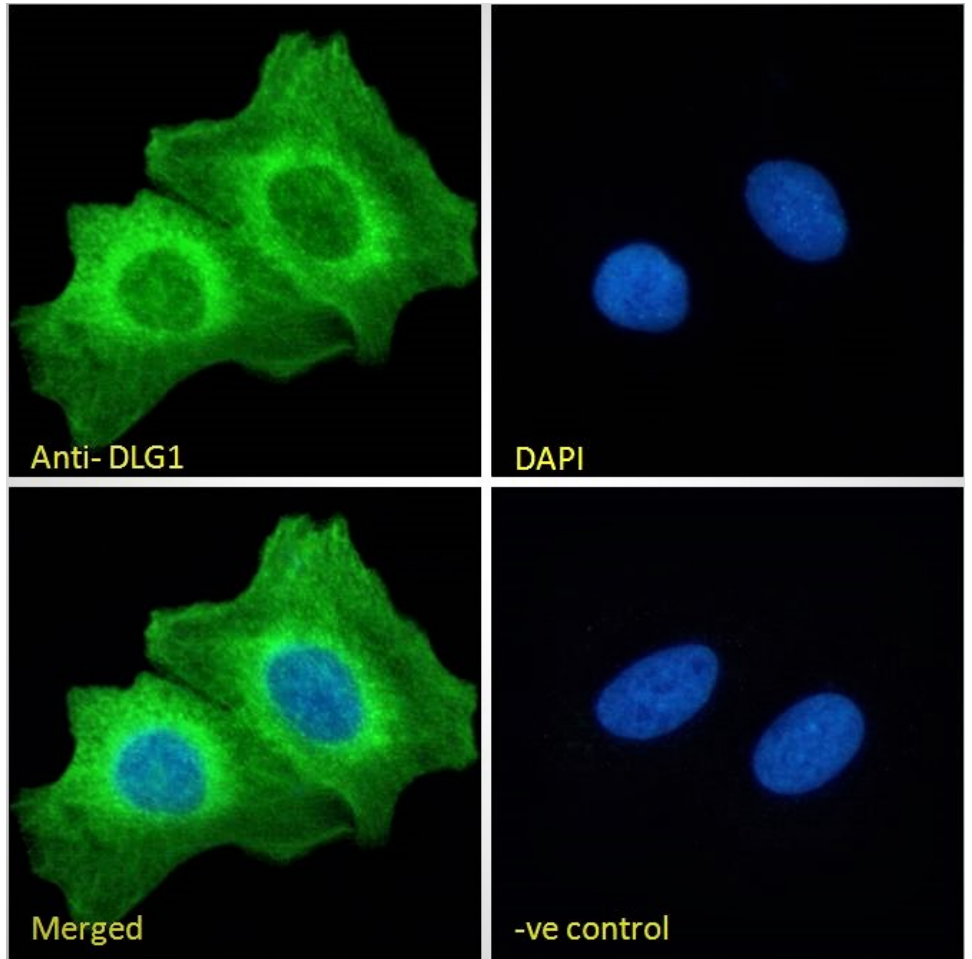
Species Reactivity

Tested: Human

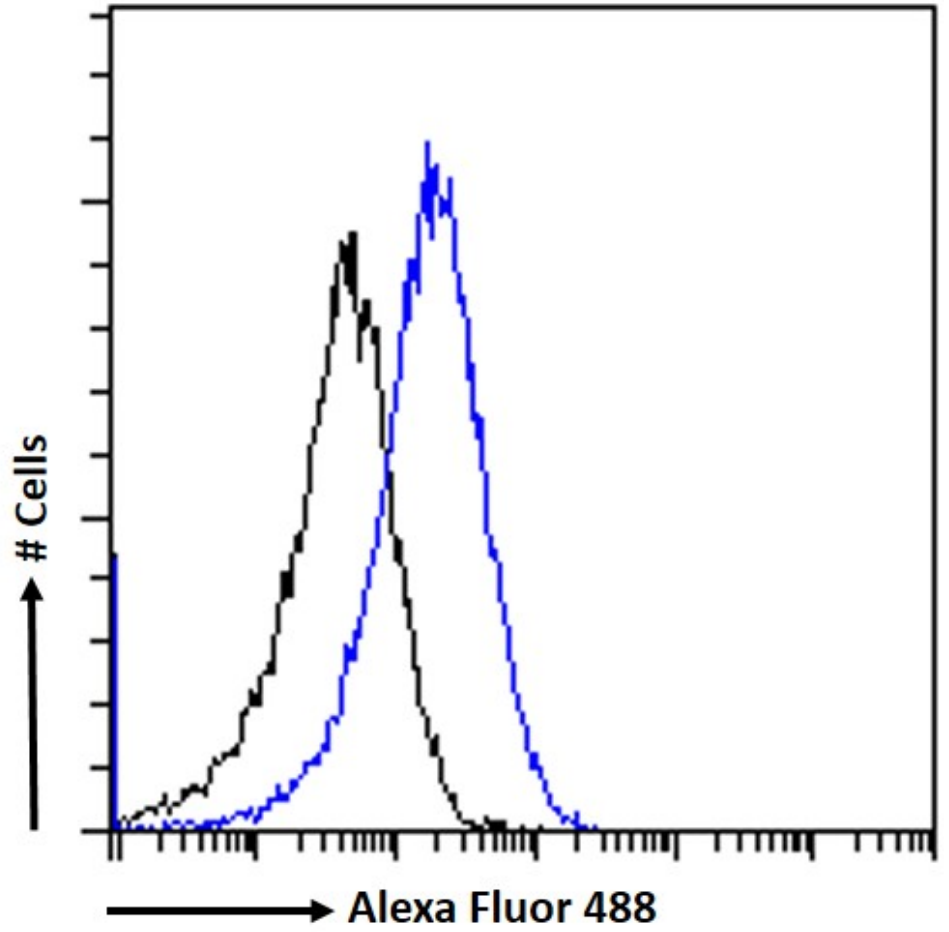
Expected from sequence similarity: Human, Mouse, Rat



EB08001 Immunofluorescence analysis of paraformaldehyde fixed HeLa cells, permeabilized with 0.15% Triton. Primary incubation 1hr (10ug/ml) followed by Alexa Fluor 488 secondary antibody (2ug/ml), showing ER and cytoplasmic staining. The nuclear stain is DAPI (blue). Negative control: Unimmunized goat IgG (10ug/ml) followed by Alexa Fluor 488 secondary antibody (2ug/ml).



EB08001 Immunofluorescence analysis of paraformaldehyde fixed U2OS cells, permeabilized with 0.15% Triton. Primary incubation 1hr (10ug/ml) followed by Alexa Fluor 488 secondary antibody (2ug/ml), showing ER and cytoplasmic staining. The nuclear stain is DAPI (blue). Negative control: Unimmunized goat IgG (10ug/ml) followed by Alexa Fluor 488 secondary antibody (2ug/ml).



EB08001 Flow cytometric analysis of paraformaldehyde fixed HeLa cells (blue line), permeabilized with 0.5% Triton. Primary incubation 1hr (10ug/ml) followed by Alexa Fluor 488 secondary antibody (1ug/ml). IgG control: Unimmunized goat IgG (black line) followed by Alexa Fluor 488 secondary antibody.