



## UK Office

### Everest Biotech Ltd

Cherwell Innovation Centre  
77 Heyford Park  
Upper Heyford  
Oxfordshire  
OX25 5HD  
UK

Enquiries:

[info@everestbiotech.com](mailto:info@everestbiotech.com)

Sales:

[sales@everestbiotech.com](mailto:sales@everestbiotech.com)

Tech support:

[support@everestbiotech.com](mailto:support@everestbiotech.com)

Tel: +44 (0)1869 238326

Fax: +44 (0)1869 238327

## US Office

### Everest Biotech c/o Abcore

405 Maple Street, Suite A106  
Ramona,  
CA 92065  
USA

Inquiries:

[info@everestbiotech.com](mailto:info@everestbiotech.com)

Sales:

[usasales@everestbiotech.com](mailto:usasales@everestbiotech.com)

Tech support:

[support@everestbiotech.com](mailto:support@everestbiotech.com)

Tel: 888-320-4628 (toll-free)

Fax: 888-841-9041

[www.everestbiotech.com](http://www.everestbiotech.com)

**Research Use Only. Not for  
diagnostic or therapeutic use.**

## EB08001 - Goat Anti-DLG1 Antibody

Size: 100µg specific antibody in 200µl



### Target Protein

**Principal Names:** DLG1, discs, large homolog 1 (Drosophila), DKFZp761P0818, DKFZp781B0426, DLGH1, SAP97, dJ1061C18.1.1, hdlg, discs large homolog 1, discs, large homolog 1, presynaptic protein SAP97, synapse-associated protein 97

**Official Symbol:** DLG1

**Accession Number(s):** NP\_001091894.1; NP\_004078.2; NP\_001191316.1; NP\_001191317.1; NP\_001353132.1; NP\_001353133.1; NP\_001353140.1; NP\_001353145.1; NP\_001353150.1; NP\_001353151.1

**Human GeneID(s):** [1739](#)

### Immunogen

Peptide with sequence C-NSKTRDKGEIPDD, from the internal region of the protein sequence according to NP\_001091894.1; NP\_004078.2; NP\_001191316.1; NP\_001191317.1; NP\_001353132.1; NP\_001353133.1; NP\_001353140.1; NP\_001353145.1; NP\_001353150.1; NP\_001353151.1.

Please note the [peptide](#) is available for sale.

### Purification and Storage

Purified from goat serum by ammonium sulphate precipitation followed by antigen affinity chromatography using the immunizing peptide.

Supplied at 0.5 mg/ml in Tris saline, 0.02% sodium azide, pH7.3 with 0.5% bovine serum albumin.

Aliquot and store at -20°C. Minimize freezing and thawing.

### Applications Tested

**Peptide ELISA:** antibody detection limit dilution 1:16000.

**Western blot:** Preliminary testing showed a band at approx 150kDa in lysate of cell line Kelly after 0.3µg/ml antibody staining (calculated MW of 103kDa according to NP\_004078.2). This molecular weight is observed by other sources. Primary incubation 1 hour at room temperature.

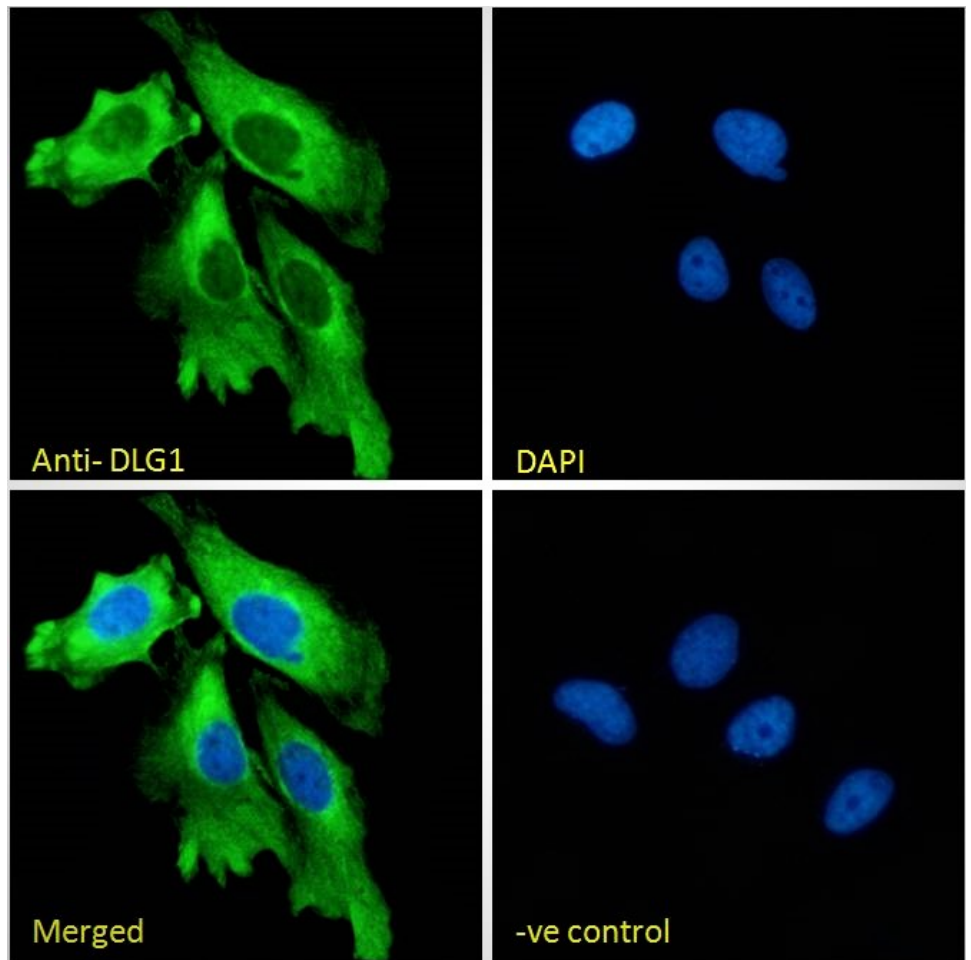
**Immunofluorescence:** Strong expression of the protein seen in the cytoplasm and ER of HeLa and U2OS cells. Recommended concentration: 10µg/ml.

**Flow Cytometry:** Flow cytometric analysis of HeLa cells. Recommended concentration: 10ug/ml.

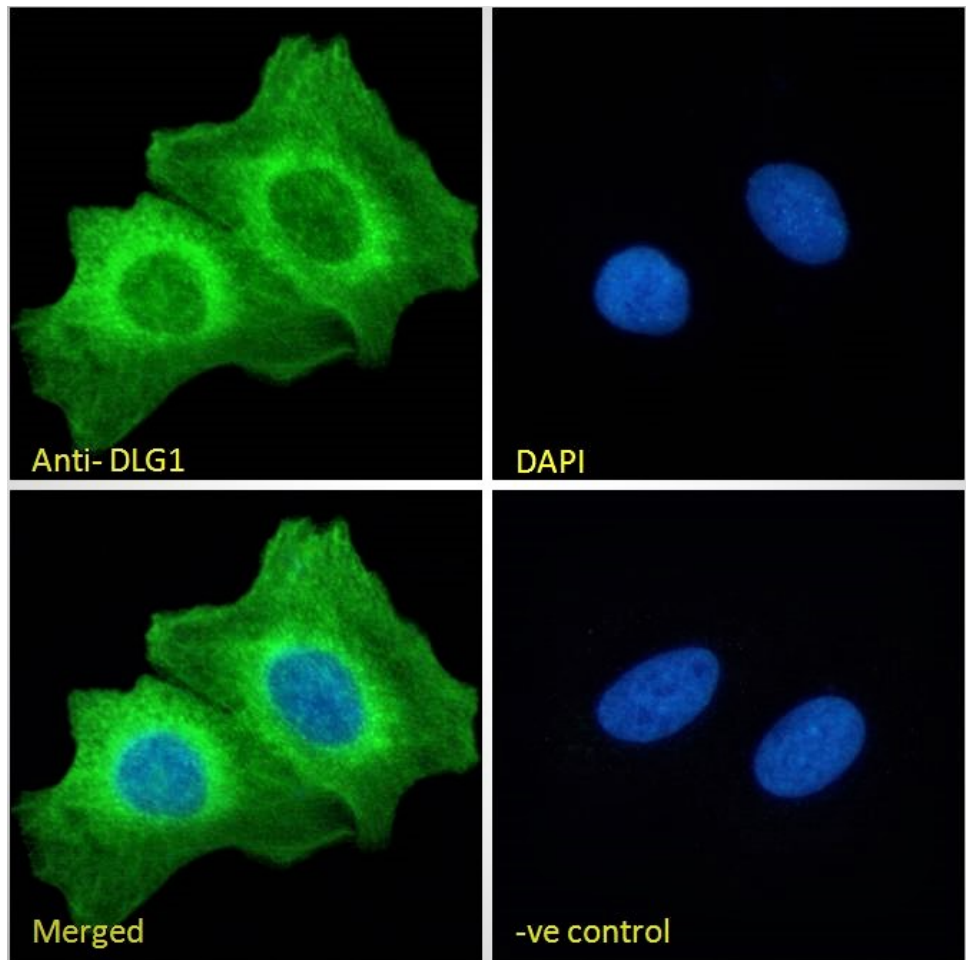
### Species Reactivity

**Tested:** Human

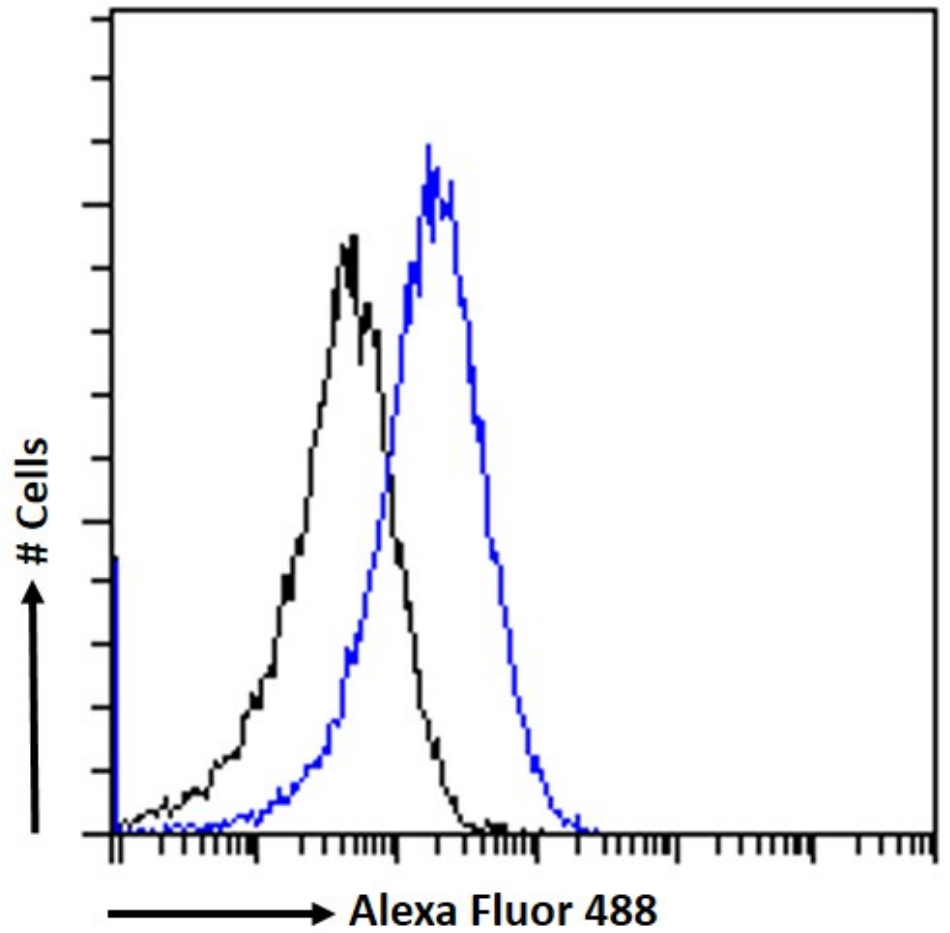
**Expected from sequence similarity:** Human, Mouse, Rat



EB08001 Immunofluorescence analysis of paraformaldehyde fixed HeLa cells, permeabilized with 0.15% Triton. Primary incubation 1hr (10ug/ml) followed by Alexa Fluor 488 secondary antibody (2ug/ml), showing ER and cytoplasmic staining. The nuclear stain is DAPI (blue). Negative control: Unimmunized goat IgG (10ug/ml) followed by Alexa Fluor 488 secondary antibody (2ug/ml).



EB08001 Immunofluorescence analysis of paraformaldehyde fixed U2OS cells, permeabilized with 0.15% Triton. Primary incubation 1hr (10ug/ml) followed by Alexa Fluor 488 secondary antibody (2ug/ml), showing ER and cytoplasmic staining. The nuclear stain is DAPI (blue). Negative control: Unimmunized goat IgG (10ug/ml) followed by Alexa Fluor 488 secondary antibody (2ug/ml).



EB08001 Flow cytometric analysis of paraformaldehyde fixed HeLa cells (blue line), permeabilized with 0.5% Triton. Primary incubation 1hr (10ug/ml) followed by Alexa Fluor 488 secondary antibody (1ug/ml). IgG control: Unimmunized goat IgG (black line) followed by Alexa Fluor 488 secondary antibody.