



UK Office

Everest Biotech Ltd

Cherwell Innovation Centre
77 Heyford Park
Upper Heyford
Oxfordshire
OX25 5HD
UK

Enquiries:

info@everestbiotech.com

Sales:

sales@everestbiotech.com

Tech support:

support@everestbiotech.com

Tel: +44 (0)1869 238326

Fax: +44 (0)1869 238327

US Office

Everest Biotech c/o Abcore

405 Maple Street, Suite A106
Ramona,
CA 92065
USA

Inquiries:

info@everestbiotech.com

Sales:

usasales@everestbiotech.com

Tech support:

support@everestbiotech.com

Tel: 888-320-4628 (toll-free)

Fax: 888-841-9041

www.everestbiotech.com

**Research Use Only. Not for
diagnostic or therapeutic use.**

EB09285 - Goat Anti-DLL1 Antibody

Size: 100µg specific antibody in 200µl



Target Protein

Principal Names: DLL1, delta-like 1 (Drosophila), DELTA1, DL1, Delta, OTTHUMP00000017690, delta (Drosophila)-like 1, delta-like 1, delta-like 1 protein

Official Symbol: DLL1

Accession Number(s): NP_005609.3

Human GenelD(s): [28514](#)

Non-Human GenelD(s): 13388 (mouse), 84010 (rat)

Immunogen

Peptide with sequence C-ATQRHLTVGEEWSQD, from the internal region of the protein sequence according to NP_005609.3.

Please note the [peptide](#) is available for sale.

Purification and Storage

Purified from goat serum by ammonium sulphate precipitation followed by antigen affinity chromatography using the immunizing peptide.

Supplied at 0.5 mg/ml in Tris saline, 0.02% sodium azide, pH7.3 with 0.5% bovine serum albumin.

Aliquot and store at -20°C. Minimize freezing and thawing.

Applications Tested

Peptide ELISA: antibody detection limit dilution 1:16000.

Western blot: Approx 75kDa band observed in Mouse Heart and Rat Pancreas lysates (calculated MW of 78.5kDa according to Mouse NP_031891.2 and 77.4kDa according to Rat NP_114452.1). An additional band of unknown identity was also consistently observed at 25kDa. This band was successfully blocked by incubation with the immunizing peptide. Recommended concentration: 0.3-7µg/ml. Primary incubation 1 hour at room temperature.

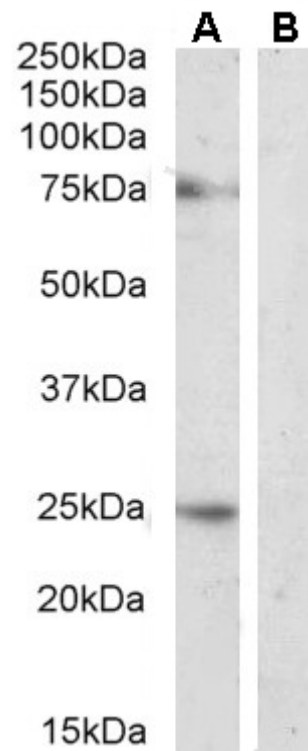
Immunofluorescence: Strong expression of the protein seen in the cytoplasm/membranes of HeLa cells. Recommended concentration: 10µg/ml.

Flow Cytometry: Flow cytometric analysis of HeLa cells. Recommended concentration: 10ug/ml.

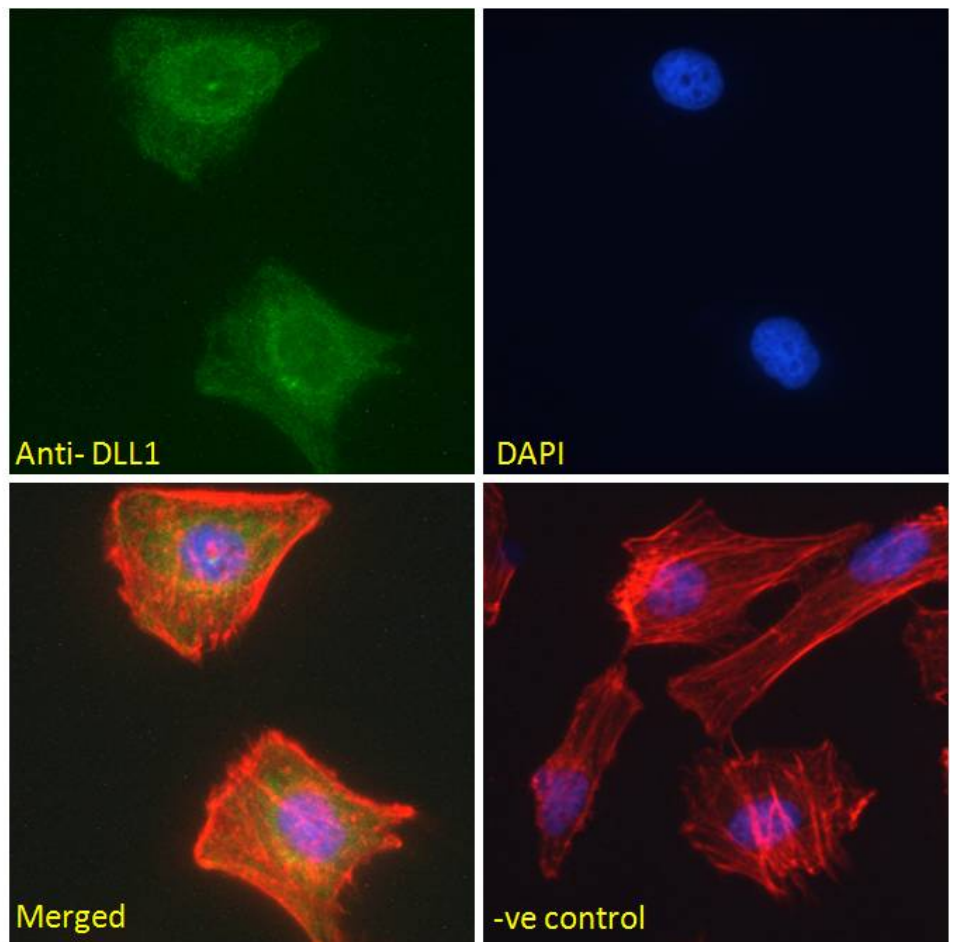
Species Reactivity

Tested: Human, Rat

Expected from sequence similarity: Human, Mouse, Rat

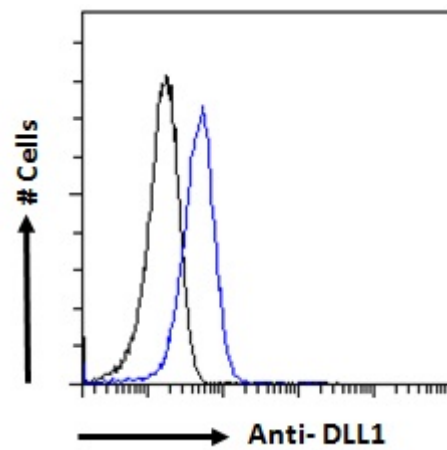


EB09285 (2µg/ml) staining of Rat Pancreas lysate (A) + Peptide (B) (35µg protein in RIPA buffer). Detected by chemiluminescence.



EB09285 Immunofluorescence analysis of paraformaldehyde fixed HeLa cells, permeabilized with 0.15% Triton. Primary incubation 1hr (10ug/ml) followed by Alexa Fluor 488 secondary antibody (2ug/ml), showing

cytoplasmic/membrane staining. Actin filaments were stained with phalloidin (red) and the nuclear stain is DAPI (blue). Negative control: Unimmunized goat IgG (10ug/ml) followed by Alexa Fluor 488 secondary antibody (2ug/ml).



EB09285 Flow cytometric analysis of paraformaldehyde fixed HeLa cells (blue line), permeabilized with 0.5% Triton. Primary incubation 1hr (10ug/ml) followed by Alexa Fluor 488 secondary antibody (1ug/ml). IgG control: Unimmunized goat IgG (black line) followed by Alexa Fluor 488 secondary antibody.