



## UK Office

### Everest Biotech Ltd

Cherwell Innovation Centre  
77 Heyford Park  
Upper Heyford  
Oxfordshire  
OX25 5HD  
UK

Enquiries:

[info@everestbiotech.com](mailto:info@everestbiotech.com)

Sales:

[sales@everestbiotech.com](mailto:sales@everestbiotech.com)

Tech support:

[support@everestbiotech.com](mailto:support@everestbiotech.com)

Tel: +44 (0)1869 238326

[www.everestbiotech.com](http://www.everestbiotech.com)

**Research Use Only. Not for  
diagnostic or therapeutic use.**

## EB08011 - Goat Anti-DLL4 Antibody

Size: 100µg specific antibody in 200µl



### Target Protein

**Principal Names:** DLL4, delta-like 4 (Drosophila), MGC126344, hdelta2, delta 4, delta ligand 4, delta-like 4 homolog, delta-like 4 protein, notch ligand DLL4, notch ligand delta-2

**Official Symbol:** DLL4

**Accession Number(s):** NP\_061947.1

**Human GeneID(s):** [54567](#)

**Important Comments:** Notch signaling

### Immunogen

Peptide with sequence KNTNQKKELEVDC, from the internal region of the protein sequence according to NP\_061947.1.

Please note the [peptide](#) is available for sale.

### Purification and Storage

Purified from goat serum by ammonium sulphate precipitation followed by antigen affinity chromatography using the immunizing peptide.

Supplied at 0.5 mg/ml in Tris saline, 0.02% sodium azide, pH7.3 with 0.5% bovine serum albumin.

Aliquot and store at -20°C. Minimize freezing and thawing.

### Applications Tested

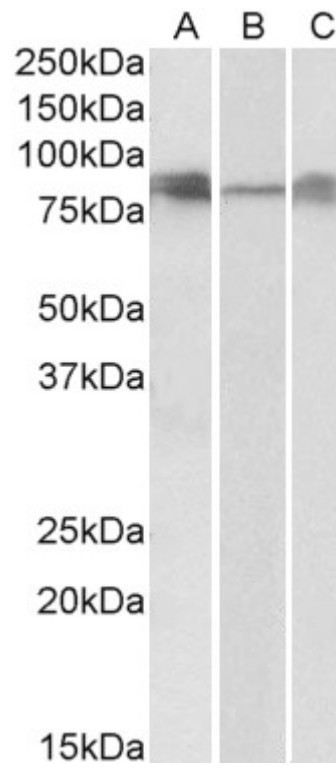
**Peptide ELISA:** antibody detection limit dilution 1:64000.

**Western blot:** Approx 80-85kDa bands observed in Human, Mouse and Rat Lung lysates (calculated MW of 74.6kDa according to NP\_061947.1). Recommended concentration: 0.3-1µg/ml. Primary incubation was 1 hour.

### Species Reactivity

**Tested:** Human, Mouse, Rat

**Expected from sequence similarity:** Human, Mouse, Rat



EB08011 (0.3 $\mu$ g/ml) staining of Human (A), Mouse (B) and Rat (C) Lung lysates (35 $\mu$ g protein in RIPA buffer).  
Detected by chemiluminescence